



# Custom Suit Measuring Guide Super Moto Suits

After verification of measurements, we guarantee the fit! (SM02)

## Quality... from Professionals... for Professionals!

Vanson Leathers understands professional racers. They depend on premium quality protective garments, fast knowledgeable service and styles and graphics to showcase the racer and his or her sponsors.

Vanson Custom Suits are made from top-grain U.S. cowhide approximately 3 1/2 oz. per square foot and 1.4-1.7 mm. We are constantly developing new features and experimenting with new materials. This ensures that we can offer the best product and service to professional riders. Vanson offers a complete "menu" of options and lettering styles to choose from, allowing you to design the suit you want.



### How to use this form

Select the **Style** of suit based on the standard features which meet your racing needs. For each **Style**, there is a list of available **Options**. These **Options** are available at an additional cost to the base price of the suit. Select the **Style** in Section 1 and **Options** in Section 2. Next, you can **Draw Your Own Design** in Section 5 or choose from the many standard **Graphic** designs in Section 4. Color selections can be made from Vanson's wide selection of drum-dyed colors.

Sample leather color swatches are available upon request. Remember, you can change colors at any seam line for **no extra charge!** To add a personalized touch to your custom suit, **Lettering and Logos** can be added from Section 3. **Note: Foils and Special Effects leather cost 15% more.**

Be sure to show the placement of any custom lettering in the spaces provided. Then, using the special **Vanson Measuring Device**, complete Section 6 to **Take Your Measurements**. Be sure to follow the directions carefully and fill out all the measurements in this section including the **Measurement Checks** to insure the accuracy of your measuring. In order to verify your measurements, it is **required** that you include your **Height, Weight, and Age**.

Finally, turn to the back page of the form and complete your order by filling out the **Shipping Information** and adding the cost from each section to determine the **Total Cost** of your suit.

### Index

	Page
Reasons to own a Vanson .....	1
Suit Tree .....	2
<b>Super Motard Suit Styles &amp; Options</b> .....	3 - 4
Draw or Attach Your Logo.....	5
Design Suggestions .....	6 - 7
Lettering & Numbers .....	8
Draw Your Own Design .....	9 - 10
Logos & Sponsor Patch Placement .....	11 - 12
Measurements .....	13 - 17
Order Form .....	18



# Vanson Racing Leathers

Welcome to our custom suit page. Racing has been a passion for us from the beginning. All of our suits are built to the needs of the racers. Since 1974 we have changed continuously and modernized the way we build our racing suits. All of our custom suits are built one at a time in the USA. When you buy a Vanson custom suit, you are

not just getting the best suit made, you are also getting dependability, reliability, repairability and guaranteed fit. It is this dedication to giving the racer the best suit possible that Vanson Leathers has proudly stood for these past 40 years. It is this dedication which results in suits that last for race after race, season after season, for men and for women.

## Top Ten reasons to Own A Vanson...

- #10 **Any size** – we will make to fit.
- #9 **Guaranteed fit** – once measurements have been approved by us, no questions asked. No worries -see our measurement video and pages - or call us, we can help you.
- #8 **Aftercare** – we will alter, repair and maintain Vanson Leathers whatever the age and condition so long as the finish product is deemed “safe” by us.
- #7 **Reconditioning service** – we will clean and bathe Vanson Leathers using the same ph balanced oils and waxes used in the original tanning and finishing of the leathers.
- #6 **Ownership registry** – all repairs, patterns and alterations are archived to enable us to repair and or reproduce each individual garment. We have tracked lost and stolen Vansons for their owners and the police.
- #5 **Made in the USA** – handmade with pride in our workshop in Fall River, Mass, USA. The Vanson team has over 40 years experience of making dreams come true. We make and finish our own leather. We make our own Aramid textile - which we call Powerstretch.
- #4 **Strength & protection** – race after race, year after year. Some of our oldest suits are still racing. Made from the strongest leathers, and the innovative and unique patented design features - such as the F.A.S. (Floating Armor System), Double Front Zipper racing suits, Powerstretch Aramid textile panels, RAM Air Sleeve vents, AirCurtain ventilation systems - Vanson continuously works to produce the best at the front of the pack. Take a look at Eric Guilbranson’s crash101 video on why and how the Vanson suits protect.
- #3 **Value** – Get Back Up and Get Going - our suits are NOT crash and replace. Mike Martire has over 60 crashes on his suit; Chris Hand got blown off his drag bike at 228 Mph. Dale Quarterly lost it at full speed on the Daytona High Banks when his Ducati transmission locked up - 165 Mph, 400 foot slide. Eric Wood at Homestead came off at 160Mph and ran back to the pits to relaunch on his backup bike.
- #2 **Express yourself** through the creation of a beautiful and unique suit. Any graphic - your design (we can help you) we will make it or look at our design pages for inspiration. Note: subject to design/construction limitations of the basic garment we are making for you.
- #1 **Pride of ownership** – when you get a handmade Vanson custom suit you are joining a very exclusive worldwide club. These suits are heirloom quality, and given basic proper care will give decades of service.



## The Proof is in the Patents

Buying a Vanson suit is purchasing a unique piece of leatherworking history. Over the years, as we have developed our own, unique way of producing a better quality garment we’ve come up with entirely new concepts for our riders. As these innovations have been discovered and perfected, they have been patented.

Currently Vanson holds over 10 unique patents. These cover everything from the way we set the zippers in our garments for our venting system to our Floating Armor System. Carefully designed for your comfort and safety when working with our superior materials, we always seek to innovate without sacrificing the longevity of our suits.



## Vanson Suit Tree:

	Custom	Off-the-Rack
<b>MK3 suits</b> <b>(with armor)</b> <i>Professional Road Racing, side car</i>	VO93 <i>double front zipper suit</i> VE93 VL93 V932 (#) ladies available	V09 (sizes 34-54)
<b>Drag Race</b> <i>Drag Racing, Dirt Track, Snowmobile Racing</i>	DR1 ladies available DR2 (#) DRL2 (2#)	Drag (#) (sizes 34-54)
<b>Super Motard</b> <b>(with armor)</b> <i>Super Motard Racing, Dirt Tracking, Vintage Road Racing</i>	SM02 ladies available SM22 (#) ladies available	1 piece only (sizes 34-54)
<b>Traditional</b> <b>(extra leather)</b> <i>Vintage Road Racing, Long Boarding, Dirt Tracking</i>	RR1 ladies available RR2 ladies available	
<b>MK2 suits</b> <b>with armor</b> <i>Road Racing, Dirt Tracking, Long Boarding, Side car Racing</i>	RR12 ladies available RR22(##) ladies available	
<b>Street &amp; Track</b> <i>Track Days</i>	STRC (#) ladies available	
<b>HYBRID - suit with Hump and CE F.A.S. armor*</b> <i>Professional Road Racing, Road Racing, Vintage Road Racing</i>		HYB1 (sizes 34 54)

(#) Designates 2 piece suits - all with full circumference waist zipper  
 \*Ready made Suits not available as a custom order. Call for more information.

### Unique Vanson Features

#### PROperf™ ventilation panels

The front panels of the suits are perforated for flow through ventilation. This feature combined with a perspiration wicking mesh lining [VO93 only] will help to keep you comfortable even on the hottest day.

#### POWERSTRETCH™ Stretch Panels - is a VANSON™

Powerstretch™ panels allow a snug fit with excellent ease of movement. Powerstretch™ has an extremely high tensile strength. This combined with a stretch material results in comfort and strength where you need it most.

#### F.A.S.™ Body Armor (Patented)

Body Armor is an essential part of a modern racing suit. We at Vanson have developed the Floating Armor System (F.A.S.). This system features a moveable sandwich of materials to dissipate and absorb impact energy while allowing a greater range of movement and comfort. All the armor pieces are attached with Velcro® to the outer shell from within utilizing an elastic suspension and are adjustable for maximum comfort and



protection yet removable for repairs. The energy absorbing sandwich has outer and inner components. The outer component is the leather outer shell, a layer of closed cell foam, and an inside leather patch.

The inner component is another sandwich of hard armor and soft foam attached with Velcro® and/or elastic to the outer component. This is designed to “float” between your body and the outer leather shell. This system allows the outer shell of the suit and your body to move independently of one another without losing the protection of the armor.

F.A.S. protected areas are: shoulder, elbow/forearm, knees and an articulated back pad. **\*Smaller size suits can not accept HARD (GP) armor. CE approved armor will be substituted.** **Double-Zipper Front** (Patented VO93 only) for ease of entry and a smooth aerodynamic fit. Side alignment of zippers allows for tighter tuck on bike, and eliminates “bunching” for a better fit.

#### Zip-Free Washable Lining

No more stinky leathers! Now you can unzip the mesh lining at the arms, legs and along the torso for partial removal to wash and dry (lining remains attached at ankle and cuffs).

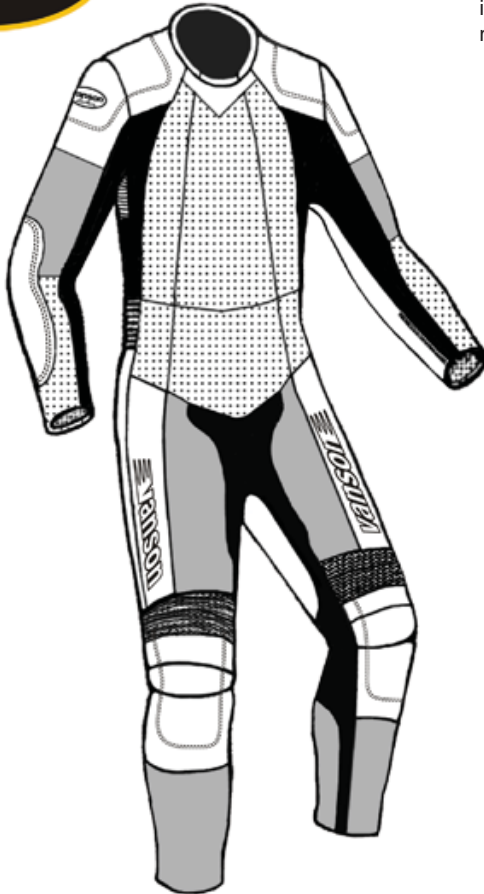


# Custom Suit Measuring Guide Super Moto Suits

After verification of measurements, we guarantee the fit! (SM02)

1

SM02



## SM02 Standard Features

### PROper™ Ventilation Panels

The front panels of the suits are perforated for flow through ventilation. This feature combined with a perspiration wicking mesh lining will help to keep you comfortable even on the hottest day.

**Powerstretch™ Panels-POWERSTRECH is a VANSON™** Powerstretch™ panels allow a snug fit with excellent ease of movement. Powerstretch™ has an extremely high tensile strength. This combined with a stretch material results in comfort and strength where you need it most.

**Double-Zipper Front** (Patented) for ease of entry and a smooth aerodynamic fit. Side alignment of zippers allows for tighter tuck on bike, and eliminates “bunching” for a better fit.

### Zip-Free Washable Lining

No more stinky leathers! Now you can unzip the mesh lining at the arms, legs and along the torso for partial removal to wash and dry (lining remains attached at ankle and cuffs).

**CE Approved** Vantech armor-shoulders, elbow/forearms, knee, hips and backpad.

## MEN'S SMO2 ONE PIECE Moto SUIT \$1,195

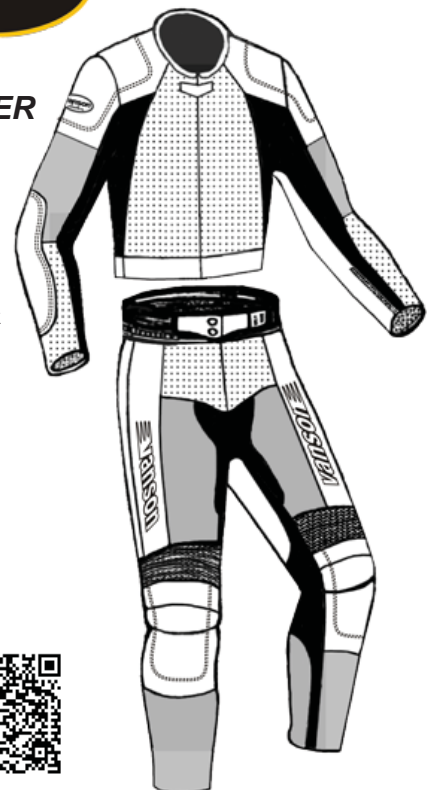
The new SMO2 featuring CE approved armor and a double zipper entry system has set a new benchmark for excellence in super moto racing suits. Standard features include POWERSTRECH - a VANSON™, specifically woven aramid and high tensile nylon stretch fabric.

- Spandex beaded collar for no bulk and no restrictions
- Double-zipper fronts for ease of entry and smooth aerodynamic fit
- POWERSTRECH™ material in shoulders, arms, legs and crotch to facilitate extreme ease of movement required for motard racing
- Combination of leather and textiles for increased safety while providing a lightweight fatigue reducing motard garment
- New CE approved armor with high flex to allow a greater range of motion while retaining a high level of safety
- Pro Perf™ leather panels to increase cooling, flexibility and comfort
- Extra Large Stretch panels in shoulders, back, and knees for maximum range of motion
- Removable perspiration wicking lining  
Only available on 1 piece suit

SM22

## MEN'S SM22 TWO PIECE SUPER MOTO SUIT \$1,395

Same as the one piece Super Moto suit but with the convenience of a full circumference zipper to lock the jacket to the pants. Only available as a single front zippered jacket.



# 2

## Select Options SMO2 Super Moto Suit

Select the options to be added to the basic suit as needed from those listed. Lettering and custom graphics will be specified in later pages.

#	Description of option	Price \$
<b>G.P. ARMOR OPTIONS</b>		
41EF	STRAP ON SPINE PAD	109.00 EACH
PR1	GP shoulder armor for suits	55.00 PAIR
PR2	GP elbow forearm armor	59.00 PAIR
PR3	GP knee armor	55.00 PAIR
PRO4	Articulated scale back pad - F.A.S. attachment to lining	89.00 EACH
<b>CLASSIC DECORATIVE DIAMOND TOP STITCHING</b>		
34Q	Diamond top-stitching on applied shoulder patch or shoulder	25.00 PAIR
37Q	Diamond top-stitching on elbow patch or elbow area	25.00 PAIR
38Q	Diamond top-stitching on knee patch or knee area	25.00 PAIR
<b>WAISTBAND OPTIONS</b>		
42	Add full circumference leather waistband to jacket. Can be made straight or slightly dipped in the back. Front over-lap is secured by either velcro or snaps. Circle below	60.00 EACH
	STRAIGHT BACK      DIPPED BACK      VELCRO      SNAP	
42C	Add full circumference solid CORDURA waistband to jacket. Can be made straight or slightly dipped in the back. Front overlap is secured by either velcro or snaps. Circle below	40.00 EACH
	STRAIGHT BACK      DIPPED BACK      VELCRO      SNAP	
<b>WRIST DETAILS</b>		
11	Velcro security tabs over the zip pull at wrist and/or ankle zippers. CIRCLE:      WRIST      ANKLE	15.00 PAIR
<b>LOWER LEG + ANKLE DETAILS</b>		
BOOT	Boot cut to fit over boots	25.00 PAIR
<b>LINING OPTIONS</b>		
17C	Replacement Nylon Mesh Lining. Linings attach at wrist and ankles. 1 piece suits only. Remove to wash or change.	60.00 EACH
17G	Replacement Rayon Lining. Linings attach at wrist and ankle. 1 piece suits only. Remove to wash or change. Rayon is suggested for cooler weather to help block wind.	60.00 EACH
17H	Replacement CoolMax Lining. Linings are attached at wrist and ankles. 1 piece suits only. Remove to wash or change. CoolMax is suggested for hot humid weather to help when perspiration wicking is desired.	60.00 EACH
17P	Make removable suit lining permanently sewn in eliminating zippers at the sleeves and lower legs.	20.00 XTRA
17X	No lining at all - raw leather interior of shell	40.00 XTRA
<b>PROperf LEATHER - CHANGE AREAS + PANELS to PROperf</b>		
20Y	PROperf knee expanders	20.00 XTRA
20Z	PROperf back expander - allows ventilation and flexibility	20.00 XTRA
46F	PROperf shoulder expanders	50.00 XTRA
<b>POWERSTRETCH NYLON + ARAMID WOVEN PANELS</b>		
PSCC	POWERSTRETCH COLORS - We will custom color the Powerstretch to match your suit. Note, not all colors are available and not all matches are 100% due to the differences between textile and leather surfaces etc.	40.00 SET
<b>EMBROIDERED LOGO + SPONSOR PATCHES</b>		
23	Velcro sewn in square on back to accept #24 (Leather Patch) Square Size approx. 12" wide X 12" high.(velcro pile)	20.00 EACH
24	Square of leather with strips of velcro to mate up with #23 Square Size approx. 12" Wide X 12" High. (velcro hook) Specify color, price does not include letters & numbers.	25.00 EACH
26	Sewing on Sponsor Patch(es) provided by customer covered in clear plastic to help keep patch clean. Cost is per patch	8.00 EACH
26B	Sewing on patch - no cover	7.00 EACH
26C	Chenille VANSON patch - Classic script with flowing "V" Patches are handmade and are approx 13 to 15 Long x 8 High	60.00 EACH

26D	VANSON STAR - two color approximately 1/2" outline Approximate sizes CIRCLE: 15.5" Wide x 13.75" High 13" Wide x 11.75" High   10.75" Wide x 10" High	49.00 EACH
26E	U.S. FLAG PATCH embroidered - on shoulders always set with star field facing forward. Show location in section 4.	10.00 EACH
26P	U.S. FLAG - LEATHER (approx. 8" x 9") handmade- 100% leather flag with full star field	79.00 EACH
26R	Crossed VICTORY checked flags - for back of suit	65.00 EACH
26S	Victory checkered flag - small for chest/shoulder/glove	40.00
26T	Reflective VANSON Oval (rubber Oval) Specify location and number in section 4.	N/C
26TA	VANSON Competition Oval(s) (vinyl) Specify location and number in section 4.	N/C
26TE	Cloth Embroidered VANSON Oval Specify location and number in section 4.	N/C
26TL	Leather embroidered VANSON Oval - specify colors Specify location and number in section 4.	10.00 EACH
26V	VANSON "V" in a circle - vintage Vanson logo from 1974 Circle is 3.25" in diameter. Used for chest and shoulders	20.00 EACH
26VV	VANSON "V" - vintage Vanson logo from 1974 "V" is 1.50" Wide x 2.25" High. Used on chest and shoulders	10.00 EACH
DVO	Delete VANSON Ovals	100.00

### VANSON LOGO LETTERING

10	"VANSON" extra logo-chargeable - show locations in sect. 4	15.00 EACH
10BA	To fit VANSON across butt of suit or pants	15.00 EACH
10BB	To fit VANSON across lower back	15.00 EACH
10BC	Small VANSON embroidered on both ends of collar	N/C
10BF	Small VANSON stitched to top sleeves along forearm	15.00 PAIR
10BS	Small VANSON letters stitched to under sleeves	PAIR
10BT	To fit VANSON letters stitched to thighs	15.00 PAIR
10BV	Small VANSON stitched around the knee puck velcro field	PAIR
10F	Sponsor Credit for placing additional "VANSON" on garment	-30.00 N/C

### PUCKS / KNEE SLIDERS

21	Tear-off leather patch to cover knee puck velcro field cover matches suit graphics - includes velcro field	40.00 PAIR
21A	Knee Pucks with Velcro field	80.00 PAIR
21B	Velcro fields for knee pucks (velcro only)	40.00 PAIR
21C	Replacement Pucks only. Price per pair	49.00 PAIR

### HUMP OPTIONS

HUMP SLIPSTREAM	pad in contoured closed cell non absorbent foam. Note: SLIPSTREAM pad may limit graphic sizing and availability on some suits and jackets.	190.00 EACH
HUMR	Add RADIO cavity to Hump. Includes hollowing out the Hump to contain the radio with earpiece wire pass-through in the front face of the hump. Order Hump separately. Radio not included.	20.00 XTRA
HUMV	SLIPSTREAM Hump enhanced with flow through ventilation system from the front of the Hump through airways into the back of the garment.	190.00 EACH
HUMW	Camel back reservoir holds about 8 fl. oz. of water. Water line is led inside to side of neck where velcro hangers support it. Order Hump separately.	20.00 XTRA

### HARDWARE OPTIONS

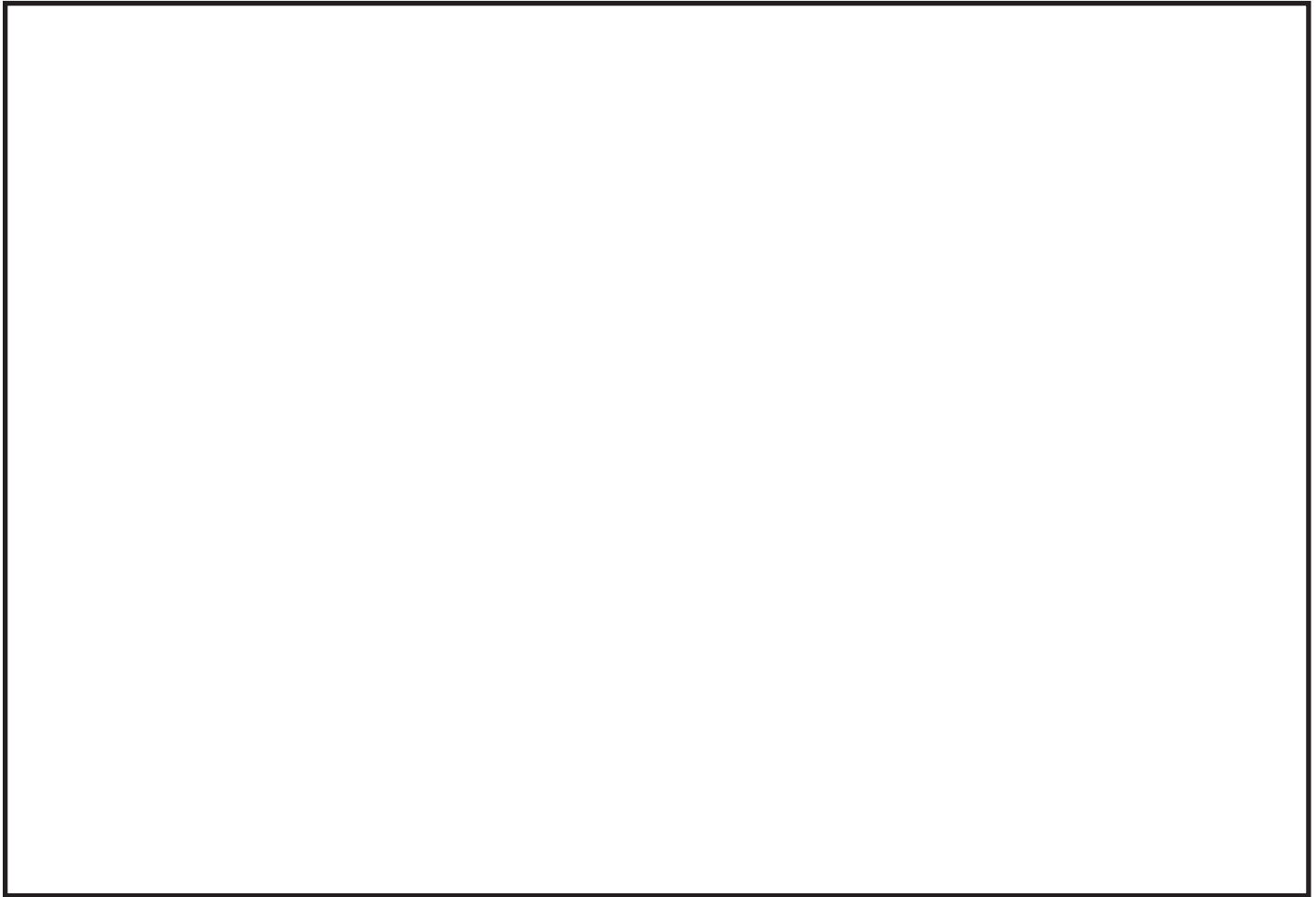
PEEZ	Fly zipper in racing suits with a double zipper front	30.00 EACH
------	---	------------

### SPECIAL OPTIONS\* Describe...

Total Options \$

\* If you want an option that is not shown, sketch and describe in detail your requirements. We will advise you of cost and practicality.

### 3 Draw or Attach Your Logo Here



<b>LOGOS &amp; TRADEMARKS</b> Send clear & precise artwork. We will advise you of cost.				COLOR(S)	LOCATION	Total no. of logos	TOTAL \$
		Logo					
		Logo					
		Logo					

**Logos TOTAL \$**

<b>vanson</b> in logo style letters can be added for no additional charge on suits only.				COLOR(S)	LOCATION	Total no. of logos	TOTAL \$
1 1/4"		Logo	<b>vanson</b>				15.00
2"		Logo	<b>vanson</b>				15.00
		Logo	<b>vanson</b>				15.00
		Logo	<b>vanson</b>				15.00

**LETTERS, NUMBERS & LOGOS TOTAL \$**



10553  
\$275.00



10918  
\$300.00



PG  
\$300.00



9500  
\$300.00



10082  
\$375.00



10542  
\$400.00



10173  
\$425.00



10918  
\$500.00



12374  
\$500.00



10297  
\$550.00



Suit Graphics  
up to \$150.00



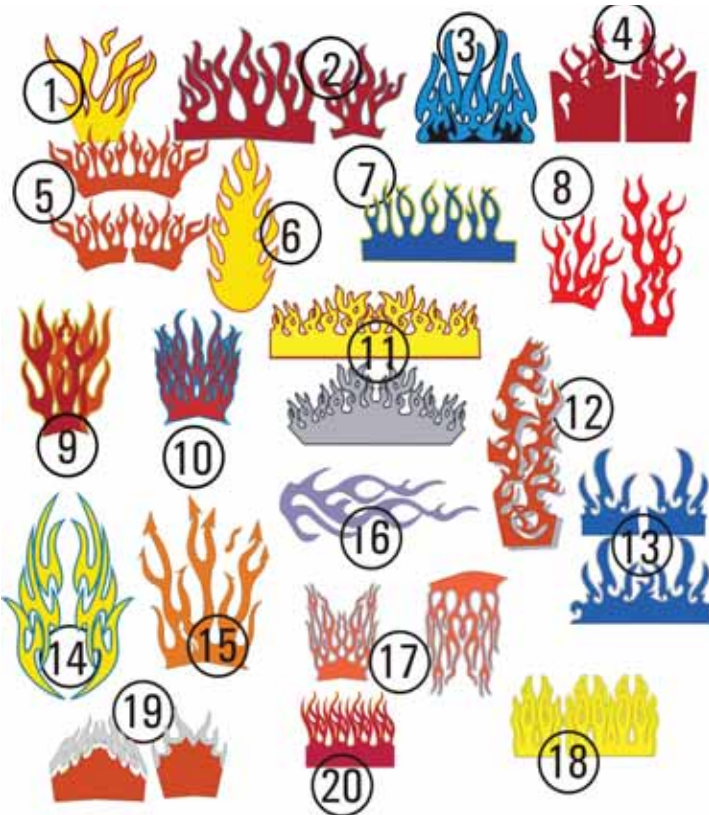
Suit Graphics  
from \$150.00 - \$300.00



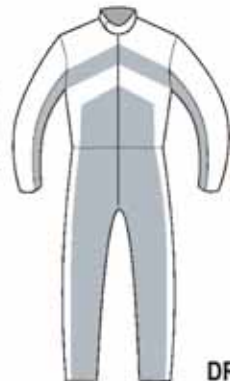
Suit Graphics  
over \$300.00

# 4 Design Suggestions

Graphic design shown here are additional to the cost of the suit. Call [508]678-2000 for pricing and other choices. Please Note: representation of these designs may have to be varied dependant on the suit type and the options you choose to have included in you suit. The #9 flame must be 2 colors minimum without an outline. #9 flame are a 3 color flame. Please do not pick only 2 colors for #9.



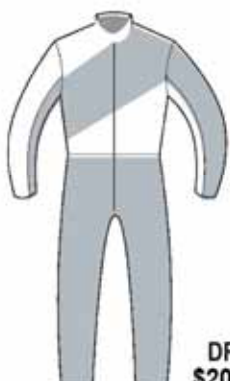
**Bone - Front**  
\$400.00



**DR1D**  
\$200.00



**Bone - Back**  
\$400.00



**DR2D**  
\$200.00



For information on stripe options and pricing, see "Stripe Style" section.

**Flames**  
\$75.00 per arm and per leg, + \$35.00 outline



**Design HH**  
\$200.00



**Design MS**  
\$400.00



**DR3D**  
\$250.00



**Design KK**  
\$150.00



**Design SA**  
\$250.00



**Design V3**  
\$150.00



# 5 Letters & Numbers [Types and Sizes]

Choose Type & style. Fill out the correct section below. Mark on diagram the location and direction the word[s] are to be read. Sizes shown are used as a guide only. Letters are sized to fit the design and pattern based on your specifications.

### Types of letters & numbers

The letters in the boxes after the examples are to identify the **TYPE**

PLAIN	P	2"	\$5 ea	3"	\$6 ea	8"	\$8 ea
OUTLINE	O	2"	\$8 ea	3"	\$10ea	8"	\$14ea
SHADOW	SH	2"	\$8 ea	3"	\$10ea	8"	\$14ea
SLOPING	S	2"	\$5 ea	3"	\$6 ea	8"	\$8 ea
SLOPING OUTLINE	SO	2"	\$8 ea	3"	\$10ea	8"	\$14ea
SLOPING SHADOW	SS	2"	\$8 ea	3"	\$10ea	8"	\$14ea

### Sizes of letters & numbers

**Note:** If you are ordering OUTLINE, SHADOW, SLOPING OUTLINE, or SLOPING SHADOW write the primary [or main] color FIRST followed by the color of the outline or shadow.

**Note:** Embroidery is available. Please call for quote. **Foil laminated and Solar leather 15% extra.** Size is used only for pricing and reference. Shape and space may require slight changes in size. If exact size is desired, please contact Vanson directly.

### Styles of Letters & Numbers

<b>BANCO</b>	<b>CANCUN</b>	<b>FUNHOUSE</b>	<i>Brush Script</i>
<b>BALLOON</b>	<b>CHOPHOUSE</b>	<b>FUTURA</b>	<b>SERPENTINE</b>
<b>BEACH HOUSE</b>	<b>COOPER</b>	<b>GINKO</b>	<b>SQUARE</b>
<b>BLOCK</b>	<b>COSMIC</b>	<b>OLDTOWN</b>	<b>STACCATO</b>
<b>BREMEN</b>	<b>EXPO</b>	<b>REVUE</b>	<b>TIMES ROMAN</b>
		<b>REVUE*</b>	<b>TIMES SCRIPT</b>
			<b>TRANSROBOT</b>

\*Available in CAPITALS only. additional fonts available. send sample - we will match as closely as possible.

TYPE	SIZE	STYLE	WORDING	COLOR(S)	LOCATION	Total no. of letters	TOTAL \$

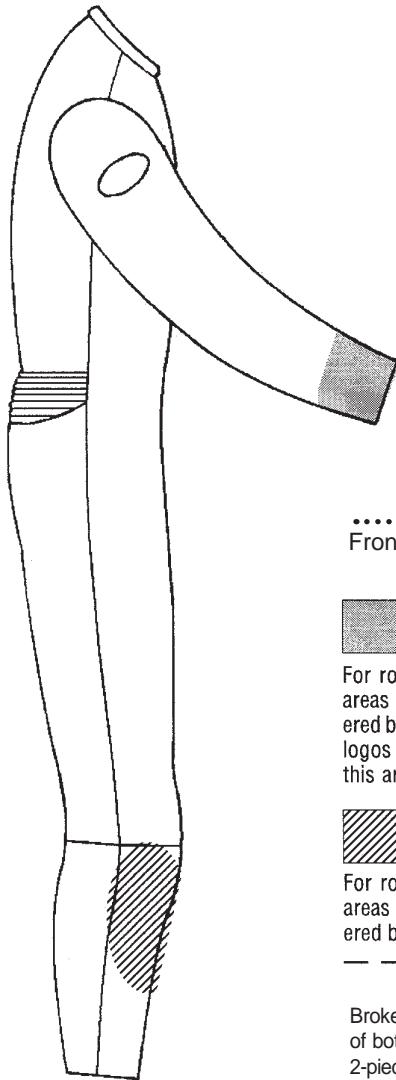
**Numbers and letters TOTAL \$**

# 6

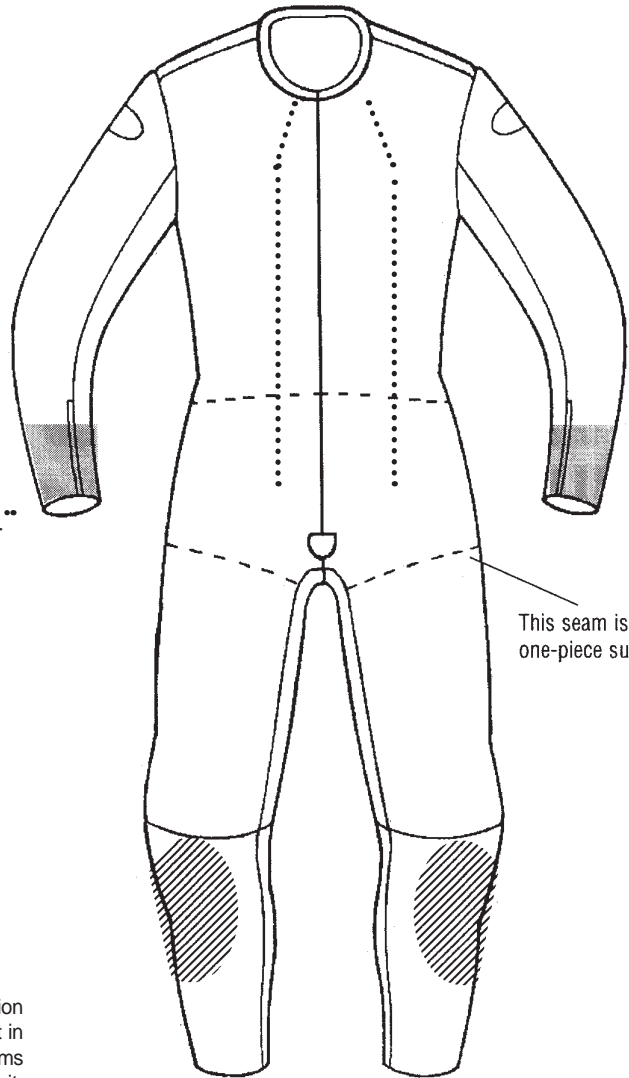
## Draw Your Own Design

Sketch suit design and show where any letters or numbers go. Show location of selected options such as sponsor patches and pockets. In addition to this section, fill out section 5 if letters and numbers are part of your design. (For design ideas, see section 4.) After reviewing design, we will advise you of the cost.

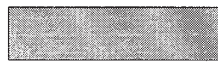
**RIGHT**



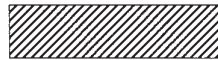
**FRONT**



.....  
Front Double Zipper  
(Volante)



For roadrace use, these areas are normally covered by gloves. Keep any logos and letters out of this area.



For roadrace use, these areas are normally covered by the knee sliders.

-----  
Broken lines show location of bottom edge of jacket in 2-piece suit and thigh seams at front of one-piece suit. Volante excluded.

This seam is on one-piece suits only.

**DESIGN AND STRIPE NOTES:** Use these lines for any notes that may help our design department interpret your design. You will be advised of cost after we have reviewed it.

---

---

---

---

---

---

---

---

### INLAYS & INLAY DESIGNS

Inlays are stripes over 3 inches in width. Inlay Designs are those color separations that require seam lines in addition to the basic seams (shown on the diagram). Symmetrical Inlay (side to side symmetry) are priced as \$100.00 top and \$100.00 bottom. Asymmetrical Inlays (no symmetry side to side) are \$150.00 top and \$150.00 bottom.

Top inlay total	\$
Bottom inlay total	\$
<b>TOTAL FOR INLAYS</b>	<b>\$</b>

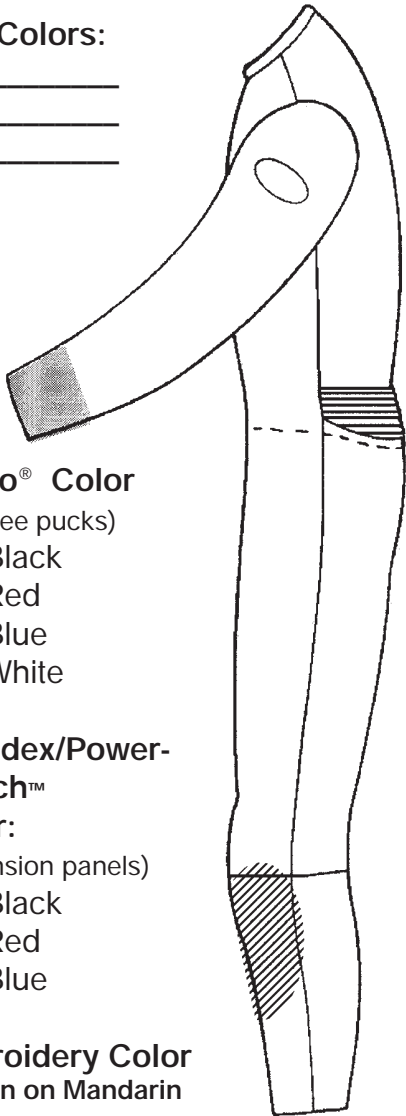
**NOTE:**

Changes to your order after we have receive it may affect our scheduling.  
Changes made after certain production steps may also incur extra charges.

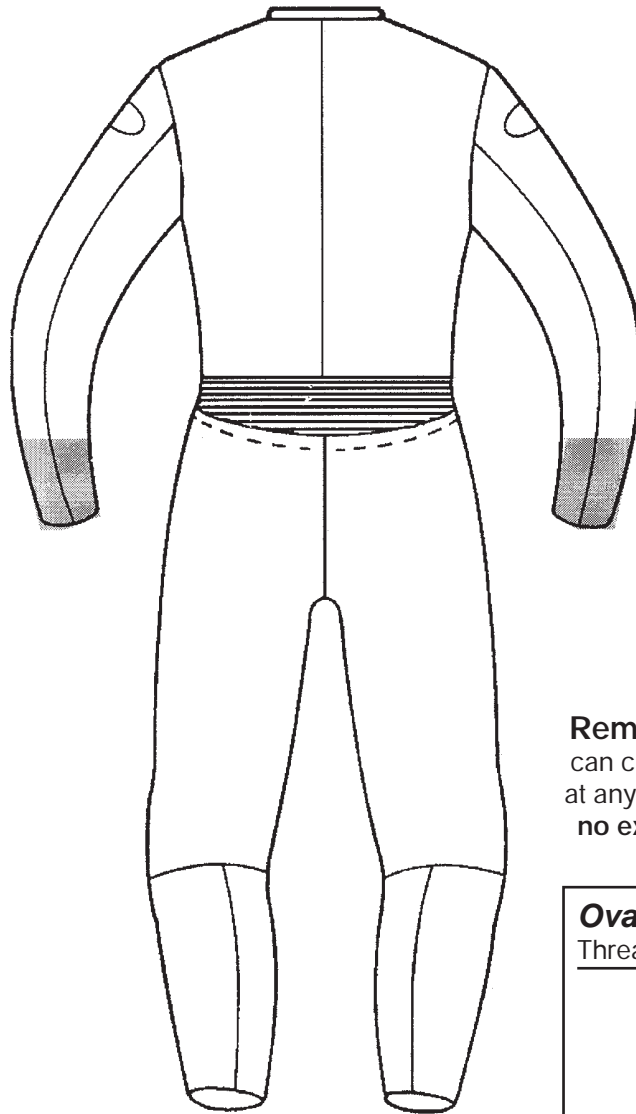
Suit Colors:

\_\_\_\_\_  
 \_\_\_\_\_  
 \_\_\_\_\_

**LEFT**



**BACK**



**Velcro® Color**

(for knee pucks)

- Black
- Red
- Blue
- White

**Spandex/Power-stretch™**

**Color:**

(expansion panels)

- Black
- Red
- Blue

**Embroidery Color**

Vanson on Mandarin collar:

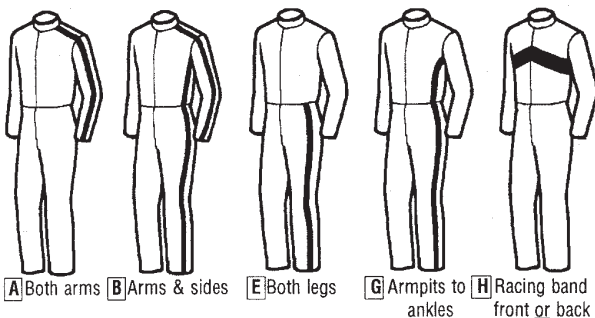
\_\_\_\_\_

**Remember, you can change colors at any seam line for no extra charge!**

Oval Colors	
Thread	Oval

**STRIPE MATRIX** Choose stripe pattern you want and location. Example: A4=2 inch (#4) going down arms (A). Cost \$30.00

Non standard widths are priced as next widest standard stripe. Stripes over 3" wide are an "inlay" see previous page for costing.



STRIPE STYLE	LOCATION ON SUIT (see diagrams to left)				
	A	B	E	G	H
1 Single, 1 inch stripe	\$25.00	\$50.00	\$30.00	\$40.00	\$30.00
2 Twin, 1 inch stripe	\$50.00	\$100.00	\$60.00	\$75.00	\$60.00
3 Triple stripe 2 color	\$75.00	\$125.00	\$90.00	\$115.00	\$90.00
4 Two inch stripe	\$30.00	\$55.00	\$35.00	\$45.00	\$35.00
5 Three inch stripe	\$35.00	\$60.00	\$40.00	\$50.00	\$40.00

**Note:** 3M® Reflective tape is offered in any stripe or pattern design as long as it can be done. This is a difficult material to work with.

**Note:** Foils and Special Effects leather cost 15% more.

<b>STRIPES TOTAL \$</b>
-------------------------

# 6 Sponsor Patch Placement

*Design Notes:*

---

---

---

---

---

---

---

---

---

---

---

---

*Customer Signature*

**Please send all sponsor patches to Vanson with your order.**

List Sponsors:

---

---

---

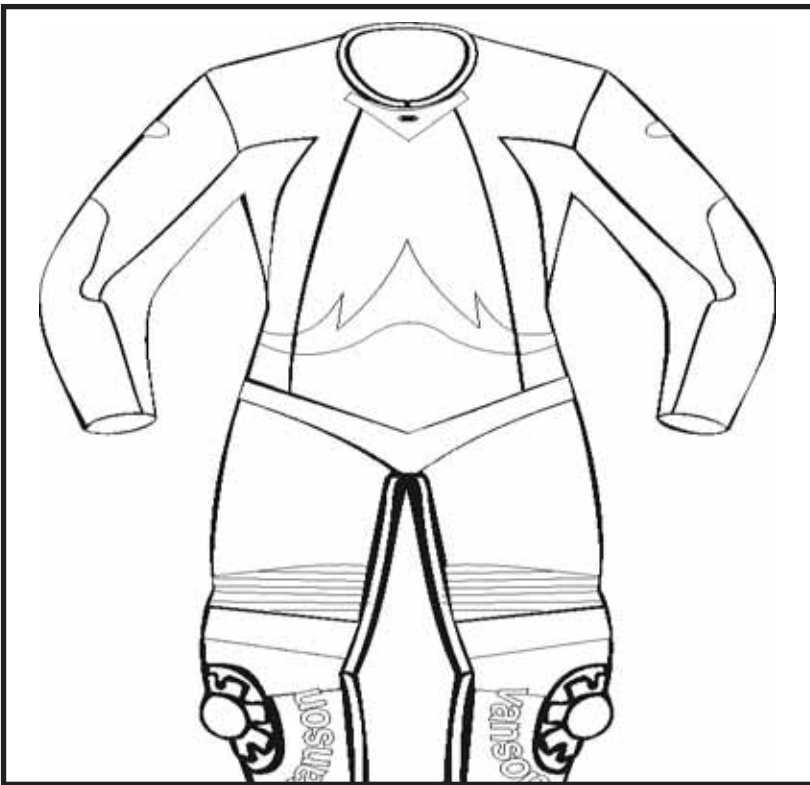
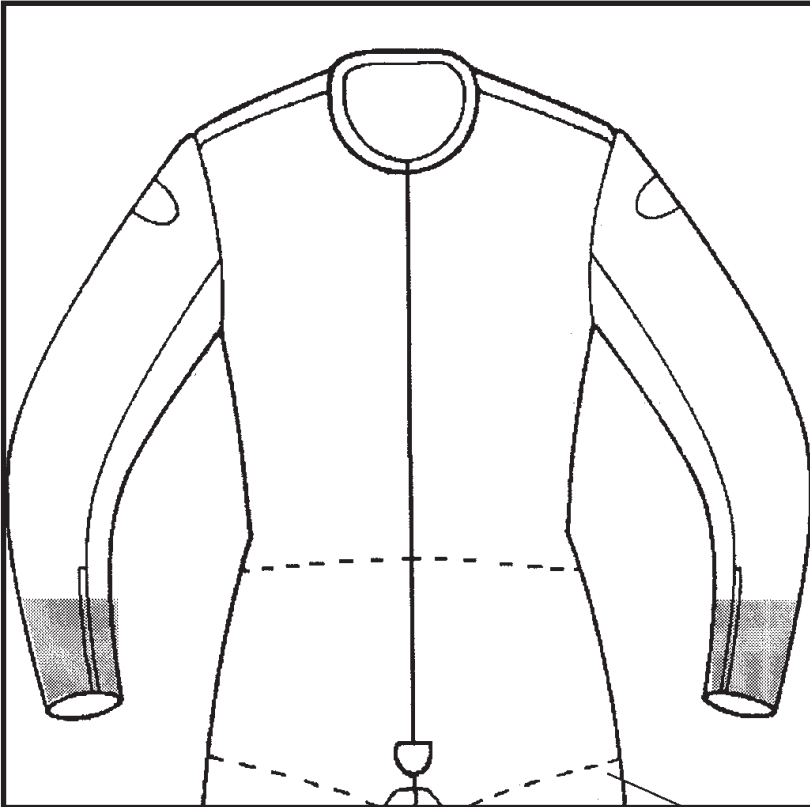
---

---

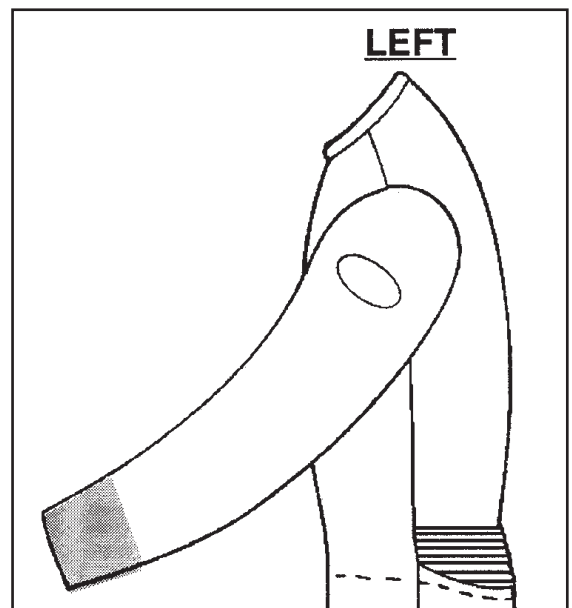
---

---

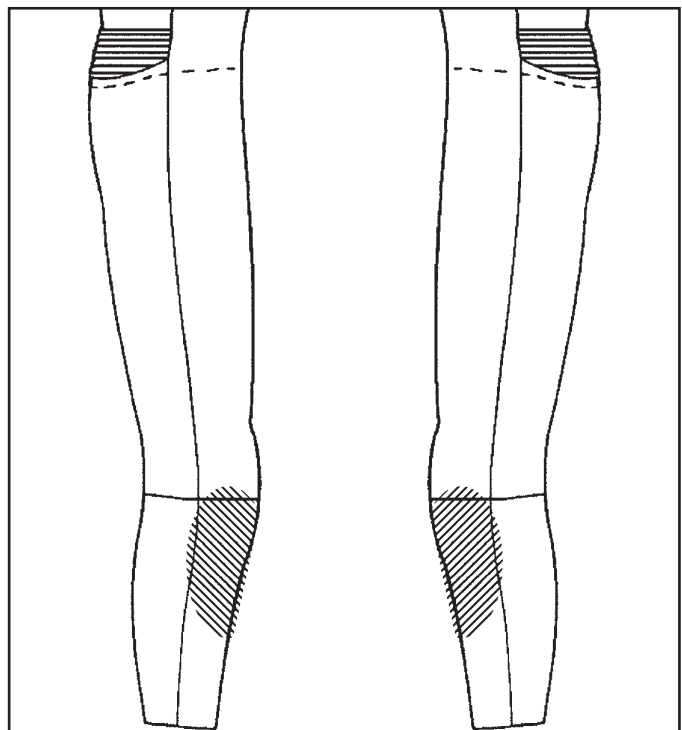
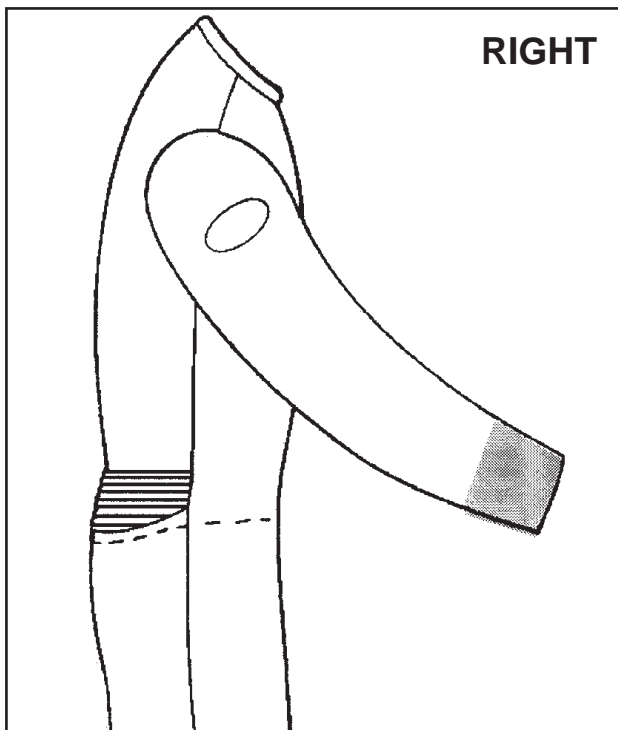
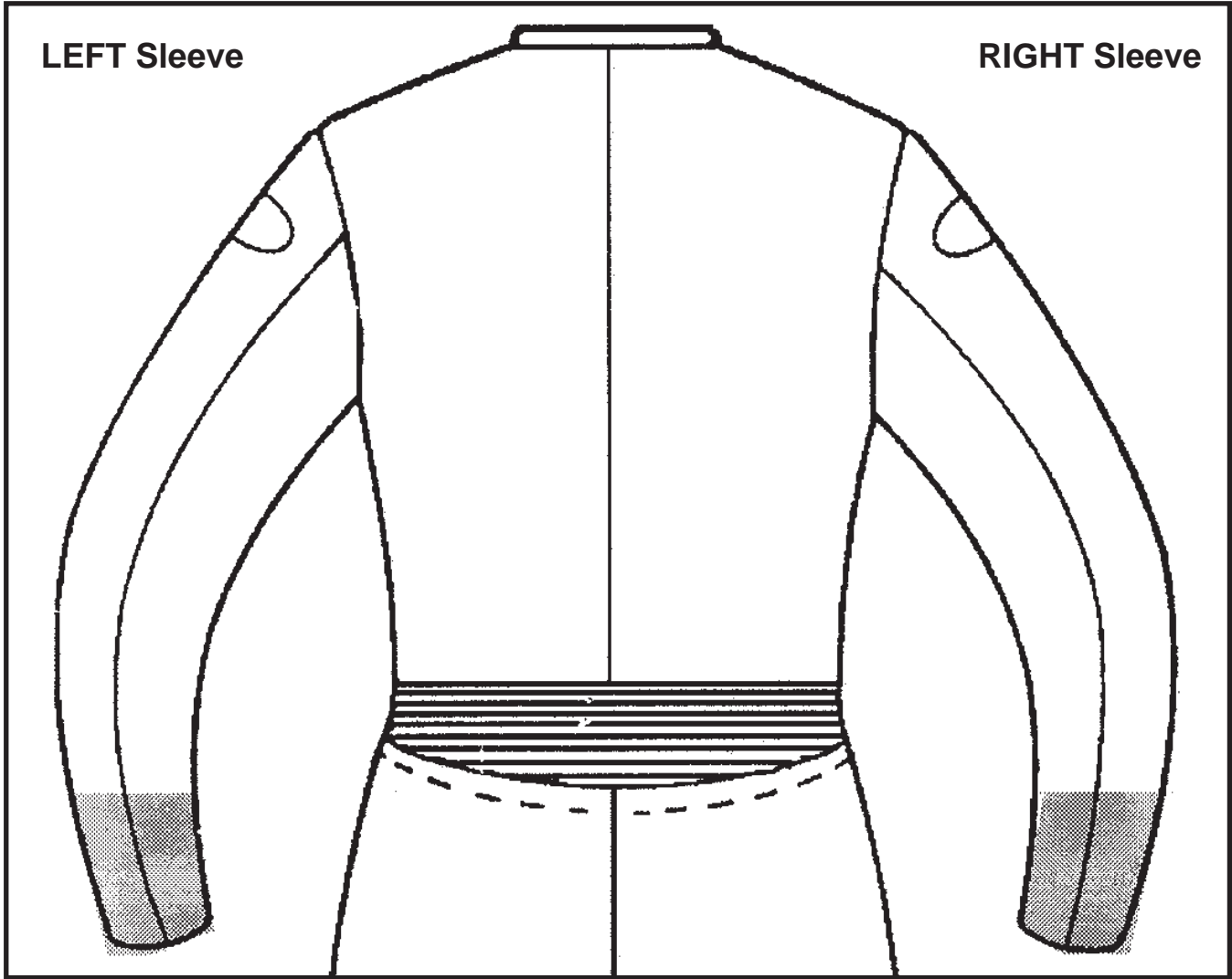
---



**Vanson Leathers is not responsible for supplying sponsor patches.**



# 6 Lettering, Sponsor Patch Placement and Logo Design





For detailed visual instructions, please check our web site at:  
[www.vansonleathers.com](http://www.vansonleathers.com) and click on custom garments to go to the presentation at:  
[www.vansonleathers.com/measure1/contents.htm](http://www.vansonleathers.com/measure1/contents.htm)



Measuring Video

## Some suggestions on taking good measurements and using our Measurement Check Sheet

1. Wear a pair of *tight fitting jeans* (with empty pockets) and a t-shirt.  
(Please note on form if measurements are taken over different style clothing ie: shorts or sweat pants).
2. Stand up straight. Look straight ahead, do not look at the person measuring you.
3. Position the elastic belt at the natural waistline (over the navel).  
Be sure the elastic belt is parallel to the floor and that it does not move during the process.

On the next page, you will find a measurement check sheet. This is not a guarantee that you will not need to re-do any measurements, but helps to eliminate and/or identify incorrect measurements. Take the time to calculate your measurements and compare them. You are allowed 1" difference plus or minus on your nape of neck to wrist measurement (#12) and 1/2" margin of error on all others. Please remember that you cannot measure yourself.

**This is a two person operation!**

### A few helpful hints for the measurer:

When measuring the total torso (#39), you go from the hollow in the neck, through the legs and up to the vertebrae that protrudes from the base of the neck. (On some people it is hard to find. Have them look down and it will be easier to locate that vertebrae. After locating the vertebrae, have them straighten up and look forward before you take the measurement.) **Make sure to follow the contours of your body, front & back.**

When measuring the rise (#31), you go from the navel through the legs and to the same point as navel on your back.

When measuring the inseam, follow the seam on their snug jeans. If their jeans are baggy (which is not recommended) have them hold the corners of their pockets and lift until the jeans are snug in the crotch area. To find the center of the knee, have them bend their leg and follow crease to center. Do not allow the subject to move at all as all the measurements are critical and inter-related.

When measuring across the shoulders a good reference (if the shoulder bones are not apparent) is to follow the underarm crease up to the top of the shoulders. You are looking for the upper seam of your arm socket. When you are doing your sleeve length and nape of neck to wrist be sure and use the same reference points.

The hip (#24) measurement is the fullest measurement around their rear.

To obtain an accurate bent knee circumference (#37), first place tape loosely around knee then have them get in their riding position. It is best to get on the bike or to simulate a bike by sitting on a chair and bending leg into the riding position.

#### **IMPORTANT:**

**Please send us THREE clear full length photos while being measured with the measuring device around your waist. One full frontal arms at side, one side profile, one rear.**

# 6 Take Your Measurements

## GENERAL INSTRUCTIONS:

- \* **Never measure yourself.** Get someone else to help you.
- \* For taking measurements, wear jeans that fit you comfortably but snugly and a t-shirt. Empty contents of pockets. Pull up pants for snug fit. Remove belt.
- \* On measurements marked with 6, use **Vanson Measuring Device** (see below). **Another tape will also be required** for measuring.
- \* Pull tape measure snug. **DO NOT allow extra** in your measurements.
- \* Vanson race suits are purposely designed for comfort and ease of movement **in the race position**. They are designed to be worn over minimum clothing. They may not feel comfortable while standing or walking. **They are not designed for touring or pedestrian use.**

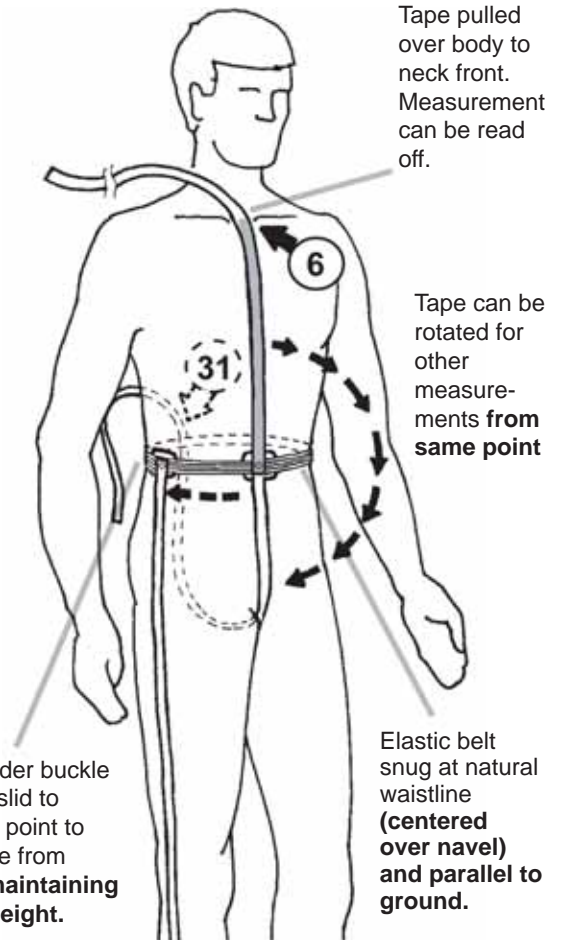
## HOW TO USE THE VANSON MEASURING DEVICE

- \* This device is designed to assist you in obtaining consistent measurements. This is of utmost importance in order for us to make your suit fit as it should. Use on measurements marked 6.
- \* Secure the **elastic belt** part of the device around waist at **navel**. Make sure **belt is parallel to ground**.
- \* The elastic should be a snug fit so it does not move up and down easily when you rotate the **tape** or slide the **tape slider buckle**.
- \* You can now snap the tape to the tape slider buckle.
- \* Have someone run the tape over your body to the point you need to **measure to**, and read off then write down the measurement.
- \* Rotate tape for other measurements that are **from the same point**. For other **measure from** points, slide tape slider buckle.

**Make sure elastic belt does not move accidentally during measuring process.**

**If you have questions, call Vanson's help line (508)678-2000**

Follow instructions carefully, use the Vanson Measuring Device where marked x. Always have someone else measure you.

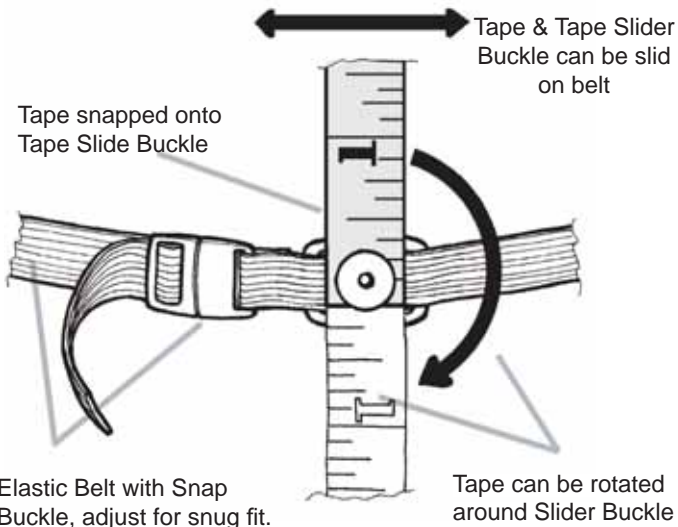


Tape slider buckle can be slid to another point to measure from **while maintaining same height.**

Elastic belt snug at natural waistline **(centered over navel) and parallel to ground.**

## Vanson Measuring Device in use.

Example shows measuring neck front (6) to natural waistline (navel). Other measure point example shown is (31)



**Vanson Measuring Device**

For detailed visual instructions, please check our web site at:  
[www.vansonleathers.com](http://www.vansonleathers.com) and click on custom garments to go to the presentation at:  
[www.vansonleathers.com/measure1/contents.htm](http://www.vansonleathers.com/measure1/contents.htm)



Measuring Video

# 7

## Custom Measurements

(You must perform all Measurement Checks before we will accept a custom order)



Measuring Video

Vanson Use:  
 Initials of sales person taking measurements    
 Date

If you wear a spinepad or blast vest other than what comes with a Vanson suit please measure with armor on and place in dashed boxes were indicated.

**1) Neck** .....   
 Around neck, just below Adam's apple.

**2) Upper Chest** .....   
 Across front only, from arm/chest crease to arm/chest crease (or where arm contacts chest), about 3" below base of neck.

**3) Chest** .....   
 Around fullest part with the tape high up under arms with arms at sides (for women, around fullest part of bust).

**X 4) Waist** .....   
 At navel, where you have the elastic belt of the Vanson Measuring Device, make sure your tape is parallel to the floor.

**5) Beltline** .....   
 Around body at top of pants waistband, but not over the belt.

**X 6) Waist to Neck, Front** .....   
 From the waist at navel (move **tape slide buckle** along elastic belt to point shown in fig. 1) to the top of the rib cage.

**7) Neck to Beltline, Front** .....   
 From top of the rib cage to top of pants (waistband).

**X 8) Waist to Neck Back** .....   
 From the waist (move **tape slide buckle** along elastic belt to point shown in fig. 2) to base of neck (where the vertebrae protrudes from the spine).

**9) Neck to Beltline Back** .....   
 From the base of neck (where the vertebrae protrudes from the spine) to the top of pants (waistband).

**10) Across Shoulders** .....   
 Straight across from shoulder bone to shoulder bone.

**11) Sleeve Length** .....   
 From one shoulder bone (same as #10) to center of wrist bone with arm by side

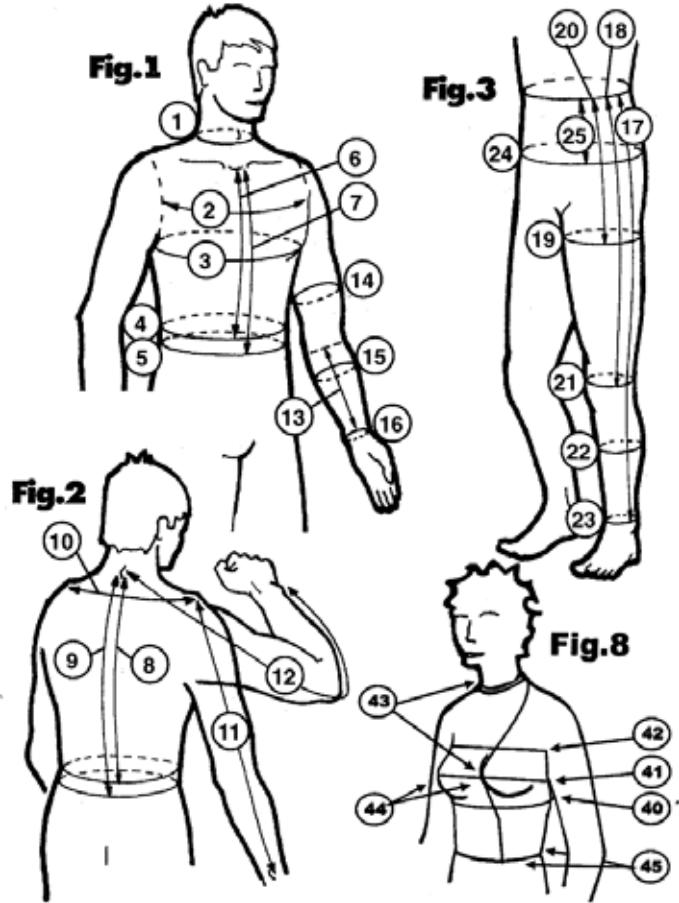
**12) Nape of Neck to Wrist** .....   
 Place fist in front of chest keeping arm parallel to floor. Take measurement from base of neck (where the vertebrae protrudes from the spine) around bent elbow to wrist bone.

**13) Wrist to Inner Elbow** .....   
 Bend arm, find crease, measure from crease line to center of wrist bone with arm straight down.

**14) Bicep** .....   
 With muscle flexed around widest part.

**15) Forearm** .....   
 With muscle flexed around widest part, about 2" down from elbow crease.

**16) Wrist** .....   
 Around wrist bone at center of wrist.



**X 17) Outseam from Waist** .....   
 From waist (move **tape slide buckle** along elastic belt to point shown in fig. 3) down outside of leg to center of anklebone with tape against body.

**X 18) Waist to Knee** .....   
 From waist ( move **tape slide buckle** along elastic belt to point shown in fig. 3) down outside of leg to center of knee at side.

**19) Thigh** .....   
 Around thigh about 2" below crotch with tape parallel to floor.

**X 20) Waist to Thigh** .....   
 From waist (move **tape slide buckle** along elastic belt to point shown in fig. 3) down leg to where you have just taken thigh measurement (#19).

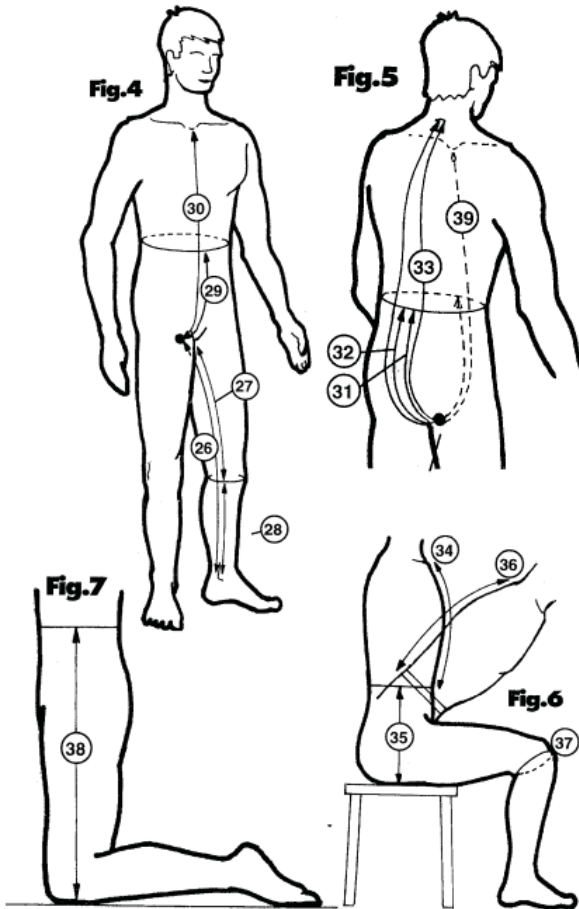
**21) Knee** .....   
 Around center of knee with leg straight.

**22) Calf** .....   
 Around fullest part of calf, or over boot if worn under leathers.



Name \_\_\_\_\_  Male  Female  
 Height \_\_\_\_\_ Weight \_\_\_\_\_ Age \_\_\_\_\_

**(Be as accurate as possible when measuring your height)**



**23) Ankle** .....   
 Just above anklebone, or over boot if worn under leathers.

**24) Hips** .....   
 Around fullest part, parallel to floor, about 7" below waist line.

**X 25) Waist to Hips** .....   
 From waist (move tape slide buckle along elastic belt to point shown in fig. 3) down outseam to point where #24 was taken.

**26) Inseam** .....   
 From crotch seam down inside of leg to anklebone (pull pants up snug before measuring).

**27) Crotch to Mid-knee** .....   
 From crotch seam down inside of leg to center of knee while standing with pants pulled up snug.

**28) Knee to Ankle** .....   
 From center of knee to center of anklebone along inseam.

**X 29) Waist to Crotch, Front** .....   
 From waist front (move tape slide buckle along elastic belt to point shown in fig. 4) to crotch seam with pants pulled up snug.

**30) Crotch to Neck, Front** .....   
 From crotch seam to neck hollow with pants pulled up snug.

**X 31) Front and Back Rise** .....   
 From waist back (move *tape slide buckle* along elastic belt to point shown in fig. 5) to waist front (where you have centered the elastic belt of the Vanson Measuring Device), between legs with pants pulled up snug.

**X 32) Waist to Crotch, Back** .....   
 From waist back (move *tape slide buckle* along elastic belt to point shown in fig. 5) to crotch seam with pants pulled up snug.

**33) Crotch to Neck, Back** .....   
 From crotch seam to base of neck (where vertebrae protrudes from spine). Take this measurement with pants pulled up snug and hold tape against body.

**X 34) Waist to neck, Front Seated** .....   
 From waist front (Belly Button) to hollow at base of neck.

**X 35) Crotch Depth** .....   
 Sit on flat surface. From waist at side seam (move *tape slide buckle* along elastic belt to point shown in fig. 6) to the flat surface you are sitting on.

**36) Neck to Beltline, Bent Over** .....   
 From beltline at back (top of pants) to base of neck (where vertebrae protrudes from spine) in the riding position.

**37) Knee Circumference, Bent** .....   
 Place tape around knee with leg straight. Bend knee, allow tape to get longer knee, take measurement (fig 6).

**X 38) Waist to Floor, Kneeling** .....   
 From waist at side seam (move *tape slide buckle* along elastic belt to point shown in fig. 7) to the floor along outseam while kneeling.

**39) Total Torso** .....   
 From base of neck, front through legs with pants pulled up snug to base of neck at back. This is #30 + #33 = #39

*Women only see Fig 8*.....

**40) Circumference** .....   
 Measure just Underneath bust. ....

**41) Circumference** .....   
 Measure around widest portion of the bust .....

**42) Circumference** .....   
 Measure just above bust .....

**43) Back of neck to widest part of bust** .....   
 Bone at base of back of neck around to apex of bust .....

**44) Apex to Apex** .....   
 Measure across the bust from apex to apex ....

**45) Waist Front to Waist Back** .....   
 Measure from front waist (the elastic belt) directly over the apex to the shoulder point and back down to the elastic belt in back.....

# Measurement Check Sheet - double check your measurements on this sheet


	<div style="border: 1px solid black; padding: 2px; width: 100px; margin: 0 auto;">#6</div> <div style="text-align: center;">+</div> <div style="border: 1px solid black; padding: 2px; width: 100px; margin: 0 auto;">#29</div> <div style="text-align: center;">=</div> <div style="border: 1px solid black; padding: 2px; width: 100px; margin: 0 auto;"></div>	<b>Total Torso Measurement Taken</b> <div style="border: 1px solid black; padding: 2px; width: 100px; margin: 0 auto;">#39</div> <div style="border: 1px solid black; padding: 2px; width: 100px; margin: 0 auto;"></div>	<div style="border: 1px solid black; padding: 2px; width: 100px; margin: 0 auto;">#8</div> <div style="text-align: center;">+</div> <div style="border: 1px solid black; padding: 2px; width: 100px; margin: 0 auto;">#32</div> <div style="text-align: center;">=</div> <div style="border: 1px solid black; padding: 2px; width: 100px; margin: 0 auto;"></div>	
<b>Front Torso</b> <div style="border: 1px solid black; padding: 2px; width: 100px; margin: 0 auto;">#30</div> <b>Measurement Taken</b>	<b>Total</b>	<b>Total Torso Measurement calculated Total of #30 and #33</b>	<b>Total</b>	<b>Back Torso</b> <div style="border: 1px solid black; padding: 2px; width: 100px; margin: 0 auto;">#33</div> <b>Measurement Taken</b>

	<div style="border: 1px solid black; padding: 2px; width: 100px; margin: 0 auto;">#6</div> <div style="text-align: center;">+</div> <div style="border: 1px solid black; padding: 2px; width: 100px; margin: 0 auto;">#8</div> <div style="text-align: center;">+</div> <div style="border: 1px solid black; padding: 2px; width: 100px; margin: 0 auto;">#31</div> <div style="text-align: center;">=</div> <div style="border: 1px solid black; padding: 2px; width: 100px; margin: 0 auto;"></div>	<b>Total Torso Check #2</b> <div style="border: 1px solid black; padding: 2px; width: 100px; margin: 0 auto;">#39</div> <b>Measurement Taken</b>	<div style="border: 1px solid black; padding: 2px; width: 100px; margin: 0 auto;">#18</div> <div style="text-align: center;">+</div> <div style="border: 1px solid black; padding: 2px; width: 100px; margin: 0 auto;">#28</div> <div style="text-align: center;">=</div> <div style="border: 1px solid black; padding: 2px; width: 100px; margin: 0 auto;"></div>	<b>Outseam</b> <div style="border: 1px solid black; padding: 2px; width: 100px; margin: 0 auto;">#17</div> <b>Measurement Taken</b>	<div style="border: 1px solid black; padding: 2px; width: 100px; margin: 0 auto;">#27</div> <div style="text-align: center;">+</div> <div style="border: 1px solid black; padding: 2px; width: 100px; margin: 0 auto;">#28</div> <div style="text-align: center;">=</div> <div style="border: 1px solid black; padding: 2px; width: 100px; margin: 0 auto;"></div>	<b>Inseam</b> <div style="border: 1px solid black; padding: 2px; width: 100px; margin: 0 auto;">#26</div> <b>Measurement Taken</b>
--	---	---	--	--	--	---

	<div style="border: 1px solid black; padding: 2px; width: 100px; margin: 0 auto;">#29</div> <div style="text-align: center;">+</div> <div style="border: 1px solid black; padding: 2px; width: 100px; margin: 0 auto;">#32</div> <div style="text-align: center;">=</div> <div style="border: 1px solid black; padding: 2px; width: 100px; margin: 0 auto;"></div>	<b>Total Rise</b> <div style="border: 1px solid black; padding: 2px; width: 100px; margin: 0 auto;">#31</div> <b>Measurement Taken</b>	<b>Total</b>
--	--	---	--------------

**Note:** To insure accuracy all measurement checks should come to within 1/2" of the measurement taken.

**Vanson does not recommend the use of non Vanson Armor in a Vanson suit.**

	<div style="border: 1px solid black; padding: 2px; width: 100px; margin: 0 auto;">#10</div> <div style="text-align: center;">÷ 2=</div> <div style="border: 1px solid black; padding: 2px; width: 100px; margin: 0 auto;"></div> <div style="text-align: center;">+</div> <div style="border: 1px solid black; padding: 2px; width: 100px; margin: 0 auto;">#11</div> <div style="text-align: center;">=</div> <div style="border: 1px solid black; padding: 2px; width: 100px; margin: 0 auto;"></div> <div style="text-align: center;">+ 1.50</div> <div style="text-align: center;">=</div> <div style="border: 1px solid black; padding: 2px; width: 100px; margin: 0 auto;"></div>	<b>Nape of Neck to Wrist</b>  Measuring Video	<div style="border: 1px solid black; padding: 2px; width: 100px; margin: 0 auto;">#12</div> <b>Measurement Taken</b>	<div style="border: 1px solid black; padding: 2px; width: 100px; margin: 0 auto;"></div> <b>Total</b>
--	---	--	--	---

**IMPORTANT:** Please send us **THREE** clear full length photos while being measured with the measuring device around your waist. One full frontal arms at side, one side profile, one rear.

**Fit Notes - What Style Bike are You Riding?**

- Are you a body builder? No  Yes
- Are there any existing physical conditions that should be allowed for in the fit of this suit? If Yes, describe.  
\_\_\_\_\_
- Are you measuring over any braces/armor? If Yes, describe.  
\_\_\_\_\_
- What type/manufacture spine pad do you wear?  
\_\_\_\_\_
- Do you have a belly?  
Please circle the one that best fits you.  

Medium	Large	Xlarge
--------	-------	--------

Note: DR2 suit only - circle one:    Tight    Snug    Comfort

**Riding Position - Drag Race**

Upright       Race Tuck       Laydown




**Riding Position - Street or Road Race**

Super Sport       250 GP       Sidecar

**Handlebar Position - Check One**

Drag Bars       Clip-ons       Low Rise Sport Bars

Race Tuck      Extreme Tuck      Laydown



# Custom Racing Suits

U.S. Made . . . experience the best!

951 Broadway, Fall River, MA 02724

Phone (508) 678-2000 • Fax (508) 677-6773

E-Mail: vanson@vansonleathers.com • Web Site: www.vansonleathers.com

Measurements taken by \_\_\_\_\_ Date and location \_\_\_\_\_

## Order Form

**After verification of measurements,  
we guarantee the fit at no extra charge!**

Type or print clearly. Fill out all the relevant sections. Be sure to read this form carefully, including the terms and conditions section.

**All orders must be signed and accompanied by a 50% deposit.**

**DUE DATE MAY CHANGE WITHOUT NOTIFICATION.**

**Prices subject to change without notice before receipt of order.**

SUIT STYLE #	SUIT COLOR(S)	Vanson use only
		P. O. #

Salemsans #	Pick Up or Ship

Order Date

Office Use
Date Order Received

Dealer #

Due Date

Dealer Name \_\_\_\_\_

Customer's Name (if different from above) \_\_\_\_\_

Shipping Address \_\_\_\_\_

City \_\_\_\_\_ State \_\_\_\_\_ Zip \_\_\_\_\_

Dealer Phone (\_\_\_\_) \_\_\_\_\_ Customer W. Phone (\_\_\_\_) \_\_\_\_\_

Email \_\_\_\_\_ Customer H. Phone (\_\_\_\_) \_\_\_\_\_

Birth Date \_\_\_\_/\_\_\_\_/\_\_\_\_ (used for Cust #) First Race Date Needed \_\_\_\_/\_\_\_\_/\_\_\_\_

Method of Payment: VISA  MasterCard  AMEX  Discover

Money Order  Check  Check number

AMEX, Discover, VISA or MasterCard # \_\_\_\_\_

Exp. Date \_\_\_\_\_ CVC Code \_\_\_\_\_

Authorizing Signature \_\_\_\_\_

CALCULATE COST		For Vanson Use
Add the totals from each section of this form		
1 Basic Suit	\$	
2 Options	\$	
3 Graphic Design	\$	
4 Stripes Etc.	\$	
5 Letters & Numbers	\$	
Custom Fee	\$	
Total	\$	
Rush Charge (+20%)	\$	
MA res.add sales tax	\$	
Credit on file <input type="checkbox"/> TOTAL	\$	
Deposit 50%	\$	
	\$	
Shipping	\$	
<b>BALANCE DUE</b>	\$	

**NOTE:** If you change your order after we have received it your changes will affect our scheduling. Changes made after certain production steps will also incur additional charges.

### TERMS AND CONDITIONS

**All custom orders must be signed and be accompanied by a 50% deposit. This deposit is non-refundable once work has commenced on your order.**

A rush service is available for a 20% surcharge on the total price of the garment. This is intended to cover costs related to producing your garment within 15 working days. However, this is not a guaranteed service and is dependant on our existing backlog when your order is received. In the event we are unable to produce your suit within the specified time, the rush charge will be refunded. Accurate measurements are your responsibility.

**Alterations due to inaccurate measurements are chargeable to you.**

If the balance on the garment is not pre-paid, the garment will ship C.O.D. (cash or certified check) for the balance.

**Custom orders are not refundable, if any changes or alterations are required to the garment, it must be returned within 30 days from the date shipped.**

*All designs submitted or made as a result of this order become the exclusive property of Vanson Leathers Inc. and may not be used for any purpose without the written permission of Vanson Leathers, Inc. Vanson Leathers, Inc. reserves the right to change and modify product specifications.*

**Note:** Florescent and metallic finishes on leather are decorative and are not warrantied by Vanson. All metallic and florescent finishes are light sensitive and may fade in sunlight. All non drum dyed leather, including metallic and florescent finishes, cannot be refinished by Vanson.