

Custom Dirt Track Suit Guide



Quality...from Professionals...for Professionals!

Proudly made in Fall River, MA, U.S.A. from domestic and imported materials. Often copied, never equaled.

Industry Leading Patents

Over the years, we have developed new concepts for our riders, many have been patented. Here are a few of them...

- Ergonomic Fit
- Armor Systems
- Flow Through Ventilation
- Twin Front Zip

Currently **Vanson holds over 10 unique patents.**



Comfort + Innovation

- = **Confidence + Concentration**
- = **Safety + Speed**
- = **No Compromises**



Custom Racing Suits • Experience the best!

951 Broadway, Fall River, MA 02724

Phone (508) 678-2000 • Fax (508) 677-6773

E-Mail: vanson@vansonleathers.com

Web Site: www.vansonleathers.com

7 Easy Steps

- 1 - Pick Product;** select platform (style) to build.
- 2 - Order Options;** to enhance platform to suit your needs.
- 3 - Detail Design*;** Colors, Graphics, Stripes, Lettering & Logos. Use QR code to get to Measuring Guide.
- 4 - Add Accessories*;** Team Tee shirts, Balm, Gear bags, Tall + Chairs, Lanyards, CO₂ Cartridges, Airbag pulls, Bucket covers, Printed Garage jackets, Lanyards, Race gloves, Vbox to send, Etc.
- 5 - Make Measurements*;** Guaranteed fit, Fit assurance. Easy to use DIY form. Click QR code for Video on how to measure. Step by step directions. We check for a perfect outcome.
- 6 - Insure Investment*;** Buy Vanson's unique Asphalt Insurance. Use QR code for more information.
- 7 - Sign & Send* Order with deposit.**

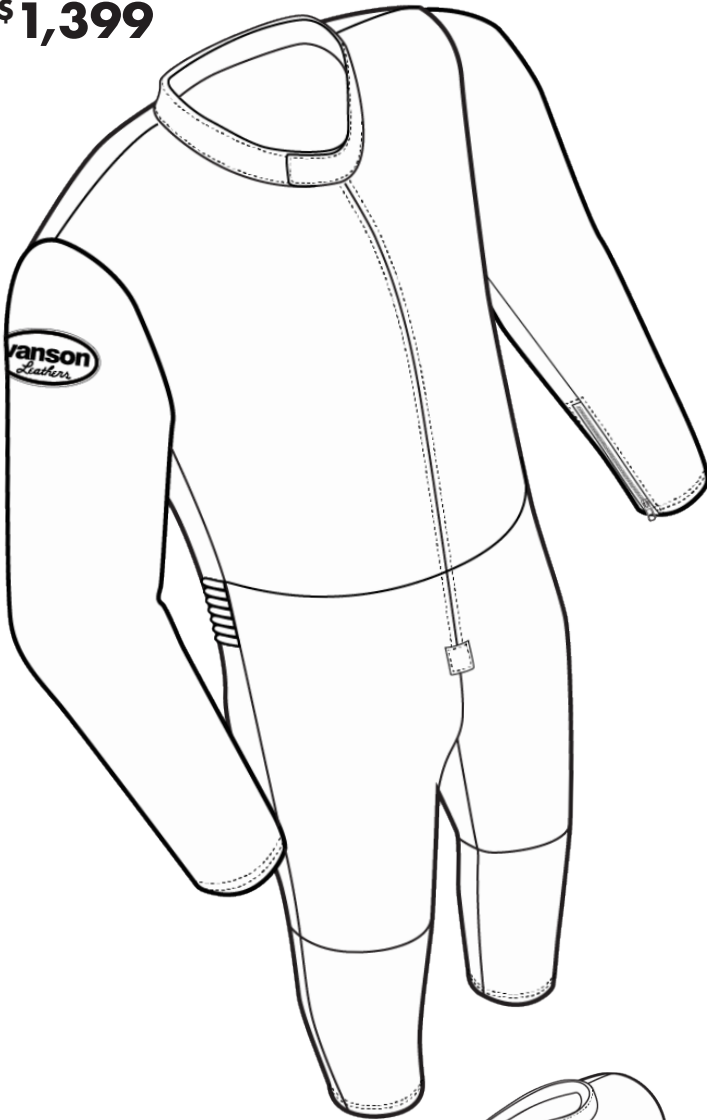
*** Use the Suit Guide & Order Form in the Custom Measuring Guide to design, accessorize, insure and record your measurements to complete your order.**

Free Consultations!!

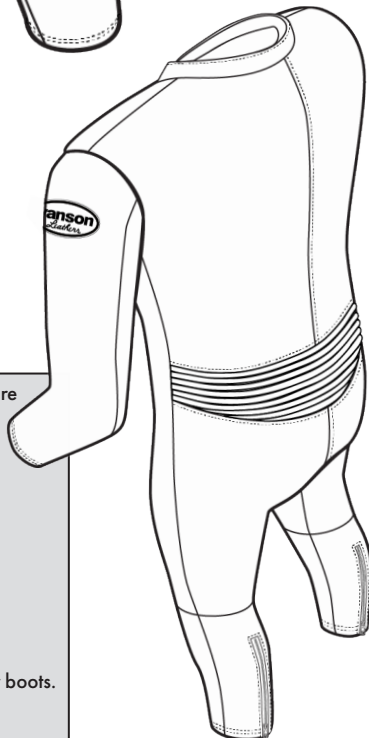
Call if you have questions, we are here to help. Or if you would like us to help guide you step by step through the Measurement Process, give us a call to set up an appointment for a Zoom or similar meeting.

DT1 Men's One Piece

Custom Single Zip
One Piece Suit
starting from
\$1,399

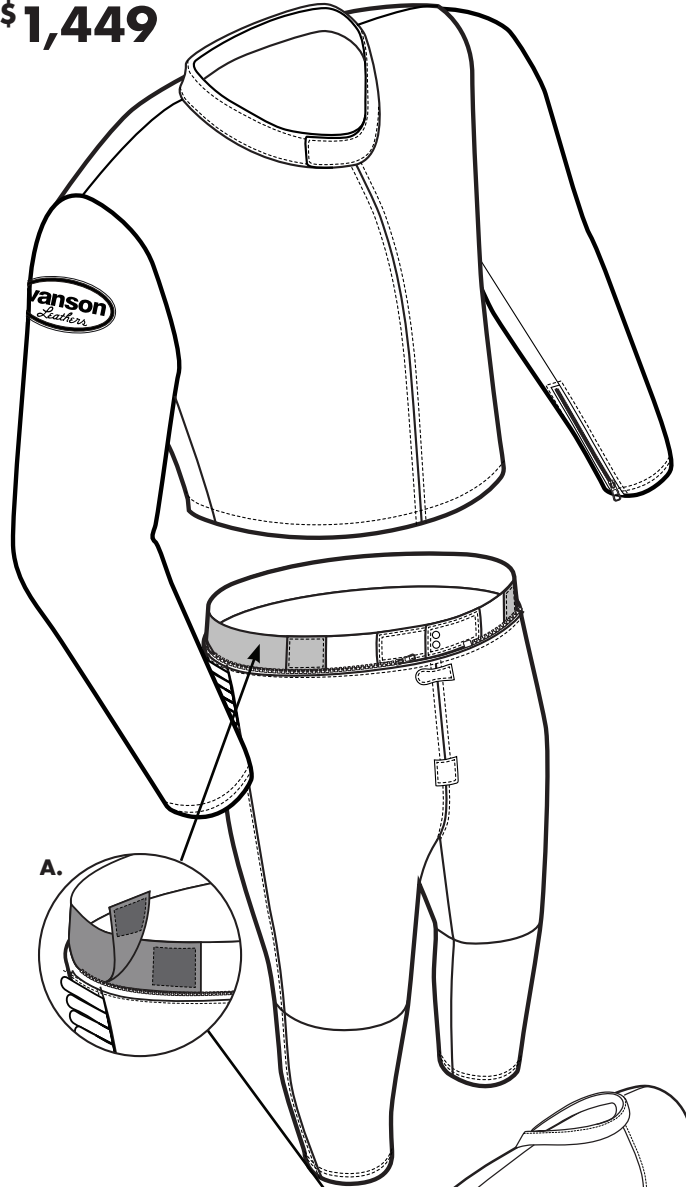


- Mandarin collar, Velcro® closure with Vanson logo embroidery
- License pocket
- D-ring on right sleeve.
- Leather expansion section at back for comfort and freedom of movement.
- Heavy duty front zipper with windflap and license pocket.
- Straight-cut pant legs with slight pre-curved knee and 10" ankle zippers on rear. Sized to fit over boots.
- Nylon mesh lining for comfort and ventilation.



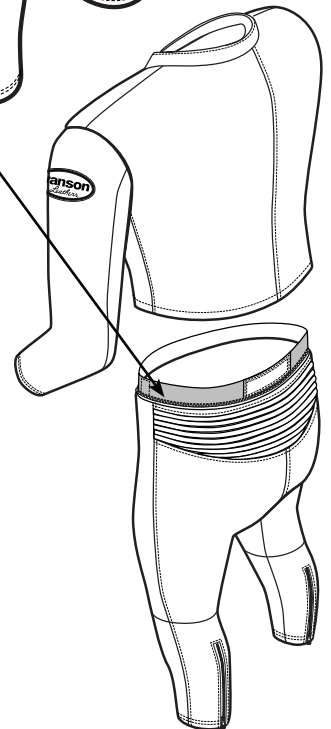
DT2 Men's TWO Piece

Custom Single Zip
Two Piece Suit
starting from
\$1,449



A. Expanding Waist - Expandable waist with adjustable elastic strap with velcro to give you a perfect fit when pants are not attached to jacket

- Mandarin collar, Velcro® closure with Vanson logo embroidery
- License pocket
- D-ring on right sleeve.
- Leather expansion section at back for comfort and freedom of movement.
- Elastic at top of pants for secure fit when worn without jacket.
- Heavy duty front zipper with windflap and license pocket.
- Straight-cut pant legs with slight pre-curved knee and 10" ankle zippers on rear. Sized to fit over boots.
- Nylon mesh lining for comfort and ventilation.



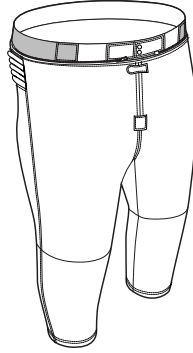
DT2T

Single Zip
Replacement
TOP of the DT2
\$975



DT2B

Replacement
BOTTOM
of the DT2
\$920



KBLK

Kevlar top for
warm weather
racing and a
more relaxed fit.
This can be fitted
with armor.
\$1,400



Select Options Dirt Track Suit

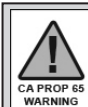
#	Description of option	Price \$
AIR-BAG OPTIONS + PARTS		
CO2 is released using a lanyard-pull trigger system. The CO2 cartridge and trigger are mounted either in a rear Hump or on the right front chest.		
ABCO	Extra CO2 canisters to replace and reload Air-Bag System.	29.00
AIRE	Air bag expanders-front/back/sides Standard lining Air bag and airbag lining are sold separately	450.00 1
AIRF	Installed system with Right chest Lanyard and Trigger	599.00
AIRV	Installed system with Hump and Rear Lanyard Trigger added to Hump - Hump sold separately	599.00
TET1	Xtra tether for front air bag	30.00
TET2	Xtra tether for Hump air bag	40.00
GP2 DIRECT-CONNECT CE ARMOR SYSTEM		
CE ARMOR is attached to the outside of closed cell pads. Direct-Connect Velcro holds the Armor + Pad in position. Shaped closed-cell pads keep the armor from shifting and serve to help absorb impact energy.		
GP21	GP2 CE Level 2 Shoulder armor	65.00 PAIR
GP22	GP2 CE Level 2 Elbow armor	69.00 PAIR
GP23	GP2 CE Level 2 Knee armor	65.00 PAIR
GP25	GP2 CE Level 1 Hip armor	45.00 PAIR
GP31	SHAPED GP2 PAD + D3O GHOST CE Level 2 Shoulder armor	69.00 PAIR
GP32	SHAPED GP2 PAD + D3O GHOST CL Level 2 Elbow armor	69.00 PAIR
GP33	SHAPED GP2 PAD + D3O GHOST CE Level 2 Knee armor	69.00 PAIR
GP35	SHAPED GP2 PAD + D3O GHOST CE Level 2 Hip armor	59.00 PAIR
DIRECT-CONNECT CE ARMOR SYSTEM		
DIRECT-CONNECT ARMOR - CE rated armor is connected directly to the shell with discrete velcro fields.		
CE21	Direct-Connect CE Level 2 Shoulder armor	69.00 PAIR
CE22	Direct-Connect CE Level 2 Elbow armor	69.00 PAIR
CE23	Direct-Connect CE Level 2 Knee armor	69.00 PAIR
CE25	Direct-Connect CE Level 1 Hip armor	45.00 PAIR
CEG1	Direct-Connect D3O GHOST CE Level 2 Shoulder armor	69.00 PAIR
CEG2	Direct-Connect D3O GHOST CE Level 2 Elbow armor	69.00 PAIR
CEG3	Direct-Connect D3O GHOST CE Level 2 Knee armor	69.00 PAIR
CEG5	Direct-Connect D3O GHOST CE Level 2 Hip armor	69.00 PAIR
BACK-PADS - Used for Protection along spine.		
PRO4	Articulated scale back pad - F.A.S. attachment to lining	129.00 EACH
VA4	VANTECH back pad insert. To go in Lining Pocket.	55.00 EACH
INSIDE CLOSED CELL PADDING		
Classic inside padding is closed cell foam backed with mesh or leather. Closed cell foam does not absorb moisture. Several closed cell applications have been superseded by either GP Armor or CE Armor options.		
1A	Elbow Padding - inside Oval football shape N/A w/armor	25.00 PAIR
1B	Knee Padding - inside Oval shape N/A w/armor	25.00 PAIR
1C	Spine Padding - inside - approx. 6 in wide N/A w/armor	40.00
1H	Chest Padding - inside - Dirt Track	60.00 EACH
1I	Bicep Padding - inside - Dirt Track	30.00 PAIR
1J	Shin Padding - inside - Dirt Track	30.00 PAIR
1S	Shoulder Padding - inside - closed cell N/A w/armor	30.00 PAIR
3	Hip Padding - inside sewn at hip area N/A w/armor	40.00 PAIR
INSIDE LEATHER PATCH - DOUBLE LEATHER PROTECTION		
4	Full Double seat, inside pants	35.00
4A	Inside leather elbow patches - football shape	30.00 PAIR
4B	Inside leather knee patches	30.00 PAIR
4D	Inside leather elbow/forearm (kidney shape) patches Wrist zippers must be along inseam as patch interferes	40.00 PAIR
4E	Inside leather shoulder patches	30.00 PAIR
GRND	POWERSTRETCH + LEATHER - Aramid sandwich at shoulder, arm, hips, seat and legs. GRIND is Vanson's own special layers of materials - including ARAMID (Kevlar), nylon and leather	180.00 SET

#	Description of option	Price \$
COLLAR DETAILS		
15A	Mandarin style collar with snap-back tab	25.00 EACH
22	Bound collar - CIRCLE: LEATHER or SPANDEX	25.00 EACH
22A	Velcro security tab across top of front zipper	20.00 EACH
22B	Nehru collar - open at center front	32.00 EACH
EPAULET / BELTS / SUSPENDER OPTIONS		
40A	Suspender buttons - set to waistband of pants - four sets of two buttons each to attach suspenders #40S	25.00 SET
SUSP	Suspenders - also sold separately - X elastic pattern	65.00 EACH
SUSP	Four flat leather ends - with 2 Button-Holes each end.	
JACKET WAISTBAND OPTIONS		
42	Add full circumference leather waistband to jacket. Can be made straight or slightly dipped in the back. Front over-lap is secured by either velcro or snaps. CIRCLE: STRAIGHT BACK DIPPED BACK VELCRO SNAP	80.00 EACH
2 PIECE SUIT JACKET TO PANTS CONNECTION OPTIONS		
Join a jacket and pants together to make a 2 piece suit. Change waist connection details.		
42O2	Change waist zipper pull direction from Right-to-Left around torso to Left-to-Right for Left-handed riders.	10.00 XTRA
WRIST DETAILS		
Wrist details are very important to achieving the perfect fit with as little bulk as possible.		
1I	Velcro security tabs over the zip pull at wrist and/or ankle zippers. CIRCLE: WRIST ANKLE	20.00 PAIR
14C	Wrist zippers at outseam (under the sleeve) Note: Outseam zippers are old style and may conflict with elbow armor. Wrist gussets included. Old school 1950's style.	15.00 PAIR
14G	Knit cuffs - option used in Dirt Track Suits + Fire Suits CIRCLE: FIRE-SUIT OTHER-SUIT	25.00 PAIR
40L	'D' Ring - Left Wrist - for kill switch cord PANT + LOWER LEG + ANKLE DETAILS	10.00 EACH
Pant options for security and comfort		
AS	We use a cut-away in the front of your pant cuff to reduce bulk and restriction when you are tucked in race position.	25.00 PAIR
FIT3	Straight legs - no knee seams, one piece legs.	50.00 XTRA
KS	Powerstretch Stirrups at end of pant hem - to hold pants down inside boots.	60.00 PAIR
LINING OPTIONS		
Lining options flagged as EACH are for full lining options in addition to the standard linings that come with garment.		
17	Rayon lining	N/C
17X	No lining at all - raw leather interior of shell	40.00 XTRA
CARL	Single layer CARBONX lining instead of standard lining.	100.00 XTRA
CARL	Carbonx liners give heat and flame protection.	
MAND	Customer Name - Build-Date - Unit-No.:	25.00 EACH
MAND	Printed on leather patch and sewn to lining	
INSIDE POCKET OPTIONS		
pockets set to lining - horizontally		
6A	Inside open top pocket set into lining, right side	20.00 EACH
6B	Inside open top pocket set into lining, left side	20.00 EACH
6D	Inside applied leather patch pocket CIRCLE: LEFT or RIGHT	25.00 EACH
PERFORATIONS ADDED TO SOLID PANELS FOR EXTRA VENTILATION		
These are larger holes, die cut, farther apart than PROperf. This allows the perforation of an otherwise solid leather panel. This is good for areas that need a little extra air flow.		
20A	PERFORATIONS - front - on body under arms	20.00 PAIR
20D	PERFORATIONS - entire upper front chest to waist	60.00 PAIR
PERFORATIONS- continued back page		

Select Options Dirt Track Suit (continued)

#	Description of option	Price \$
PERFORATIONS - Continued		
20E	PERFORATIONS - waist to crotch - front	35.00 PAIR
20F	PERFORATIONS - on body, behind side seam at under arm area	20.00 PAIR
46	PERFORATIONS - band across upper front chest - arm to arm	35.00 EACH
46A	PERFORATIONS - at bicep - top sleeves - next to inseam	20.00 PAIR
46B	PERFORATIONS - on inner thighs - top legs - along inseam	20.00 PAIR
46C	PERFORATIONS - on back of jacket, along side seams	20.00 PAIR
46D	PERFORATIONS - on rear at side seams - shoulder to waist	35.00 PAIR
PROperf LEATHER - CHANGE AREAS + PANELS to PROperf		
PROperf leather is leather that has been machine perforated with small diameter holes spaced closely together. This allows maximum air flow into the garment. PROperf leather is also softer and more flexible as a result of perforating		
20T	PROperf back of leg, calf from knee to ankle	15.00 XTRA
20X	PROperf lower front leg - from knee to ankle	20.00 XTRA
20Y	PROperf knee expanders	20.00 XTRA
20Z	PROperf back expander - allows ventilation and flexibility	20.00 XTRA
46E	PROperf under sleeve panels	20.00 XTRA
46P	PROperf fronts shoulder to thigh seam - (1 piece suit)	35.00 XTRA
46PJ	PROperf fronts shoulder to waistband - (jackets + suits)	25.00 XTRA
POWERSTRETCH NYLON + ARAMID WOVEN PANELS		
Powerstretch reduces bulk in the same manner as spandex, but is woven using high strength cordura nylon and aramid to achieve a high resistance to abrasion.		
39AK	POWERSTRETCH Elbow inseam Oval cut-outs	40.00 PAIR
39BK	POWERSTRETCH Behind knees Oval or Band 5 in high across leg	40.00 PAIR
39DK	POWERSTRETCH Knees to Ankle - Keyhole shape cut-out	50.00 PAIR
39FK	POWERSTRETCH Elbow/Forearm - Keyhole shape cut-out	50.00 PAIR
39HK	POWERSTRETCH 1 in strip Wrist to Armhole along sleeve inseam	50.00 PAIR
39IK	POWERSTRETCH 1 in strip along inseam - Crotch to mid-thigh	75.00 PAIR
39VK	POWERSTRETCH Full VELOCITY options - (suits only)	135.00 SET
Competition design @ arms/legs/crotch and across upper thigh		
40PS	POWERSTRETCH PRO-STOCK - Arms, Legs, and Crotch	250.00 SET
40VK	POWERSTRETCH VELOCITY 2 piece suit - Arms, Legs, and Crotch	175.00 SET
KC	Kevlar Cuffs replaces leather at your wrists to reduce bulk in your gloves. The cuff is 1.50 in high.	35.00 PAIR
EXPANDER PANEL OPTIONS		
Expander panels are generally made using PROperf leather or Medium weight Firenze leather to make the expander sections as soft, comfortable and flexible as possible.		
ELEX	Elbow Expanders allow free bending at your elbow and reduces the pulling down on your shoulders. CIRCLE: HEAVY-MESH(check tech for ok) SOLID-LEATHER PROperf	50.00 PAIR
EMBROIDERED LOGO + SPONSOR PATCHES		
Personalize your suit with special patches.		
23	Velcro sewn in square on back to accept #24 (Leather Patch) Square Size approx. 12 in wide x 12 in high (velcro pile) Old School. Vintage.	25.00 EACH
24	Square of leather with strips of velcro to mate up with #23 Square Size approx. 12 in Wide x 12 in High.(Velcro hook) Specify color, price does not include letters & numbers.	30.00 EACH
26	Sewing on Sponsor Patch(es) provided by customer covered in clear plastic to help keep patch clean. Cost is per patch.	10.00 EACH

#	Description of option	Price \$
EMBROIDERED LOGO + SPONSOR PATCHES - Continued		
26B	Sewing on patch - no cover	8.00 EACH
26C	Chenille VANSON patch - Classic script with flowing V'''	60.00 EACH
26C	Patches are handmade and are approx 13 in to 15 in long x 8 in high	
26D	VANSON STAR - two color approximately 1/2 in outline Approximate sizes CIRCLE: 15.5 in Wide x 13.75 in High 13 in Wide x 11.75 in High - 10.75 in Wide x 10 in High	49.00 EACH
26E	RED, WHITE and BLUE - U.S. FLAG Patch - Embroidered by Vanson. Placed on shoulders - always set with star field facing forward. Show location in section 4.	20.00 EACH
26F	BLACK/GREY - First Responder - U.S. FLAG Patch Embroidered by Vanson. Placed on shoulders - always set with star field facing forward. Show location in section 4.	20.00 EACH
26P	U.S. Flag - leather patch (approx. 12 in x 8 in) 100% leather flag with full 50 star field sewn to back	89.00 EACH
26R	Leather crossed VICTORY checkered flags - sewn on back	85.00 EACH
26S	Leather VICTORY checkered flag - small for chest/shoulder/glove	60.00 EACH
26T	Reflective VANSON Oval (rubber Oval)	N/C
26T	Specify location and number in section 4.	
26TA	VANSON Competition Oval(s) (vinyl)	N/C
26TA	Specify location and number in section 4.	
26TE	Standard Cloth Embroidered VANSON Oval Specify location and number in section 4.	N/C
26TL	Leather embroidered VANSON Oval - specify colors Specify location and number in section 4.	25.00 ACH
26TP	printed Vanson oval-specify colors	25.00 EACH
26V	VANSON V in a circle - vintage Vanson logo from 1974 Circle is 3.25 in in diameter. Used for chest and shoulders	25.00 EACH
26VV	VANSON V - vintage Vanson logo from 1974 V is 1.50 in Wide x 2.25 in High. Used on chest and shoulders.	20.00 EACH
DVO	Delete VANSON Ovals	100.00
VANSON LOGO LETTERING		
Traditional Vanson logos developed for competition leathers		
10	VANSON extra logo-chargeable - show locations in section 4.	15.00 EACH
10BA	Sized to fit - VANSON - across butt of suit or pants.	15.00 EACH
10BB	Sized to fit - VANSON - across lower back.	15.00 EACH
10BC	Small VANSON embroidered on both ends of collar.	STD
10BF	Small VANSON stitched to top sleeves along forearm	15.00 PAIR
10BS	Small VANSON letters stitched to under sleeves	15.00 PAIR
10BT	Sized to fit - Vanson - stitched to thighs.	30.00 PAIR
10BV	Small VANSON stitched around lower knee puck velcro field	30.00 PAIR
10F	Sponsor Credit for placing additional "VANSON" on garment"	-30.00 N/C
HUMP OPTIONS		
Humps were developed to fill in the void behind the helmet and thereby streamline the rider profile. Humps also serve to hide and protect gear such as Air-Bag mechanisms, radios and water camel systems.		
HUMV	SLIPSTREAM Hump enhanced with flow through ventilation system from the front of the Hump through airways into the back of the garment.	190.00 EACH
TOTAL OPTIONS \$		



CALIFORNIA PROP65 WARNING: This product can expose you to chemicals, substances and materials known to the State of California to cause cancer and birth defects or other reproductive harm.

ADVERTENCIA: Este producto puede exponerle a productos quimicos, sustancias y materiales que el estado de California reconoce como causantes de cancer y defectos de nacimiento u otros danos reproductivos.