



Custom Drag Racing Suit Guide

Quality...from Professionals...for Professionals!

Vanson Leathers understands professional racers. They depend on premium quality protective garments, fast knowledgeable service and styles and graphics to showcase the racer and his or her sponsors.

Vanson Custom Suits are made from top-grain U.S. cowhide approximately **3 1/2 oz.** per square foot and **1.4 -1.7 mm.** We are constantly developing new features and experimenting with new materials. This ensures that we can offer the best product and service to professional riders. Vanson offers a complete "menu" of options and lettering styles to choose from, allowing you to design the suit you want.

How to use this Form

Select the **Style** of suit based on the standard features which meet your racing needs. For each Style, there is a list of available **Options**. These Options are available at an additional cost to the base price of the suit. Select the **Style** then the **Options**. Next, you can **Draw Your Own Design** or choose from the many standard **Graphic** designs we have provided for you. Color selections can be made from Vanson's wide selection of drum-dyed colors.

Sample leather color swatches are available upon request. Remember, you can change colors at any seam line for **no extra charge!** To add a personalized touch to your custom suit use the **Lettering and Logos** section.

Note: Foils and Special Effects leather cost 15% more. Be sure to show the placement of any custom lettering in the spaces provided. Then, using the special **Vanson Measuring Device**, complete the **Take Your Measurements** section. Be sure to follow the directions carefully and fill out all the measurements in this section. In order to verify your measurements, it is **required** that you include your **Height, Weight, and Age.**

Finally, using the Custom Measuring Guide, take your measurements, complete the form and your order by filling out the **Shipping Information** and adding the cost from each section including any options to determine the **Total Cost** of your suit.

The Proof is in the Patents

Buying a Vanson suit is purchasing a unique piece of leather working history. Over the years, as we have developed our own, unique way of producing a better quality garment we've come up with entirely new concepts for our riders. As these innovations have been discovered and perfected, they have been patented.

Currently **Vanson holds over 10 unique patents.** These cover everything from the way we set the zippers in our garments for our venting system to our Floating Armor System. Carefully designed for your comfort and safety when working with our superior materials, we always seek to innovate without sacrificing the longevity of our suits.



Custom Racing Suits • Experience the best!

951 Broadway, Fall River, MA 02724

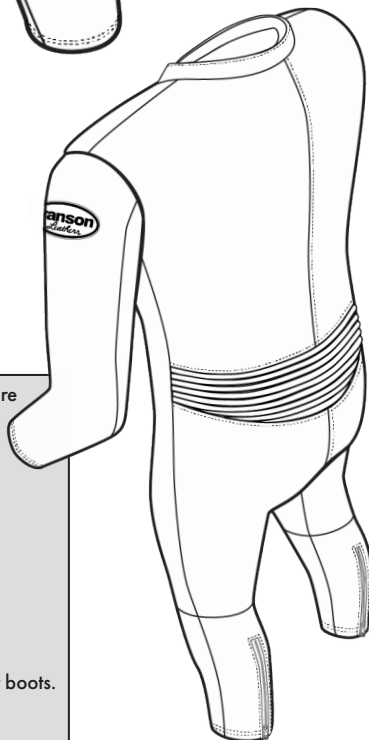
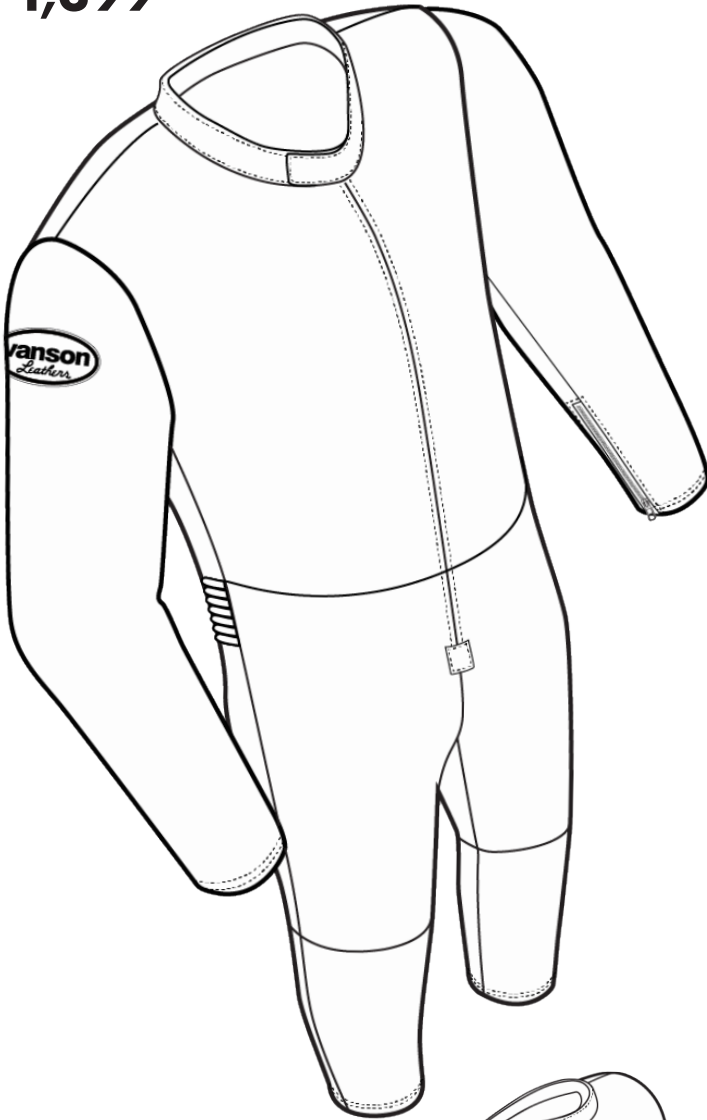
Phone (508) 678-2000 • Fax (508) 677-6773

E-Mail: vanson@vansonleathers.com • Web Site: www.vansonleathers.com

NOTE: You must use the Custom Measuring Guide to Design and Record Your Measurements Along with the Order Form

DR1 Men's One Piece

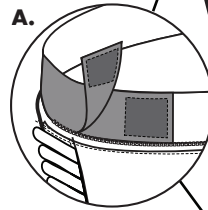
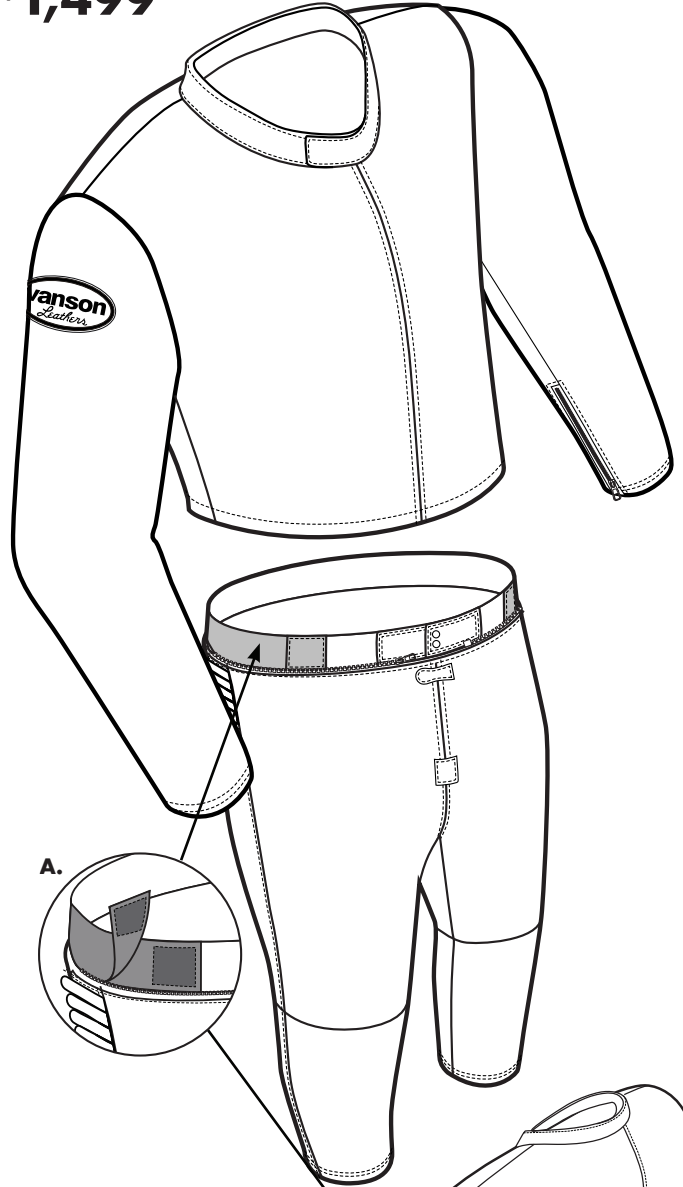
Custom Suit
starting from
\$1,399



- Mandarin collar, Velcro® closure with Vanson logo embroidery
- License pocket
- D-ring on right sleeve.
- Leather expansion section at back for comfort and freedom of movement.
- Heavy duty front zipper with windflap and license pocket.
- Straight-cut pant legs with slight pre-curved knee and 10" ankle zippers on rear. Sized to fit over boots.
- Nylon mesh lining for comfort and ventilation.

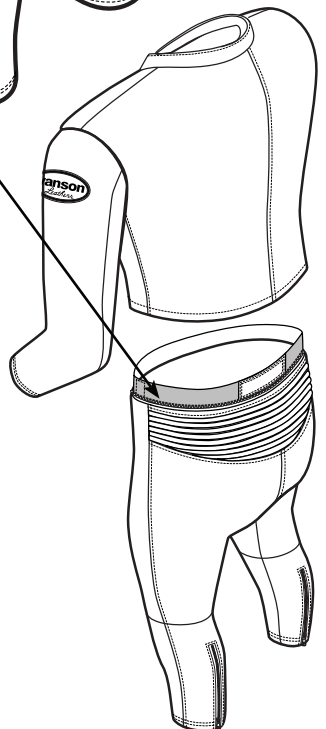
DR2 Men's TWO Piece

Custom Suit
starting from
\$1,499



A. Expanding Waist - Expandable waist with adjustable elastic strap with velcro to give you a perfect fit when pants are not attached to jacket

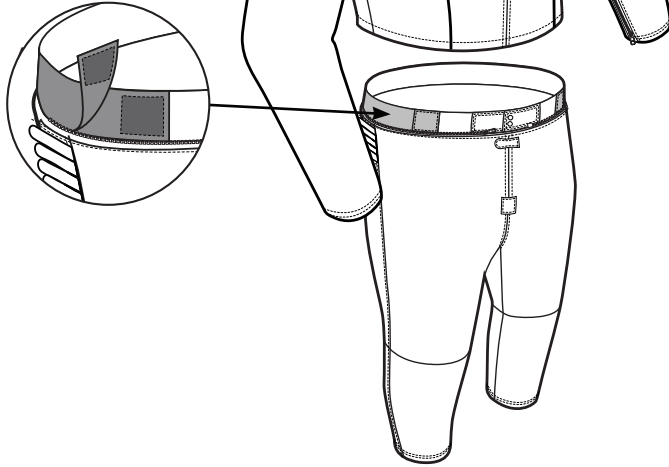
- Mandarin collar, Velcro® closure with Vanson logo embroidery
- License pocket
- D-ring on right sleeve.
- Leather expansion section at back for comfort and freedom of movement.
- Elastic at top of pants for secure fit when worn without jacket.
- Heavy duty front zipper with windflap and license pocket.
- Straight-cut pant legs with slight pre-curved knee and 10" ankle zippers on rear. Sized to fit over boots.
- Nylon mesh lining for comfort and ventilation.



DRL2 Women's Two Piece

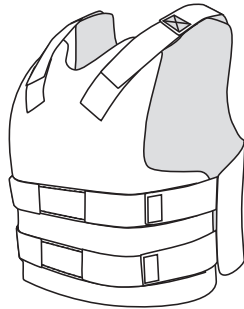
Princess Cut on torso to match women's contour. Identical safety features to men's DR2.

Custom Suit
starting from
\$1,499



NOBL
\$524

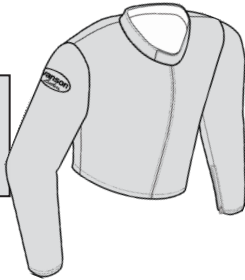
The NoBlast Vest (NOBL) is constructed with 15 layers of Kevlar and Cordura quilted together and positioned to protect the major organs should your engine decide to blow apart. The NoBlast Plate NOBP is a standalone insert of the same construction.



NOBP
\$444

KBLK
\$1,400

Kevlar top for warm weather racing and a more relaxed fit. This can be fitted with armor.

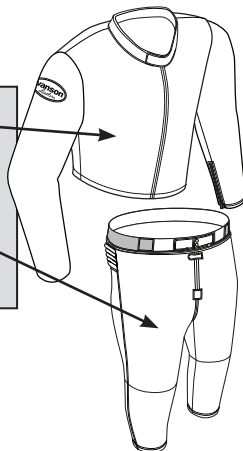


DR2T
\$895

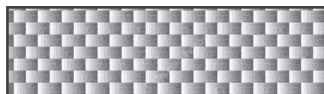
Replacement TOP
of the DR2 or DRL2.

DR2B
\$820

Replacement BOTTOM
of the DR2 or DRL2.



PSHD power shield for destroyer
PSHS standard heat shield
Both constructed raw yellow Kevlar



Select Options Drag Race Suit

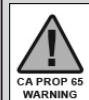
#	Description of option	Price \$
AIR-BAG OPTIONS + PARTS		
CO2 is released using a lanyard-pull trigger system. The CO2 cartridge and trigger are mounted either in a rear Hump or on the right front chest.		
AIRV	Installed system with Hump and Rear Lanyard Trigger	599.00
LOW PROFILE VANTECH CE ARMOR OPTIONS		
Slimline CE Armor using the Floating Armor System (F.A.S.) that allows the armor and garment to have limited slip which improves safety and comfort.		
VA1V	VANTECH F.A.S. CE armor shoulders	39.00 PAIR
VA2V	VANTECH F.A.S. CE armor elbows	39.00 PAIR
VA3V	VANTECH F.A.S. CE armor knees	39.00 PAIR
VA5V	VANTECH hip pads	39.00 PAIR
BACKPADS used for Protection along spine.		
PRO4	Articulated scale back pad - F.A.S. attachment to lining	129.00 EACH
VA4V	VANTECH back pad - enclosed in a rayon envelope for protection. Envelope attaches with velcro to lining + shell	55.00 EACH
INSIDE CLOSED CELL PADDING		
Classic inside padding is closed cell foam backed with mesh or leather. Closed cell foam does not absorb moisture. Several closed cell applications have been superseded by either GP Armor or CE Armor options.		
1A	Elbow Padding - inside Oval football shape	N/A w/armor 25.00 PAIR
1B	Knee Padding - inside Oval shape	N/A w/armor 25.00 PAIR
1C	Spine Padding - inside - approx. 6 in wide	N/A w/armor 40.00
1H	Chest Padding - inside - Dirt Track	60.00 EACH
1I	Bicep Padding - inside - Dirt Track	30.00 PAIR
1J	Shin Padding - inside - Dirt Track	30.00 PAIR
1S	Shoulder Padding - inside - closed cell	N/A w/armor 30.00 PAIR
3	Hip Padding - inside sewn at hip area	N/A w/armor 40.00 PAIR
INSIDE LEATHER PATCH - DOUBLE LEATHER PROTECTION		
4	Full Double seat, inside pants	35.00
4A	Inside leather elbow patches - football shape	30.00 PAIR
4B	Inside leather knee patches	30.00 PAIR
4D	Inside leather elbow/forearm (kidney shape) patches	40.00 PAIR
Wrist zippers must be along inseam as patch interferes		
4E	Inside leather shoulder patches	30.00 PAIR
GRND	POWERSTRETCH + LEATHER - Aramid sandwich at shoulder, elbow/forearm, hips, seat and knee. GRIND is Vanson's own special layers of materials - including ARAMID (Kevlar), nylon and leather	180.00 SET
COLLAR DETAILS		
15A	Mandarin style collar with snap-back tab	25.00 EACH
22	Bound collar - CIRCLE: LEATHER or SPANDEX	25.00 EACH
22A	Velcro security tab across top of front zipper	20.00 EACH
22B	Nehru collar - open at center front	32.00 EACH
EPAULET / BELTS / SUSPENDER OPTIONS		
40A	Suspender buttons - set to waistband of pants - four sets of two buttons each to attach suspenders #40S	25.00 SET
40S	Suspenders - also sold separately - X elastic pattern Four flat leather ends - with 2 Button-Holes each end.	49.00 EACH
JACKET WAISTBAND OPTIONS		
42	Add full circumference leather waistband to jacket. Can be made straight or slightly dipped in the back. Front over-lap is secured by either velcro or snaps. Circle below	80.00 EACH
42	STRAIGHT BACK DIPPED BACK VELCRO SNAP	
2 PIECE SUIT JACKET TO PANTS CONNECTION OPTIONS		
Join a jacket and pants together to make a 2 piece suit. Change waist connection details.		
42O2	Change waist zipper pull direction from Right-to-Left around torso to Left-to-Right for Left-handed riders.	10.00 XTRA
WRIST DETAILS		
Wrist details are very important to achieving the perfect fit with as little bulk as possible.		
1I	Velcro security tabs over the zip pull at wrist and/or ankle zippers. CIRCLE: WRIST ANKLE	20.00 PAIR
14C	Wrist zippers at outseam (under the sleeve) Note: Outseam zippers are old style and may conflict with elbow armor. Wrist gussets included. Old school 1950's style.	15.00 PAIR
4G	Knit cuffs - option used in Dirt Track Suits + Fire Suits CIRCLE: FIRE-SUIT OTHER-SUIT	25.00 PAIR
40L	'D' Ring - Left wrist - for kill switch cord	10.00 EACH
40R	'D' Ring - Right Wrist - for kill switch cord	10.00 EACH

Select Options Drag Race Suit (continued)

#	Description of option	Price \$
	PANT + LOWER LEG + ANKLE DETAILS Pant options for security and comfort	
AS	We use a cut-away in the front of your pant cuff to reduce bulk and restriction when you are tucked in race position.	25.00 PAIR
FIT3	Straight legs - no knee seams	50.00 XTRA
KS	Powerstretch Stirrups at end of pant hem - to hold pants down inside boots.	30.00 PAIR
	LINING OPTIONS Lining options flagged as EACH are for full lining options in addition to the standard linings that come with garment.	
17	Rayon lining	N/C
17X	No lining at all - raw leather interior of shell	40.00 XTRA
CARL	Single layer CARBONX lining instead of standard lining. Carbonx liners give heat and flame protection.	100.00 XTRA
	INSIDE POCKET OPTIONS pockets set to lining - horizontally	
6A	Inside open top pocket set into lining, right side	20.00 EACH
6B	Inside open top pocket set into lining, left side	20.00 EACH
6D	Inside applied leather patch pocket CIRCLE: LEFT or RIGHT	25.00 EACH
	PERFORATIONS ADDED TO SOLID PANELS FOR EXTRA VENTILATION These are larger holes, die cut, farther apart than PROperf This allows the perforation of an otherwise solid leather panel. This is good for areas that need a little extra air flow.	
20A	PERFORATIONS - front - on body under arms	20.00 PAIR
20D	PERFORATIONS - entire upper front chest to waist	60.00 PAIR
20E	PERFORATIONS - waist to crotch - front	35.00 PAIR
20F	PERFORATIONS - on body, behind side seam at under arm area	20.00 PAIR
46	PERFORATIONS - band across upper front chest - arm to arm	35.00 EACH
46A	PERFORATIONS - at bicep - top sleeves - next to inseam	20.00 PAIR
46B	PERFORATIONS - on inner thighs - top legs - along inseam	20.00 PAIR
46C	PERFORATIONS - on back of jacket, along side seams	20.00 PAIR
46D	PERFORATIONS - on rear at side seams - shoulder to waist	35.00 PAIR
	PROperf LEATHER - CHANGE AREAS + PANELS to PROperf PROperf leather is leather that has been machine perforated with small diameter holes spaced closely together. This allows maximum air flow into the garment. PROperf leather is also softer and more flexible as a result of perforating	
20T	PROperf back of leg, calf from knee to ankle	15.00 XTRA
20X	PROperf lower front leg - from knee to ankle	20.00 XTRA
20Y	PROperf knee expanders	20.00 XTRA
20Z	PROperf back expander - allows ventilation and flexibility	20.00 XTRA
46E	PROperf under sleeve panels	20.00 XTRA
46P	PROperf fronts shoulder to thigh seam - (1 piece suit)	35.00 XTRA
46PJ	PROperf fronts shoulder to waistband - (jackets + suits)	25.00 XTRA
	POWERSTRETCH NYLON + ARAMID WOVEN PANELS Powerstretch reduces bulk in the same manner as spandex, but is woven using high strength cordura nylon and aramid to achieve a high resistance to abrasion.	
39AK	POWERSTRETCH Elbow inseam Oval cut-outs	40.00 PAIR
39BK	POWERSTRETCH Behind knees Oval or Band 5 in high across leg	40.00 PAIR
39DK	POWERSTRETCH Knees to Ankle - Keyhole shape cut-out	50.00 PAIR
39FK	POWERSTRETCH Elbow/Forearm - Keyhole shape cut-out	50.00 PAIR
39HK	POWERSTRETCH 1 in strip Wrist to Armhole along sleeve inseam	50.00 PAIR
39IK	POWERSTRETCH 1 in strip along inseam - Crotch to mid-thigh	75.00 PAIR
39VK	POWERSTRETCH Full VELOCITY options - (suits only) Competition design @ arms/legs/crotch and across upper thigh	135.00 SET
40PS	POWERSTRETCH PRO-STOCK - Arms, Legs, and Crotch	250.00 SET
40VK	POWERSTRETCH VELOCITY 2 piece suit - Arms, Legs, and Crotch	175.00 SET
KC	Kevlar Cuffs replaces leather at your wrists to reduce bulk in your gloves. The cuff is 1.50 in high.	35.00 PAIR
	EXPANDER PANEL OPTIONS Expander panels are generally made using PROperf leather or Medium weight Firenze leather to make the expander sections as soft, comfortable and flexible as possible.	
ELEX	Elbow Expanders allow free bending at your elbow and reduces the pulling down on your shoulders. CIRCLE: HEAVY-MESH(check tech for ok) SOLID-LEATHER PROperf	50.00 PAIR

#	Description of option	Price \$
	EMBROIDERED LOGO + SPONSOR PATCHES Personalize your suit with special patches.	
23	Velcro sewn in square on back to accept #24 (Leather Patch) Square Size approx. 12 in wide x 12 in high (velcro pile) Old School. Vintage.	25.00 EACH
24	Square of leather with strips of velcro to mate up with #23 Square Size approx. 12 in Wide x 12 in High.(Velcro hook) Specify color, price does not include letters & numbers.	30.00 EACH
26	Sewing on Sponsor Patch(es) provided by customer covered in clear plastic to help keep patch clean. Cost is per patch.	10.00 EACH
26B	Sewing on patch - no cover	8.00 EACH
26C	Chenille VANSO patch - Classic script with flowing "V" Patches are handmade and are approx 13 in to 15 in long x 8 in high	60.00 EACH
26D	VANSO STAR - two color approximately 1 1/2 in outline Approximate sizes CIRCLE: 15.5 in Wide x 13.75 in High 13 in Wide x 11.75 in High - 10.75 in Wide x 10 in High	49.00 EACH
26E	RED, WHITE and BLUE - U.S. FLAG Patch - Embroidered by Vanson. Placed on shoulders - always set with star field facing forward. Show location in section 4.	20.00 EACH
26F	BLACK/GREY - First Responder - U.S. FLAG Patch Embroidered by Vanson. Placed on shoulders - always set with star field facing forward. Show location in section 4.	20.00 EACH
26P	U.S. Flag - leather patch (approx. 12 in x 8 in) 100% leather flag with full 50 star field sewn to back	89.00 EACH
26R	Leather crossed VICTORY checkered flags - sewn on back	85.00 EACH
26S	Leather VICTORY checkered flag - small for chest/shoulder/glove	60.00 EACH
26T	Reflective VANSO Oval (rubber Oval) Specify location and number in section 4.	N/C
26TA	VANSO Competition Oval(s) (vinyl) Specify location and number in section 4.	N/C
26TE	Standard Cloth Embroidered VANSO Oval Specify location and number in section 4.	N/C
26TL	Leather embroidered VANSO Oval - specify colors Specify location and number in section 4.	25.00 ACH
26V	VANSO V in a circle - vintage Vanson logo from 1974 Circle is 3.25 in in diameter. Used for chest and shoulders	25.00 EACH
26VV	VANSO V - vintage Vanson logo from 1974 V is 1.50 in Wide x 2.25 in High. Used on chest and shoulders.	20.00 EACH
DVO	Delete VANSO Ovals	100.00 EACH
	VANSO LOGO LETTERING Traditional Vanson logos developed for competition leathers	
10	VANSO extra logo-chargeable - show locations in section 4.	15.00 EACH
10BA	Sized to fit - VANSO - across butt of suit or pants.	15.00 EACH
10BB	Sized to fit - VANSO - across lower back.	15.00 EACH
10BC	Small VANSO embroidered on both ends of collar.	N/C
10BF	Small VANSO stitched to top sleeves along forearm	PAIR
10BS	Small VANSO letters stitched to under sleeves	30.00 PAIR
10BT	Sized to fit - Vanson - stitched to thighs.	30.00 PAIR
10BV	Small VANSO stitched around lower knee puck velcro field	30.00 PAIR
10F	Sponsor Credit for placing additional "VANSO" on garment	-30.00 N/C
	HUMP OPTIONS Humps were developed to fill in the void behind the helmet and thereby streamline the rider profile. Humps also serve to hide and protect gear such as Air-Bag mechanisms, radios and water camel systems.	
HUMV	SLIPSTREAM Hump enhanced with flow through ventilation system from the front of the Hump through airways into the back of the garment.	190.00 EACH
	HEAT SHIELDS AND HEAT PROTECTION Heat shield options. Automotive and Motorcycle race suits.	
	Top Fuel / Pro Fuel	
HBV	Hangers for ballistic panels allow panels to attach with velcro and hang in front of the chest area	40.00
PSHD	Thermal protection added to right leg + knee as heat shield	210.00 EACH
PSHS	Thermal heat shield added to leg for protection. CIRCLE: LEFT-LEG RIGHT-LEG (H-D)	190.00 EACH

TOTAL OPTIONS \$



CALIFORNIA PROP65 WARNING: This product can expose you to chemicals, substances and materials known to the State of California to cause cancer and birth defects or other reproductive harm.

ADVERTENCIA: Este producto puede exponerlo a productos quimicos, sustancias y materiales que el estado de California reconoce como causantes de cancer y defectos de nacimiento u otros danos reproductivos.