

Custom Order Design & Measurement Guide



Quality...from Professionals...for Professionals!

Vanson Leathers understands professional racers. They depend on premium quality protective garments, fast knowledgeable service and styles and graphics to showcase the racer and his or her sponsors.

Vanson Custom Suits are made from top-grain U.S. cowhide approximately **3 1/2 oz.** per square foot and **1.4 -1.7 mm**. We are constantly developing new features and experimenting with new materials. This ensures that we can offer the best product and service to professional riders. Vanson offers a complete "menu" of options and lettering styles to choose from, allowing you to design the suit you want.

How to use this Form

Select the **Style** of suit based on the standard features which meet your racing needs. For each Style, there is a list of available **Options**. These Options are available at an additional cost to the base price of the suit. Select the **Style** then the **Options**. Next, you can **Draw Your Own Design** or choose from the many standard **Graphic** designs we have provided for you. Color selections can be made from Vanson's wide selection of drum-dyed colors.

Sample leather color swatches are available upon request. Remember, you can change colors at any seam line for **no extra charge!** To add a personalized touch to your custom suit use the **Lettering and Logos** section.

Note: Foils and Special Effects leather cost 15% more. Be sure to show the placement of any custom lettering in the spaces provided. Then, using the special **Vanson Measuring Device**, complete the **Take Your Measurements** section. Be sure to follow the directions carefully and fill out all the measurements in this section. In order to verify your measurements, it is **required** that you include your **Height, Weight, and Age**.

Finally, turn to page **20** of the form and complete your order by filling out the **Shipping Information** and adding the cost from each section to determine the **Total Cost** of your suit.

The Proof is in the Patents

Buying a Vanson suit is purchasing a unique piece of leather working history. Over the years, as we have developed our own, unique way of producing a better quality garment we've come up with entirely new concepts for our riders. As these innovations have been discovered and perfected, they have been patented.

Currently **Vanson holds over 10 unique patents**. These cover everything from the way we set the zippers in our garments for our venting system to our Floating Armor System. Carefully designed for your comfort and safety when working with our superior materials, we always seek to innovate without sacrificing the longevity of our suits.



Custom Racing Suits • Experience the best!

Vanson Leathers, Inc.

951 Broadway, Fall River, MA 02724

Phone (508) 678-2000 • Fax (508) 677-6773

E-Mail: vanson@vansonleathers.com

Web Site: www.vansonleathers.com






Download Printable
Version



View Online
Flip Book Version

Vanson Suit Tree:

(#) Designates 2 piece suits - all with full circumference waist zipper
 *Ready made Suits not available as a custom order. Call for more information.

		Custom	Off-the-Rack
MK4 suits (with armor) <i>Professional Road Racing, side car</i>		V093 double front zipper suit VE93 VL93 V942 (#) ladies available	
Drag Race <i>Drag Racing, Dirt Track, Snowmobile Racing</i>		DR1 ladies available DR2 (#) DRL2 (2#)	Drag (#)* (sizes 34-54)
Super Motard (with armor) <i>Super Motard Racing, Dirt Tracking, Vintage Road Racing</i>		SM02 ladies available SM22 (#) ladies available	1 piece only (sizes 34-54)
Traditional (extra leather) <i>Vintage Road Racing, Long Boarding, Dirt Tracking</i>		RR1 ladies available RR2 ladies available	
MK2 suits with armor <i>Road Racing, Dirt Tracking, Long Boarding, Side car Racing</i>		RR12 ladies available RR22(#) ladies available	
Street & Track <i>Track Days, Sport Riding</i>		STRC (#) ladies available	
HYBRID - suit with Hump and CE F.A.S. armor Not Available in Custom		HYB1*	(sizes 34 54)
HYBRID - suit with Hump, CE F.A.S. armor and AirPro Airbag Not Available in Custom		HYBA* AirPro Airbag is standard with this suit Trigger assembly located in the hump	(sizes 34 54)
Garage Suit <i>General Wrenching, Everyday Riding</i>		VNV6 ladies Available	VNV6 (sizes 34 54)
Car Suit <i>Professional Car Racing, Kart Racing</i>		FD01, FD05 - Double-Zip FS01, FS05 - Single-Zip FP01, FP05 - Pants FJ01, FJ05 - Jacket	(sizes 34 54)



AirPro - airbag option

All suits marked with this icon can have our AirPro airbag added to your order.

PRODUCT DISCLAIMERS



CALIFORNIA PROP65 WARNING: This product can expose you to chemicals, substances and materials known to the State of California to cause cancer and birth defects or other reproductive harm.

ADVERTENCIA: Este producto puede exponerlo a productos quimicos, sustancias y materiales que el estado de California reconoce como causantes de cancer y defectos de nacimiento u otros danos reproductivos.



VANSON RACING SUIT DISCLAIMER - Motorcycle sports are inherently dangerous and involve the risk of serious injury or death. Riders using these products ride at their own risk with full knowledge of the hazards and risks associated with their activities. Racing suits cannot offer complete protection from injury or death to riders. Racing suits cannot protect areas of the body that are not covered and offer no protection against injuries involving forces other than impact. CAUTION: Body Protectors (Vanson GP F.A.S. armor and CE approved armor) must fit properly and be securely fastened. Racing suit components that are damaged should be destroyed and replaced.



VANSON'S AIR-PRO AIRBAG SUIT DISCLAIMER - Motorcycle sports are inherently dangerous and involve the risk of serious injury or death. Riders using these products ride at their own risk with full knowledge of the hazards and risks associated with their activities. AirBag suits cannot protect areas of the body that are not covered and offer no protection against injuries involving forces other than impact. CAUTION: Body Protectors (Vanson GP F.A.S. armor and CE approved armor) must fit properly and be securely fastened. AirBag components that are damaged should be destroyed and replaced. The protective properties of AirBag suits may be compromised by prior impact, age, and other substances.



VANSON MOTORCYCLE ARMOR DISCLAIMER - Motorcycle Sports are inherently dangerous and involve the risk of serious injury or death. Riders using these products ride at their own risk with full knowledge of the hazards and risks associated with their activities. Armor cannot offer complete protection from injury or death to riders. Motorcycle Armor cannot protect areas of the body that are not covered and offer no protection against injuries involving forces other than impact. CAUTION: Body Armor Protectors (Vanson GP F.A.S. Armor and CE approved Armor) must fit properly and be securely fastened. Armor components that are damaged should be destroyed and replaced.

Design Suggestions & Standard Designs

Graphic design shown here are additional to the cost of the suit. Call [508]678-2000 for pricing and other choices. Please Note: representation of these designs may have to be varied dependent on the suit type and the options you choose to have included in you suit.



F11B - BURNING FIELD FLAMES



F11F - CROWN FLAMES BODY



F11M - FLAME MOUNTAIN



F11S - CROWN FLAMES (TOP SLEEVE AND/OR ANKLE)



F12S - TATTOO SLEEVE OR LEG ACCENT



F13B - ART-DECO BODY FLAMES



F4 - BODY INLAY FLAME SET



F13C - ART-DECO WRIST OR ANKLE MOTIF PAIR



F13S - ART-DECO TOP SLEEVE FLAME SET



F14A - HOT-ROD DEVIL WINGS ACCENT



F14B - HOT-ROD BODY FLAME



F15S - DEVIL TAIL FLAMES



F16B - GRASS FIRE FLAMES



F6B - FIREBALL BODY FLAME STRIP



F16E - GRASS FIRE LONG FLAMES



F16W - WISPY GRASS FIRE FLAMES



F16R - GRASS-FIRE HALF SLEEVE FLAMES



F16S - GRASS-FIRE SLEEVE/ANKLE FLAMES PAIR



F16T - FLOATING BLOWTORCH FLAME



F6T - FIREBALL FLAME



F18S - OIL-PATCH FLAMES SLEEVE/LEGS



F18B - OIL-PATCH FLAME - BODY



F19B - SMOKEY MOUNTAIN BODY FLAMES



F19S - SMOKEY MOUNTAIN FLAMES



F20B - RAGING FLAMES ON BODY



F20C - TALLRAGING FLAMES - BODY



F20S - RAGING FLAMES



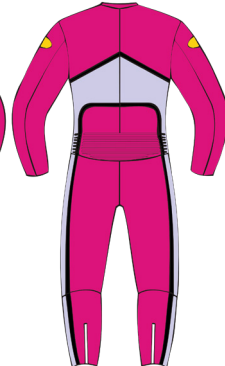
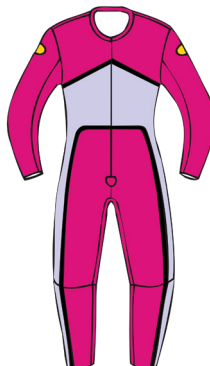
9500
\$300.00



10769
\$300.00



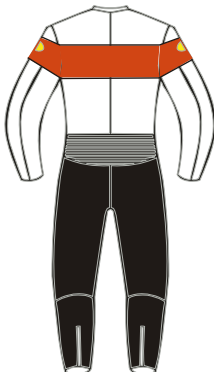
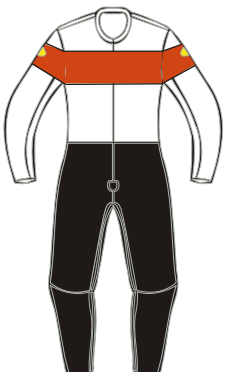
10553
\$275.00



17344
\$150.00



10297
\$550.00



10170
\$200.00



9254
\$100.00



10918
\$550.00

For information on stripe options and pricing, see "Stripe Style" section.



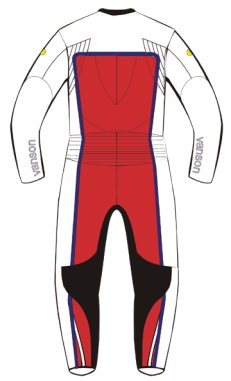
10821
\$275.00



10689
\$275.00



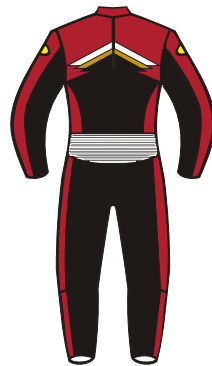
10647
\$225.00



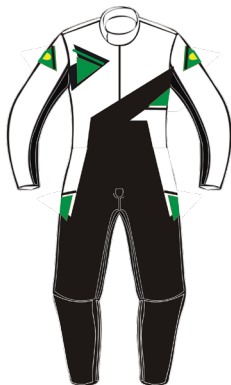
10542
\$400.00



10303
\$225.00



10174
\$400.00



18268
\$225.00



9309
\$300.00

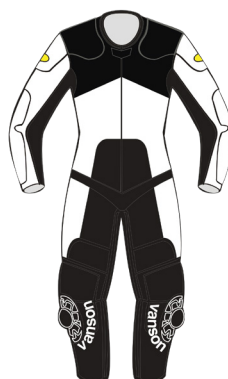
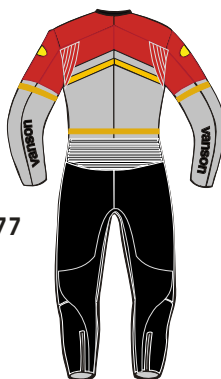


7936
\$300.00



10277

10277
\$290.00



17754
\$150.00



7613
\$185.00

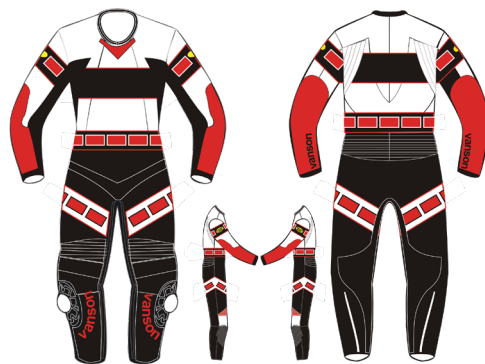




10082
\$250.00



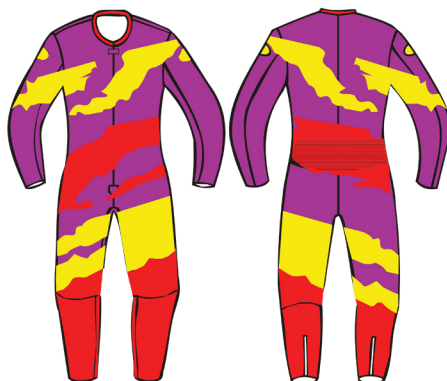
BONE
\$1000.00



18300
\$600.00



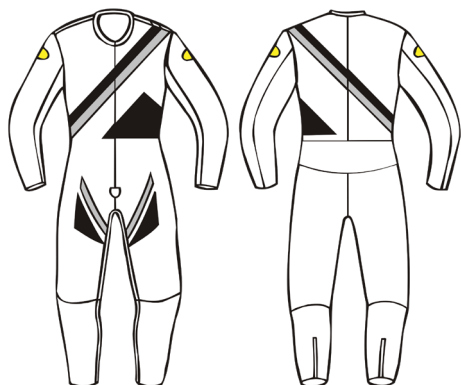
17754
\$150.00



9010
\$400.00



7832
\$550.00



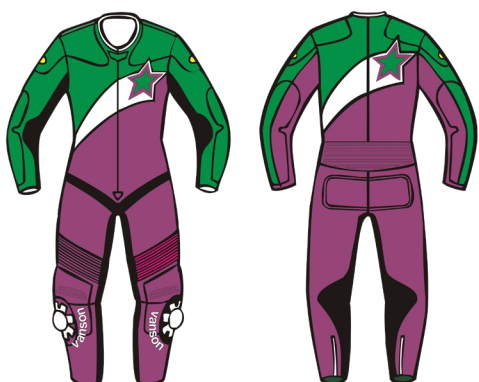
7684
\$150.00



17936
\$114.00



7936
\$300.00



7650
\$300.00



7623
\$150.00

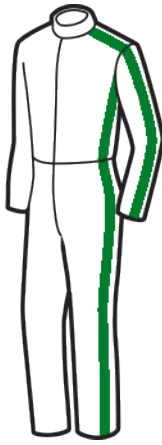


7612
\$275.00

Stripes



A - Both Arms



B - Arms & Sides



E - Both Legs



G - Armpits to Ankles



H - Racing band front or back



I - Both Arms

Stripe Style	Location on Suit (see diagrams to left)					
	A	B	E	G	H	I
1 - Single, 1 inch stripe	\$40.00	\$80.00	\$40.00	\$55.00	\$40.00	\$20.00
2 - Twin, 1 inch stripe	\$75.00	\$150.00	\$75.00	\$90.00	\$80.00	\$37.50
3 - Triple stripe 2 color	\$99.00	\$198.00	\$115.00	\$114.00	\$110.00	\$49.50
4 - Two inch stripe	\$40.00	\$80.00	\$40.00	\$55.00	\$50.00	\$20.00
5 - Three inch stripe	\$40.00	\$80.00	\$60.00	\$55.00	\$60.00	\$20.00
6 - Two Inch Checkered stripe	\$99.00	\$198.00	\$99.00	\$114.00	\$99.00	\$50.00
7 - Three Inch Checkered stripe	\$125.00	\$250.00	\$125.00	\$140.00	\$125.00	\$60.00
8 - Three Inch Stars	\$99.00	\$198.00	\$99.00	\$114.00	\$99.00	\$50.00
9 - Three Inch Long Diamonds	\$99.00	\$198.00	\$99.00	\$114.00	\$99.00	\$50.00

Stripes Total \$

Stripe Matrix

Choose stripe pattern you want and location.
Example: **A4=2** inch (#4) going down arms (**A**).

Cost \$30.00 Non standard widths are priced as next widest standard stripe. Stripes over 3" wide are an "inlay" see previous page for costing.

Note: 3M® Reflective tape is offered in any stripe or pattern design as long as it can be done. This is a difficult material to work with.

Note: Foils and Special Effects leather cost 15% more.

Inlays & Inlay Designs

Inlays are stripes over 3 inches in width. Inlay Designs are those color separations that require seam lines in addition to the basic seams (shown on the diagram). Symmetrical Inlay (side to side symmetry) are priced as \$100.00 top and \$100.00 bottom. Asymmetrical Inlays (no symmetry side to side) are \$150.00 top and \$150.00 bottom.

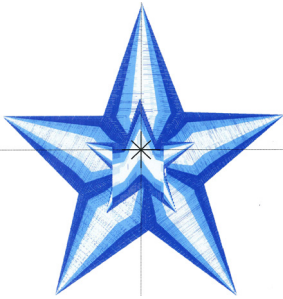
Top Inlay Total \$	_____
Bottom Inlay Total \$	_____
Total For Inlays \$	_____

Sponsor Patches

Front	Back	Left Side	Right Side

Embroidery

Create your own design or choose from one our in house embroidery graphics. If you decide to create your own just send us an image of your art and what size you would like it to be and we will figure out what the stitch count and send you the price to embroider it. Embroidery prices are based on stitch count (\$2.50/1000 stitches).



X016-Star within Star
9102 stitches
\$40.00

vanson

X032-Vanson for BUCV

22217 stitches

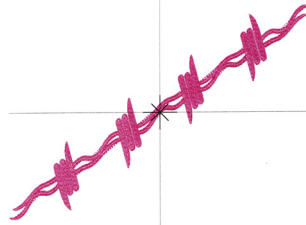
\$35.00



X033-Vanson for Sleeve

12244 stitches

\$20.00



X012-Barbed Wire

40057 stitches

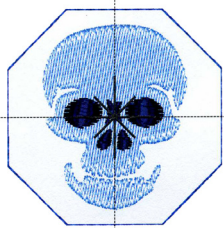
\$35.00



X004-Made in USA

15655 stitches

\$40.00



X005-Head Skull

12244 stitches

\$45.00



X038-Especially Handmade

5636 stitches

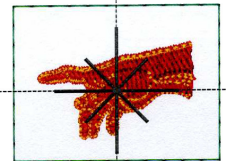
\$25.00



X036-Name Number

5721 stitches

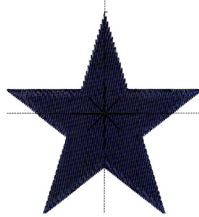
\$10.00



X020-Hand of God

1568 stitches

\$40.00



X013-Star

2164 stitches

\$20.00



X015-Spade

34940 stitches

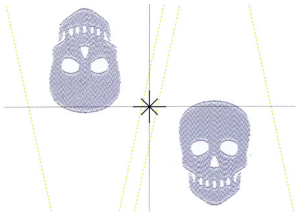
\$40.00



X037-Monogram

4349 stitches

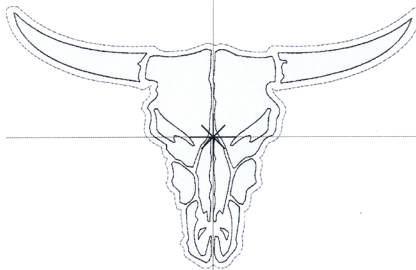
\$15.00



X0009-Skull Gusset

12244 stitches

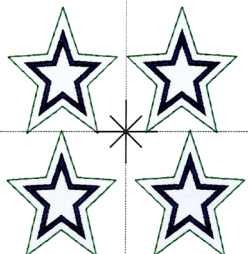
\$40.00



X014-Cow Head

1893 stitches

\$45.00



X023-X-Small Star

2307 stitches

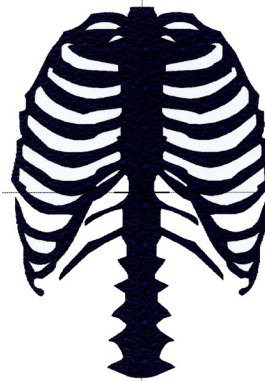
\$15.00



X030-Large Vanson Oval

26608 stitches

\$45.00



X029-Bones for Wallet

28442 stitches

\$30.00



X039-hand Made Patch

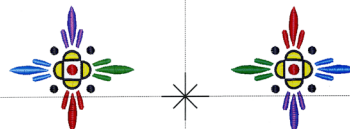
\$25.00



X011-Army of Darkness

33862 stitches

\$40.00



X003-Tribal Flower

6083 stitches

\$45.00









X008-Americana Boy

77973 stitches

\$40.00

Patch Designs

A - \$20.00/patch

- ☐ 1 
- ☐ 2 
- ☐ 3 
- ☐ 4 
- ☐ 5 
- ☐ 6 

B - \$30.00/patch

- ☐ 1 **VANSON**
- ☐ 2 **vanson**
- ☐ 3 **vanson**
- ☐ 4 **vanson**
- ☐ 5 **VANSON**
- ☐ 6 **VANSON**
- ☐ 7 **バンソン**
- ☐ 8 **VANSON**
- ☐ 9 **vanson**
- ☐ 10 **vanson**
- ☐ 11 **vanson**
- ☐ 12 **VANSON LEATHERS**
- ☐ 13 **vanson**
- ☐ 14 **ヴェネツス エヌワイシー**
- ☐ 15 **vanson leathers, Inc.**
- ☐ 16 **VANSON LEATHERS**
- ☐ 17 **vanson leathers**
- ☐ 18 **Vanson**
- ☐ 19 **Vanson LEATHERS**
- ☐ 20 **VANSON**

C - \$35.00/patch

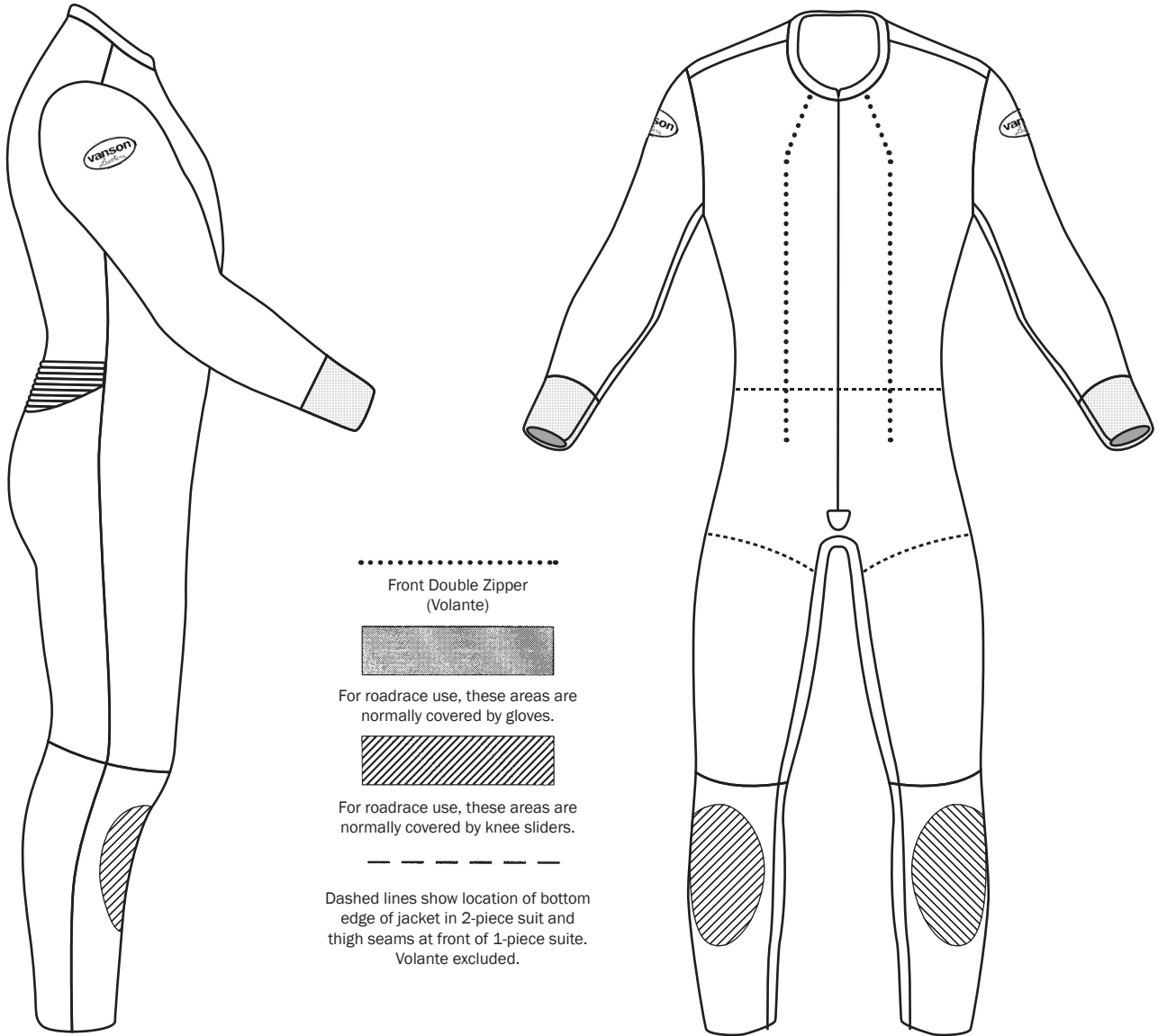
- ☐ 1 
- ☐ 2 
- ☐ 3 
- ☐ 4 
- ☐ 5 
- ☐ 6 
- ☐ 7 
- ☐ 8 
- ☐ 9 

D - \$50.00/patch

- ☐ 1 
- ☐ 2 
- ☐ 3 
- ☐ 4 
- ☐ 5 
- ☐ 6 **No Compromises**
- ☐ 7 
- ☐ 8 
- ☐ 9 
- ☐ 10 
- ☐ 11 

Draw Your Own Design

Sketch suit design and show where any letters or numbers go. Show location of selected options such as sponsor patches and pockets. In addition to this section, fill in if letters and numbers are part of your design. After reviewing design, we will advise you of the cost.



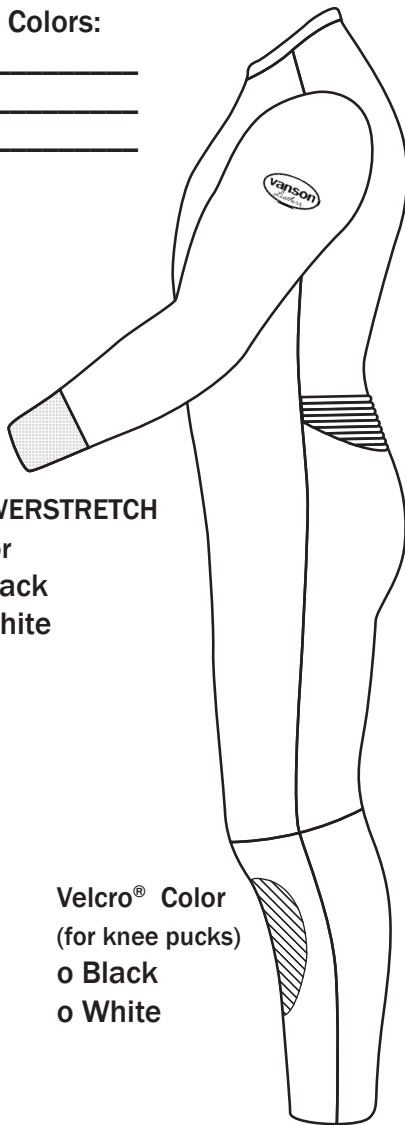
DESIGN AND STRIPE NOTES: Use these lines for any notes that may help our design department interpret your design. You will be advised of cost after we have reviewed it.

NOTE: Changes to your order after we have received it may affect our scheduling. Changes made after certain production steps may also incur extra charges.

Embroidery Color
Vanson on Mandarin
 collar:

Color: _____

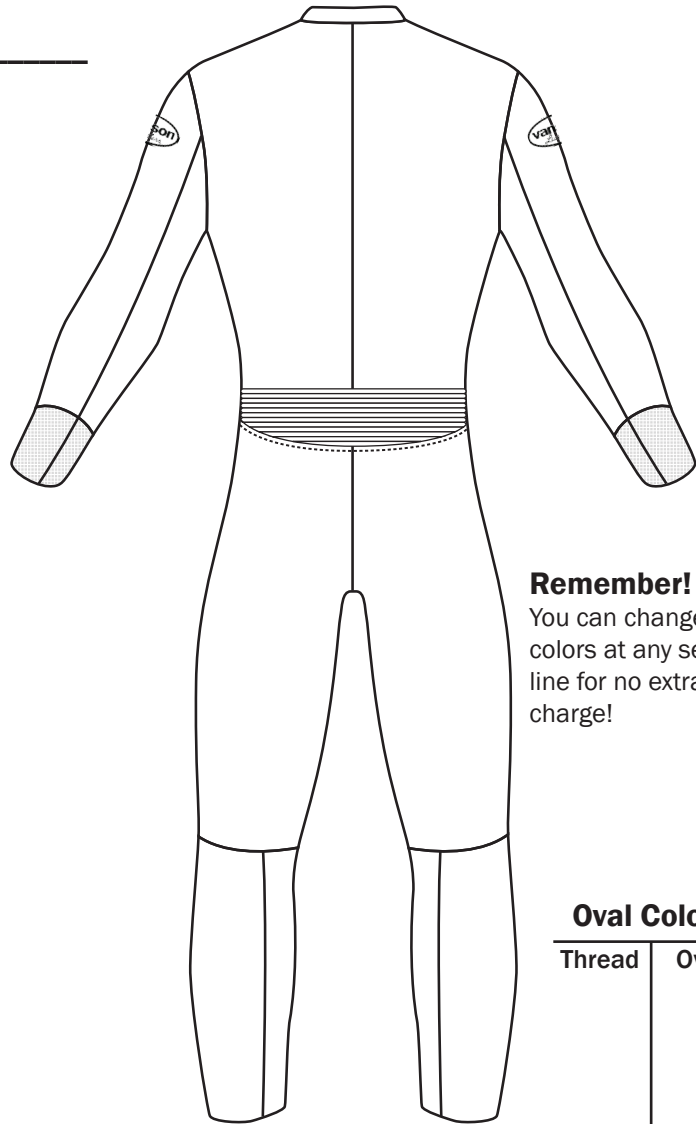
Suit Colors:



POWERSTRETCH

Color
☐ Black
☐ White

Velcro® Color
 (for knee pucks)
☐ Black
☐ White



Remember!

You can change colors at any seam line for no extra charge!

Oval Colors

Thread	Oval

Additional Comments or Information?

If there is any additional information or comments that you think could help us more clearly create your design please write it beneath this box.

Letters & Numbers [Types and Sizes]

Choose Type & Style. Fill out the correct section below. Mark on diagram the location and direction the word[s] are to be read. Sizes shown are used as a guide only. Letters are sized to fit the design and pattern based on your specifications.

Types of Letters and Numbers			Sizes of Letters and Numbers			Lettering Type - Embroidered		
The letters in the boxes after the examples are to identify the TYPE	PLAIN	P	2" \$7 ea	3" \$8 ea	8" \$10 ea	<u>Size</u>	<u>Plain</u>	<u>Outline</u>
	OUTLINE	O	2" \$11 ea	3" \$13 ea	8" \$17 ea	2"	=\$6 ea	=\$12 ea
	SHADOW	SH	2" \$11 ea	3" \$13 ea	8" \$17 ea	3"	=\$8 ea	=\$16 ea
	SLOPING	S	2" \$7 ea	3" \$8 ea	8" \$10 ea	4"	=\$10 ea	=\$20 ea
	SLOPING OUTLINE	SO	2" \$11 ea	3" \$13 ea	8" \$17 ea	Total Cost of all options and services on this page.		
	SLOPING SHADOW	SS	2" \$11 ea	3" \$13 ea	8" \$17 ea	\$ _____		

*Carbon X® is a Registered Trademark of Chapman Thermal Products

Note: If you are ordering OUTLINE, SHADOW, SLOPING OUTLINE, or SLOPING SHADOW write the primary [or main] color FIRST followed by the color of the outline or shadow.

Styles of Letters and Numbers			
BANCO	CANCUN	FUNHOUSE	<i>Brush Script</i>
BALLOON	CHOPHOUSE	FUTURA	SERPENTINE
BEACH HOUSE	COOPER	GINKO	SQUARE
BLOCK	COSMIC	OLDTOWN	STACCATO
BREMEN	EXPO	REVUE	TIMES ROMAN
			TIMES SCRIPT
			TRANSROBOT

***Available in CAPITALS only. Additional fonts available. send sample - we will match as closely as possible.**

Type	Size	Style	Wording	Color(s)	Location	Total \$	Total no. of letters

Numbers and letters TOTAL \$

Take Your Measurements

General Instructions:

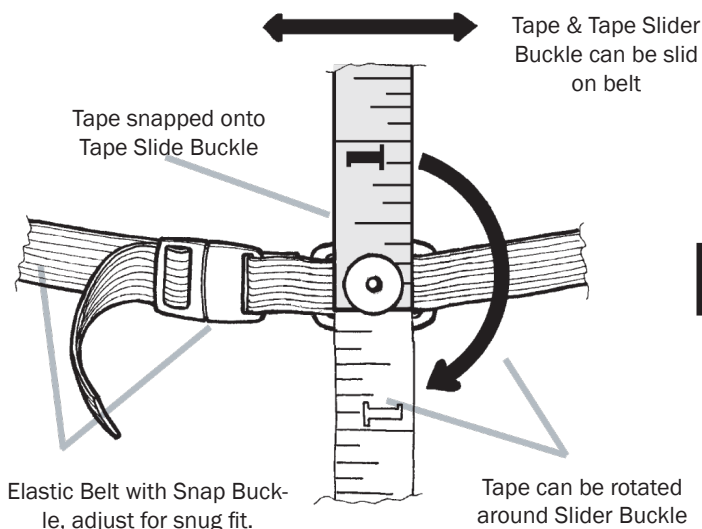
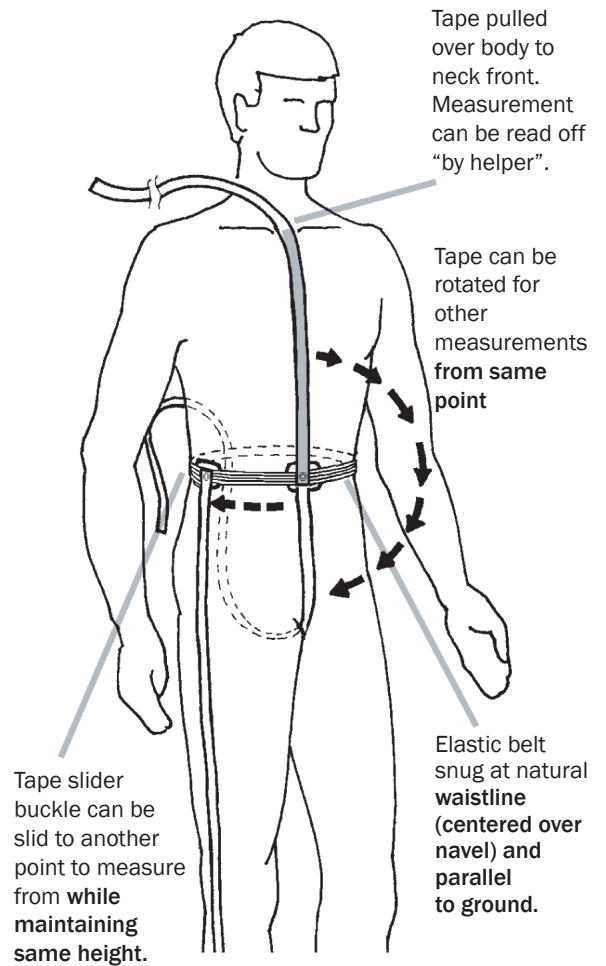
- **Never measure yourself.** Get someone else to help you.
- For taking measurements, wear jeans that fit you comfortably but snugly and a t-shirt. Empty contents of pockets. Pull up pants for snug fit. Remove belt.
- On measurements involving the waist or “VMD Waist” use **Vanson Measuring Device** (see below). **Another tape will also be required** for measuring.
- Pull tape measure snug **DO NOT allow extra** in your measurements.
- Vanson race suits are purposely designed for comfort and ease of movement in **the race position**. They are designed to be worn over minimum clothing. They may not feel comfortable while standing or walking. **They are not designed for touring or pedestrian use.**

How to Use the Vanson Measuring Device

- This device is designed to assist you in obtaining consistent measurements.
This is of utmost importance in order for us to make your suit fit as it should. Use on measurements marked **6**.
- Secure the **elastic belt** part of the device around waist at **navel**. Make sure **belt is parallel to ground**.
- The elastic should be a snug fit so it does not move up and down easily when you rotate the **tape** or slide the **tape slider buckle**.
- You can now snap the tape to the tape slider buckle.
- Have someone run the tape over your body to the point you need to **measure to**, then write down the measurement.
- Rotate tape for other measurements that **are from the same point**. For other **measure from points**, slide tape slider buckle.

Make sure elastic belt does not move accidentally during measuring process.

If you have questions, call Vanson's help line
(508)678-2000



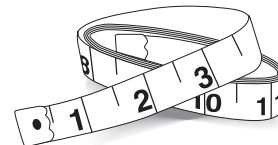
Vanson Measuring Device

Make your own VMD

- 1 String/Elastic that will stay in place around waist at navel



- 1 Measuring tape



Make sure the band or string around the waist is parallel to the ground (periodically check throughout measurements). Make sure to take measurements along the string or band from the same points each time.

Section A
Circumferences

NECK 1

UPPER CHEST* 2
Across front over protection

CHEST* 3
Around fullest part over protection
Put on VMD

WAIST* 4
At navel, VMD belt is parallel to the floor. over protection

BELTLINE* 5
at top of pants over protection

HIPS* 6
Around fullest part over protection
Mark outseam

THIGH 7
2" below crotch Mark outseam

KNEE CIRCUMFERENCE 8
With leg straight Mark outseam

CALF 9
Around fullest part

OVER BOOT YES ☐ NO ☐

ANKLE* 10
Around at anklebone OVER BOOT YES ☐ NO ☐

11 BICEP
With muscle flexed around widest part.

12 FOREARM
Make fist then measure

13 WRIST
Around wrist bone

NOTE:
Jacket Length
Our jackets are cut to the Belly Button (location B).
If you prefer a longer cut jacket refer to **page 16** and fill in the measurements of **steps 57, 58, and 59.**

Remember!



VMD - WAIST

This is an indicator showing where the elastic band from the Vanson Measuring Device rests (at the navel and parallel with the ground). Put this device on **AFTER** you complete measurement #3.



CHECKERED BOX

This is used when you are doing your second measurement over your armor or brace

Legend

A. Neck Hollow of neck at the stop of sternum

B. VMD-Waist Waist at navel where you have the VMD - parallel to floor

C. Crotch Pants seam intersection

D. VMD-Waist Back Middle of back where waist and spine meet

E. Nape Of Neck Bone that protrudes from the back of your neck

F. Beltline Front Center of the beltline in front of pants

G. Beltline Back Center of the beltline in back of pants

I. Hips Widest part of hips. Mark on outseam with tape.

J. Thigh 2" Below crotch Mark on outseam with tape.

K. Knee Middle of knee cap

L. Ankle At ankle bone

M. / N. Shoulder Outermost point of shoulder bone

O. Wrist Outer bone on wrist (pinky side)

Section B
Vertical/Horizontal

WAIST TO HIPS 14 B ↓ I outseam

WAIST TO THIGH 15 B ↓ J outseam

WAIST TO MID KNEE 16 B ↓ K outseam

OUTSEAM 17 B ↓ L outseam
Waist to anklebone

KNEE TO ANKLEBONE 18 K ↓ L

19
#17 - #16 = #18
#18 should = #19

20 WRIST TO INNER ELBOW
At crease

21 CROTCH TO MID-KNEE
At inseam

22 INSEAM C ↓ L inseam
To inner anklebone (pull pants up snug before measuring).

23
#23 = #22 - #21
#23 should = #18

Suit Measurements

Contact Information

Date ____ / ____ / ____

Name _____ Email _____

☐ MALE ☐ FEMALE Height _____ Weight _____ Age _____

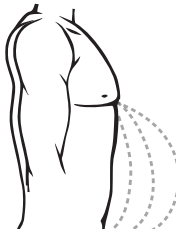
1. Are you a bodybuilder? NO ☐ YES ☐
2. Are there any existing physical conditions that should be allowed for in the fit of this suit? If Yes, describe.

3. Are you measuring over any braces/armor? If Yes, describe.

4. What brand/model spine pad do you wear?

5. What type of belly do you have?
Please circle the one that best fits you.

FLAT MEDIUM LARGE EXTRA LARGE



Note: DR2 suit only - circle one: TIGHT SNUG COMFORT

RIDING POSITION DRAG RACE

☐ Upright ☐ Race Tuck ☐ Laydown

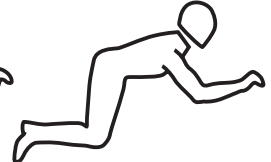
RIDING POSITION - STREET OR ROAD RACE

☐ Super Sport ☐ 250 GP ☐ Sidecar

HANDLEBAR POSITION - CHECK ONE

☐ Drag Bars ☐ Clip-Ons ☐ Low Rise Bars

☐ RACE TUCK ☐ EXTREME TUCK ☐ LAYDOWN



ATTENTION!

WARNING: If your measurement checks are off, your suit will not fit correctly. These checks will take much less time than waiting for adjustments to be made. Help us eliminate unnecessary fit issues by providing accurate measurements.

IMPORTANT: Please send us **THREE** clear full length photos with the measuring device around your waist.
One full frontal, one side profile, one rear with arms at side.

NOTE: Measure your body, then if you are wearing gear (back brace, knee brace, etc. then measure while wearing your brace(s).
Write in any open space with a note describing your gear and anything that will help us provide you with the best fit.

MUST BE WEARING A PAIR OF GOOD FITTING JEANS AND A T-SHIRT!

IF YOU HAVE QUESTIONS CALL 508-678-2000

MAKE SURE ELASTIC BELT (VMD) DOES NOT MOVE

MEASUREMENTS TAKEN BY: _____

GUIDE KEY

Check if completed

SECTION A. ____

SECTION B. ____

SECTION C. ____

SECTION D. ____

SECTION E. ____

SECTION F. ____

GUIDE KEY

Specific

SECTION G. ____

SECTION H. ____

REMEMBER !



VMD - WAIST

This is an indicator showing where the elastic band from the Vanson Measuring Device rests (at the navel and parallel with the ground). Put this device on **AFTER** you complete measurement #3.



CHECKERED BOX

This is used when you are doing your second measurement over your armor or brace



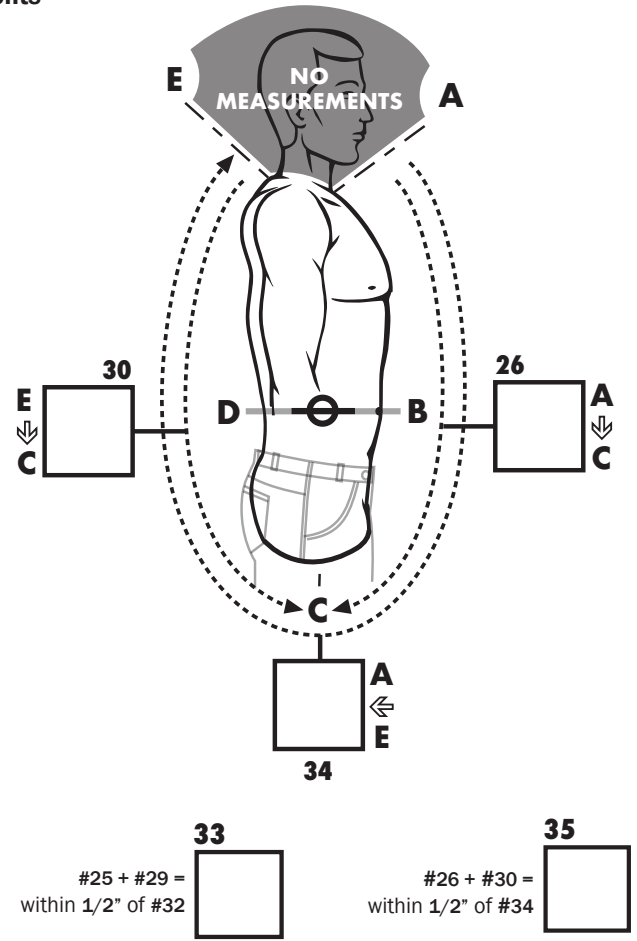
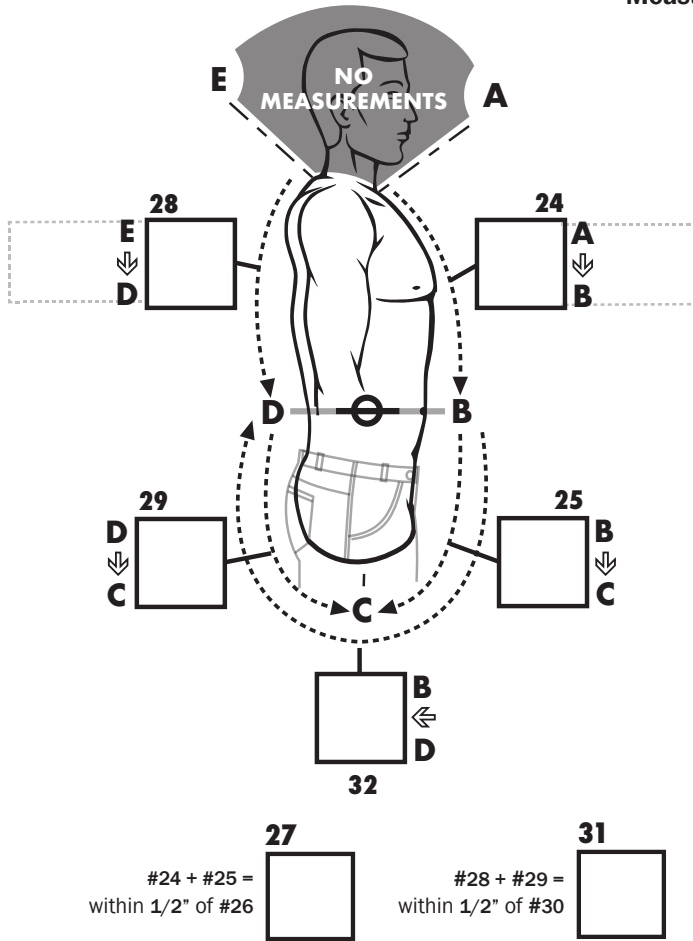
100% MADE SOLD AND SERVICED IN THE U.S.A.

WITH CORRECT MEASUREMENTS AND EQUATIONS WE OFFER A
100% GUARANTEED FIT

Section C

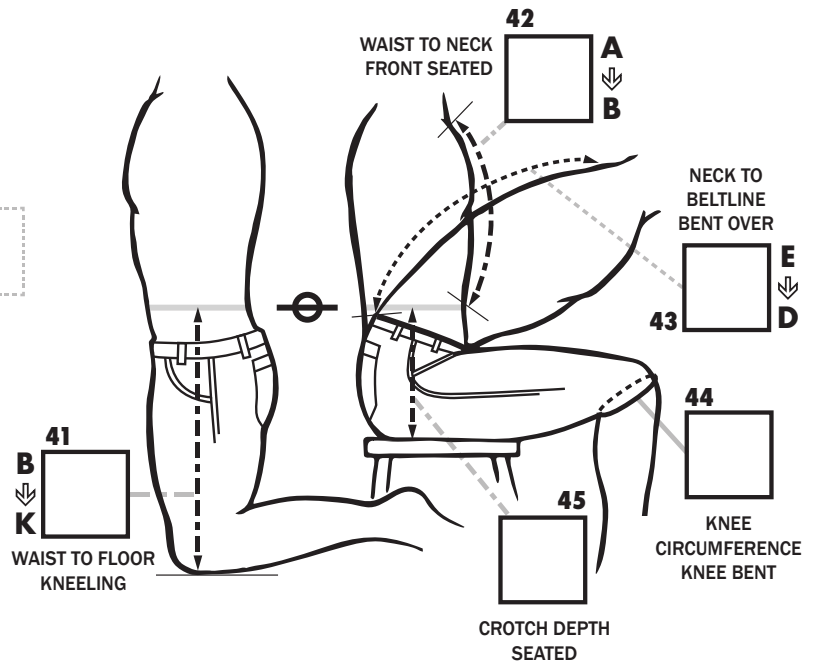
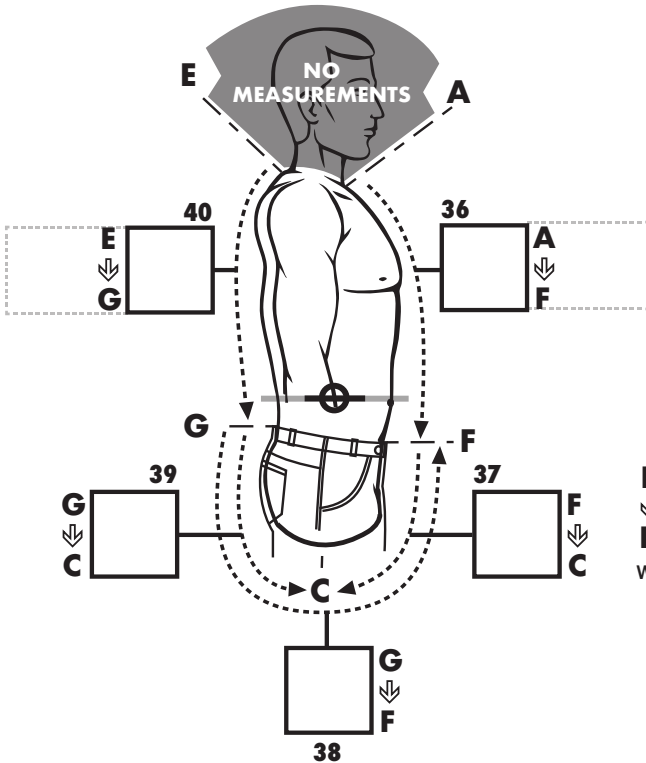
Waistline Measurements

Section D

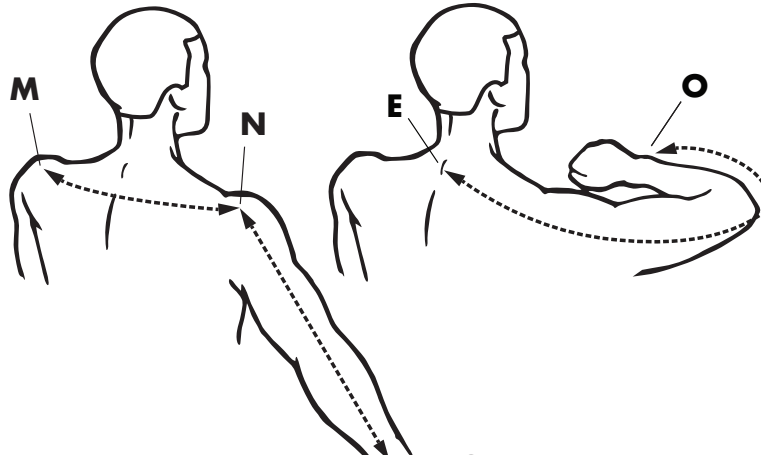


Section E Beltline Measurements

Section F Seated Measurements

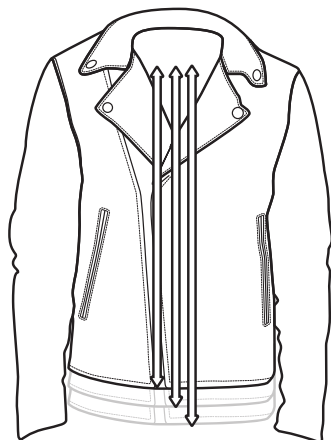
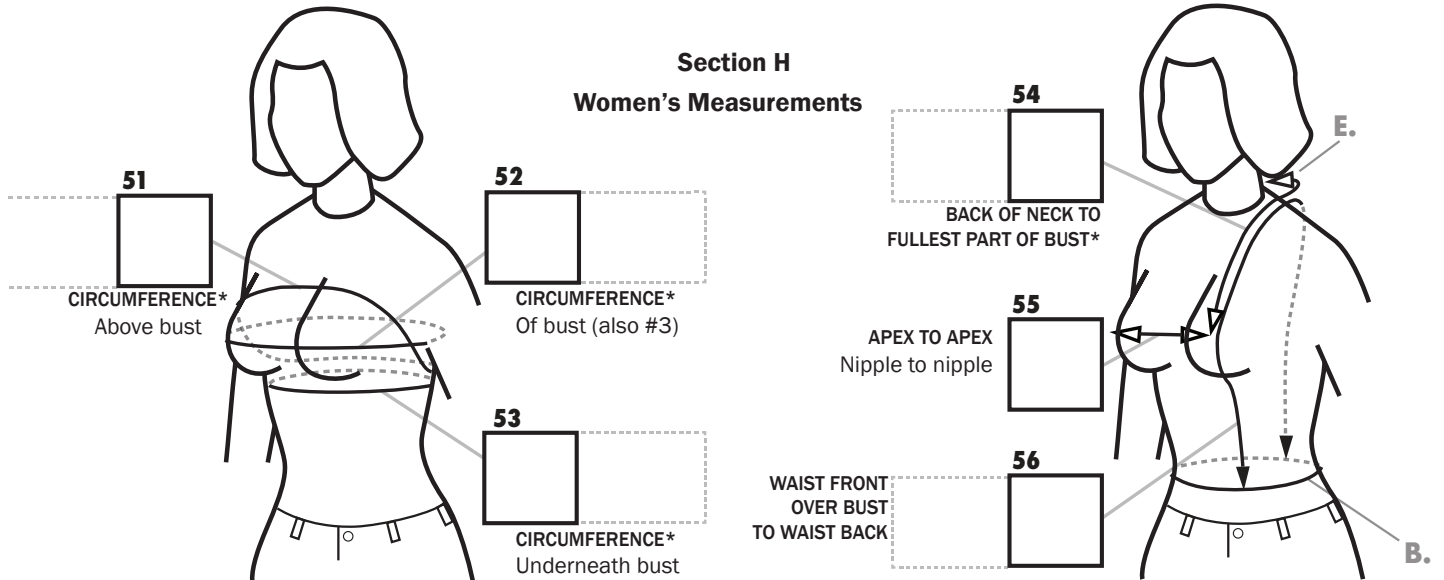


Section G Shoulder/Sleeve

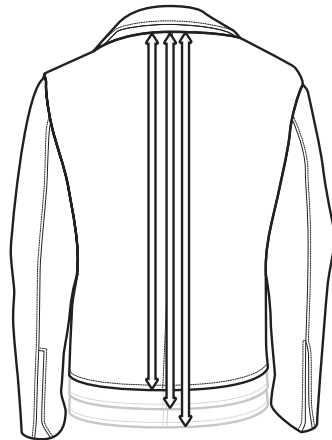


$$\begin{array}{ccccccc}
 \text{46} & \text{M} \rightarrow \text{N} & & \text{\#46} / 2 = & \text{47} & \text{N} \rightarrow \text{O} & \text{\#47} \pm \text{\#48} \\
 \boxed{} & \div 2 = & \boxed{} & + & \boxed{} & + 1.5'' = & \boxed{} = \boxed{} \text{50} \\
 \text{ACROSS SHOULDERS} & & & & \text{SLEEVE LENGTH} & & \text{NAPE OF NECK TO WRIST} \\
 & & & & \text{End \#46 to wristbone} & & \text{should equal \#50}
 \end{array}$$

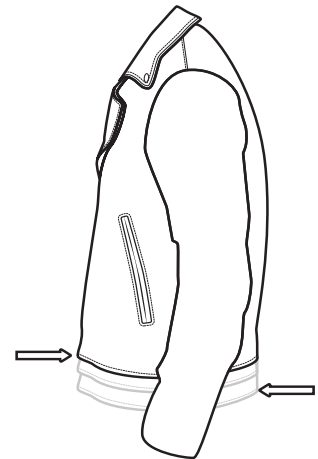
Section H Women's Measurements



57. DESIRED JACKET LENGTH IN FRONT
(Looking in a mirror) From the top of the ribcage determine where you want the bottom of your jacket to stop.



58. DESIRED JACKET LENGTH IN BACK
From the nape of the neck determine where you want the bottom of your jacket to stop.

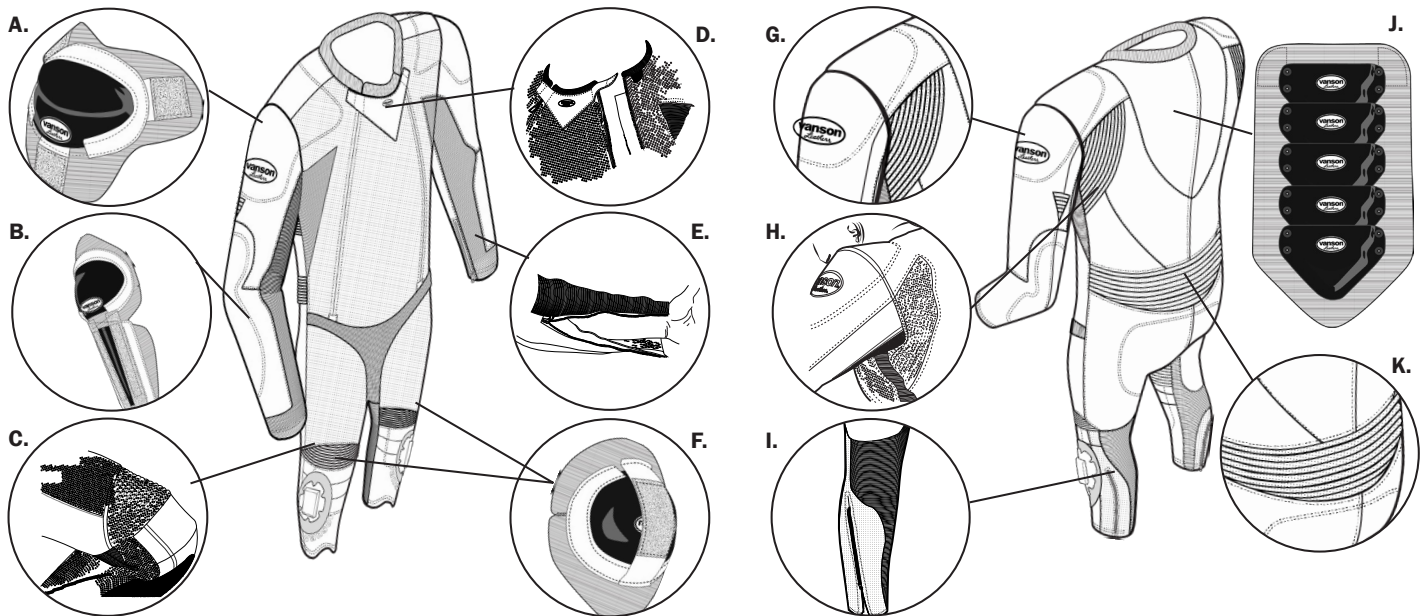


59. CIRCUMFERENCE Take circumference of torso with 57 being the front point of intersection and 58 being the back point of intersection.

Mark 3 Road Racing Suits

Styles: VE93 - VL93 - V093 - V942 - Standard Features For All Styles

1. Spandex beaded collar for no bulk and no restrictions.
2. Double-zipper front for ease of entry and smooth aerodynamic fit.
3. Side alignment of zippers allows for tighter tuck on bike and better overall fit.
4. Laminated front panel improves strength, ventilation and dramatically improves perspiration wicking (available only on double-zippered suits).
5. All brass hardware.
6. Removable lining via small gauge nylon zippers at elbows, knees, crotch and along main body that allows for partial removal of the main body lining for washing and suit maintenance (elbow-to-wrist and knee-to-ankle lining stitched in and are non-removable).
7. Seamless body-hugging Powerstretch™ from wrist to armpit includes cut-out at inner elbow for less bulk. Powerstretch™ at crotch for better comfort and reduced bulk in riding position and behind the legs follows the contour of the calf for comfort.
8. Extended and rotated sleeve and ankle zippers allow for easier entry and exit.
9. Moisture resistant flexible hip armor.
10. Articulated multi-scale spine pad and patented F.A.S. Full Floating Armor System with leather encapsulated hard plastic armor.
11. State of the art knee design moves seams away from the knee cap (this eliminates pressure on the knee and increases your movement, comfort, control and improves armor placement for safety).
12. New ergonomic knee expanders are radically shaped longer to eliminate pulling when knee is on asphalt.
13. Velcro® area with GP style sliders.
14. Raw edge finish at main zippers, wrist zippers and ankle zippers for less bulk.
15. Patented shoulders with forward rotated sleeves for even greater mobility and access.
16. New longer vented shoulder expanders for extended movement.
17. Properly ventilated leather from shoulders to bottom of the knee expanders for cooling and comfort.
18. Properly Ventilated leather panels on the back of calf from the knee to ankle for better cooling and reduced bulk.
19. Proper back expander for side-to-side motion, comfort and extra ventilation.
20. POWERSTRETCH cuffs for comfort in glove.
21. Ankle Scoop - less bulk in boots.
22. Elbow Expanders - less pulling when the arm is bent.



- A. **GP SHOULDER ARMOR** If you've ever high sided and landed with your shoulder breaking your fall for you, this is the armor you know you want.
- B. **GP ELBOW ARMOR** This gives you protection from the elbow all the way down your ulna. Ultimate arm protection!
- C. **KNEE EXPANDER** We place these (tough as nails) leather expanders in the section of your knee that begs for extra material to ensure comfort and ease when getting in and out of your tuck.
- D. **DOUBLE FRONT ZIPPERS*** If you want to be able to tuck with out a bunch of suit digging into your stomach this is for you. (*V094 only)
- E. **FOREARM ZIPPER** After a race you're going to want to escape your suit and arm pump makes that even more difficult than it initially was. Our forearm zip goes above the muscle to make disrobing a breeze.
- F. **GP KNEE ARMOR** After cracking your knee on a peg, handle bar, or other hard surface (asphalt) you want protection that has multiple layers of impact dispersion. Our GP knee armor does just that.
- G. **EXTRA LEATHER LAYER** We've seen enough suits to know where to place an extra layer of leather to limit any chances of burning through our hides to yours (on knee, shoulder, elbow, and seat).
- H. **SHOULDER EXPANDER** When you are in a full tuck the last thing you want is to have the back of your suit pulling your back and your neck.
- I. **POWERSTRETCH** Your calves do a lot of work during a race and because of that they sweat and expand. We place kevlar in those spots to expand with, ventilate, and protect the calf.
- J. **GP SPINE PROTECTOR** This is going to allow you to spill and keep on racing. Unfortunately there are a lot of friends out there who suffer back injuries from weak back protection. We did our best to ensure that does not happen to any of our riders.
- K. **LOWER BACK EXPANDER** When you're in a tuck we want your back to breathe while being protected, that's why we make 3-3.5 oz. perforated leather expanders.

NOTE: GP2 armor is the standard armor installed in all VE93 - VL93 - V093 - V942 Suits. You do have the options to choose Vanson's GP Armor or CE armor when ordering your suit. Refer to the suit style Order Form for armor pricing.

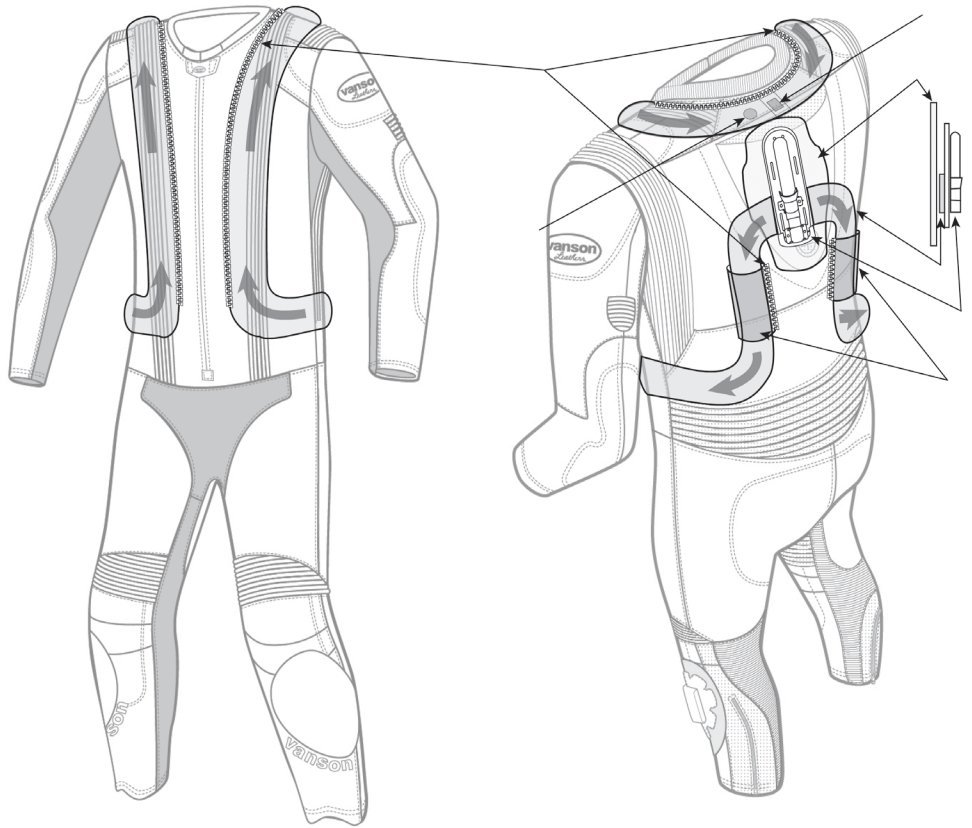
AirPro AirBag System Airflow

The benefits of an Air-Pro airbag system

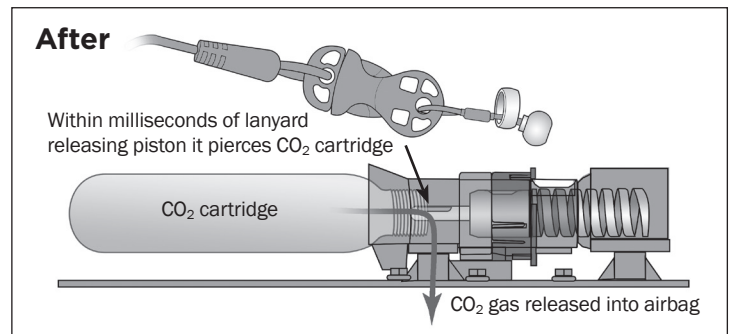
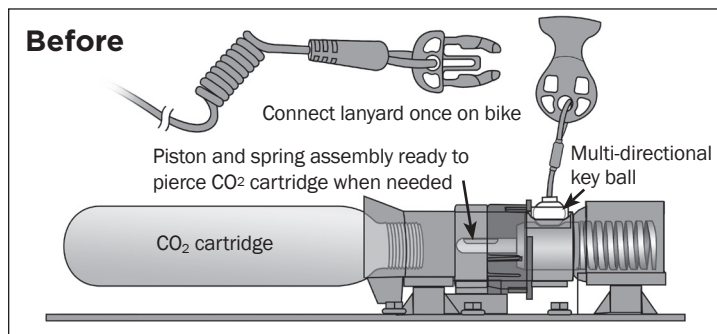
When the time comes (and it will come) and you get pitched from your bike the Air-Pro system is activated when the lanyard detaches from the trigger mechanism inflating the air bag instantly, usually within 0.09 seconds. Once pressurized, the airbag will provide protection to your neck, back, shoulder and ribs. The AirBag is designed to be used with Vanson's full armor for best results. Once inflated the suit will remain that way for about 10 seconds before deflation automatically starts, complete deflation may take a few minutes.

Recharging the Air-Pro airbag system

Once fully deflated you can now recharge/ reset the trigger assembly in just a few minutes. The system is designed to be used multiple times without the need of a factory reset. If in the rare instance the airbag is damaged just call us, in most cases you can purchase a new assembly and install it yourself.



NOTE: AirPro airbag option price will vary depending on whether the Trigger Assembly is mounted in the front of the suit or in the hump. Refer to the suit style Order Form for airbag trigger assembly location and pricing.



AirBags

The AirBag is made of high quality, abrasive resistant polyurethane which provides the best possible shock absorption. Maximum pressure when bag is inflated is 135Kpa (1.3766kg/cm²).

CAUTION: AirBag should not be exposed to temperatures over 50°C/122°F. It is possible the bag could punctured, ripped or damaged in an accident if hit with pointed, sharp objects.

CO2 Cartridge Guide

CO2 cartridges have a long life span, even so we recommend frequent checks. The check consists of weighing your cartridge making sure it falls within +/- 3g equivalent to the weight written on your cartridge.

1. CO2 cartridges are single time use.
2. Keep and use at the temperature below 40°C/104°F. Do not keep in the car where the temperature may go up high.
3. Cartridges must be used at temperatures over 0°C/32°F. If stored under 0°C/32°F slowly warm up before use.
4. Do not let corrosion form on the surface of the cartridge. If corrosion is noticed, replace it immediately.
5. Do not cut or puncture the gas cartridge.
6. Only install gas cartridges of same size and content supplied by Vanson.
7. Once the gas cartridge is installed, don't attempt to turn, loosen or remove it.
8. Screw the CO2 cartridge fully until it seats firmly in the key box but do not over tighten.
9. Keep the gas cartridges out of the reach of children.

Top 12 Reasons to Buy a Vanson

1 - Pride of Ownership

When you get a handmade Vanson custom suit you are joining a very exclusive worldwide club. These suits are heirloom quality, and given basic proper care will give decades of service.

2 - Express Yourself Through the Creation of a Beautiful and Unique Suit

Any graphic - you (we can help you) design it, we will make it. Or look at our design pages for inspiration. Note: subject to design/construction limitations of the basic garment we are making for you.

3 - Value

Get Back Up and Get Going – our suits are NOT crash and replace. Mike Martire has over 60 crashes on his suit; Brian “Crash” Kent over 40. Korry Hogan came off at 248 mph. Just before the finish line and slid 600 feet. Chris Hand got blown off his drag bike at 228 mph. Dale Quarterly lost it at full speed on the Daytona High Banks when his Ducati transmission locked up – 165 mph creating a 400 foot slide. Eric Wood at Homestead came off at 160 mph, and ran back to the pits to relaunch on his back-up bike.

4 - Strength + Protection

Race after race, year after year. Some of our oldest suits are still racing. Made from the strongest leathers, and the innovative and unique patented design features – such as the F.A.S. (Floating Armor System), Double Front Zipper racing suits, Powerstretch Aramid textile panels, RAM Air Sleeve vents, Air Curtain ventilation systems – Vanson continuously works to produce the best at the front of the pack. Take a look at Eric Guilbranson’s Crash101 video (on web homepage) on why and how the Vanson suits protect.

5 - Handmade with pride in our workshop in Fall River, Mass, USA.

The Vanson team has over 38 years experience of making dreams come true. We make and finish our own leather. We make our own Aramid textile – which we call Powerstretch. Every Vanson is designed, engineered, cut and produced in the U.S.A. of imported and domestic materials.

6 - Ownership Registry

All repairs, patterns and alterations are archived to enable us to repair and or reproduce each individual garment. We have tracked lost and stolen Vansons for their owners and the police.

7 - Reconditioning Service

We will clean and bathe Vanson leathers using the same pH balanced oils and waxes used in the original tanning and finishing of the leathers.

8 - Aftercare

We will alter, repair and maintain Vanson leathers whatever the age and condition so long as the finished product is deemed “safe” by us.

9 - Unique Designs & Patents

Double Zipper Front, Floating Armor, Air Bag, ? (optional), Fire-Proof Linings available

10 - Guaranteed Fit

Once measurements have been approved by us, we have the information we need to be able to guarantee the fit for a custom motorcycle jacket, pants or suit. No worries – see our measurement video and pages – or call us, we can help.

11 - Any Size

We will make to fit.

12 - Asphalt Insurance

Take a spill and you’ve got asphalt insurance you’re covered! ***Who else does that for their customer?***

**Custom Racing Suits • Experience the best!**

951 Broadway, Fall River, MA 02724

Phone (508) 678-2000 • Fax (508) 677-6773

E-Mail: vanson@vansonleathers.com • Web Site: www.vansonleathers.com

Date and location _____

Order Form

**After verification of measurements,
we guarantee the fit at no extra charge!**

Type or print clearly. Fill out all the relevant sections. Be sure to read this form carefully, including the terms and conditions section.

All orders must be signed and accompanied by a 50% deposit.

DUE DATE MAY CHANGE WITHOUT NOTIFICATION

Prices subject to change without notice

before receipt of order.

Suit Style #	Suit Color(s)	Vanson use only
		P.O.#

Salesman's #	Pick Up or Ship	Order Date	Office Use
			Date Order Received
		Due Date	
Dealer #			

Dealer Name _____

Customer's Name (if different from above) _____

Shipping Address _____

City _____ State _____ Zip _____

Dealer Phone (____) _____ Customer W. Phone (____) _____

Email _____ Customer H. Phone (____) _____

Birth Date ____/____/____ (used for Cust #) First Race Date Needed ____/____/____

Method of Payment: VISA ☐ MasterCard ☐ AMEX ☐ Discover ☐Money Order ☐ Check ☐ Check number _____

AMEX, Discover, VISA or MasterCard # _____

Exp. Date _____ CVC Code _____

Authorizing Signature _____

Calculate Cost Add the totals from each section of this form		Vanson Use
1 Basic Suit	\$	
2 Options	\$	
3 Graphic Design	\$	
4 Stripes Etc.	\$	
5 Letters & Numbers	\$	
Custom Fee	\$	
Total	\$	
Asphalt Ins. (+15%)	\$	
Rush Charge (+20%)	\$	
MA res.add sales tax	\$	
Credit on file <input type="checkbox"/> TOTAL	\$	
Deposit 50%	\$	
Shipping	\$	
BALANCE DUE	\$	

Note: If you change your order after we have received it your changes will affect our scheduling. Changes made after certain production steps will also incur additional charges.

TERMS AND CONDITIONS

All custom orders must be signed and be accompanied by a 50% deposit. This deposit is non-refundable once work has commenced on your order.

A rush service is available for a 20% surcharge on the total price of the garment. This is intended to cover costs related to producing your garment within 15 working days. However, this is not a guaranteed service and is dependent on our existing backlog when your order is received. In the event we are unable to produce your suit within the specified time, the rush charge will be refunded. Accurate measurements are your responsibility.

Alterations due to inaccurate measurements are chargeable to you.

If the balance on the garment is not pre-paid, the garment will ship C.O.D. (cash or certified check) for the balance.

Custom orders are not refundable, if any changes or alterations are required to the garment, it must be returned within 30 days from the date shipped.

All designs submitted or made as a result of this order become the exclusive property of Vanson Leathers Inc. and may not be used for any purpose without the written permission of Vanson Leathers, Inc. Vanson Leathers, Inc. reserves the right to change and modify product specifications.

Note: Florescent and metallic finishes on leather are decorative and are not warrantied by Vanson. All metallic and florescent finishes are light sensitive and may fade in sunlight. All non drum dyed leather, including metallic and florescent finishes, cannot be refinished by Vanson.