

A high-action photograph of a motorcycle rider leaning into a turn. The rider is wearing a black, white, and red racing suit with a Vanson logo on the sleeve, and a matching helmet. The motorcycle is a custom street and track bike, featuring a large, prominent V-twin engine, a high rear end, and a custom fairing. The background is a blurred racetrack, suggesting speed. In the bottom right corner, there is a yellow oval logo with the text "vanson Leathers".

Custom Street & Track Suit Guide

vanson
Leathers



Quality...from Professionals...for Professionals!

Vanson Leathers understands professional racers. They depend on premium quality protective garments, fast knowledgeable service and styles and graphics to showcase the racer and his or her sponsors.

Vanson Custom Suits are made from top-grain U.S. cowhide approximately **3 1/2 oz.** per square foot and **1.4 -1.7 mm**. We are constantly developing new features and experimenting with new materials. This ensures that we can offer the best product and service to professional riders. Vanson offers a complete “menu” of options and lettering styles to choose from, allowing you to design the suit you want.

Vanson Custom Suits are made from top-grain U.S. cowhide approximately **3 1/2 oz.** per square foot and **1.4 -1.7 mm**. We are constantly developing new features and experimenting with new materials. This ensures that we can offer the best product and service to professional riders. Vanson offers a complete “menu” of options and lettering styles to choose from, allowing you to design the suit you want.

How to use this Form

Select the **Style** of suit based on the standard features which meet your racing needs. For each Style, there is a list of available **Options**. These Options are available at an additional cost to the base price of the suit. Select the **Style** then the **Options**. Next, you can **Draw Your Own Design** or choose from the many standard **Graphic** designs we have provided for you. Color selections can be made from Vanson's wide selection of drum-dyed colors.

Sample leather color swatches are available upon request. Remember, you can change colors at any seam line for **no extra charge!** To add a personalized touch to your custom suit use the **Lettering and Logos** section.

Note: Foils and Special Effects leather cost 15% more. Be sure to show the placement of any custom lettering in the spaces provided. Then, using the special **Vanson Measuring Device**, complete the **Take Your Measurements** section. Be sure to follow the directions carefully and fill out all the measurements in this section. In order to verify your measurements, it is **required** that you include your **Height, Weight, and Age**.

Finally, using the Custom Measuring Guide, take your measurements, complete the form and your order by filling out the **Shipping Information** and adding the cost from each section including any options to determine the **Total Cost** of your suit.

Note: Foils and Special Effects leather cost 15% more. Be sure to show the placement of any custom lettering in the spaces provided. Then, using the special **Vanson Measuring Device**, complete the **Take Your Measurements** section. Be sure to follow the directions carefully and fill out all the measurements in this section. In order to verify your measurements, it is **required** that you include your **Height, Weight, and Age**.

Finally, using the Custom Measuring Guide, take your measurements, complete the form and your order by filling out the **Shipping Information** and adding the cost from each section including any options to determine the **Total Cost** of your suit.

The Proof is in the Patents

Buying a Vanson suit is purchasing a unique piece of leather working history. Over the years, as we have developed our own, unique way of producing a better quality garment we've come up with entirely new concepts for our riders. As these innovations have been discovered and perfected, they have been patented.

Currently **Vanson holds over 10 unique patents**. These cover everything from the way we set the zippers in our garments for our venting system to our Floating Armor System. Carefully designed for your comfort and safety when working with our superior materials, we always seek to innovate without sacrificing the longevity of our suits.

A small image of a United States Patent document. It features a large seal on the left side with the text "U.S. PATENT" and "OFFICE OF THE COMMISSIONER OF PATENTS". The document is titled "The Director of the United States Patent and Trademark Office" and contains text regarding the issuance of a patent. The signature "James A. Mader" is visible at the bottom right.

Currently **Vanson holds over 10 unique patents**. These cover everything from the way we set the zippers in our garments for our venting system to our Floating Armor System. Carefully designed for your comfort and safety when working with our superior materials, we always seek to innovate without sacrificing the longevity of our suits.



Custom Racing Suits • Experience the best!
951 Broadway, Fall River, MA 02724
Phone (508) 678-2000 • Fax (508) 677-6773
E-Mail: vanson@vansonleathers.com • Web Site: www.vansonleathers.com

NOTE: You must use the Custom Measuring Guide to Design and Record Your Measurements Along with the Order Form

What is a Street & Track suit?

The Street and Track combo is made for the individual who finds themselves wanting track-level protection with the convenience of pockets, reflective areas, vents and other creature comforts to improve your riding experiences. This is for the long rides on your high speed touring bike that you maintain with the same attention to detail and functionality that we put into these combos.

This Street and Track combo allows you to choose the things we make for our sport rider family and put them together for a two piece street and track combination that suits your specific needs with our proven sport rider technology. From a ride in the alps to a track day with your buddies, this is the combo that'll get it all done.

Vanson has the answer for the high performance rider who wants the versatility and comfort of a street riding jacket and pant combo, but needs the additional protection of a two-piece suit with a full circumference waist zipper.

Available only as a custom-fit "made to order" set, we combine any of a number of different jacket styles from the sport rider, technical and super motard line of jackets, with the matching pant style by altering the waistband, adding a back expander, and the full circumference zipper.

The pants and jacket zip together to form a secure riding garment appropriate for track days, riding schools and serious aggressive street riding. The two garments can also be worn independently.

Both the jacket and pant offer the armor features standard to the off-the-rack versions available. They can also be fitted with our F.A.S. GP race armor designed for the track.

Complete ventilation is available by selecting the Properf versions of the jacket or pants. Degrees of ventilation are offered on the Cobra, Cobra Star, Lightning and Technical Mark III jacket styles.

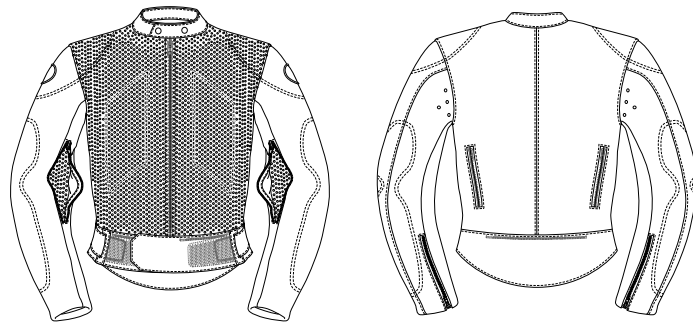
Due to construction limitations, we are unable to make the Track-Street Combo with the adjustable waistbands that come standard on the off-the-rack version.

Vanson strongly recommends the use of a purpose built racing suit for all forms of Motorcycle racing and does not recommend the Track-Street Combo for competition racing.

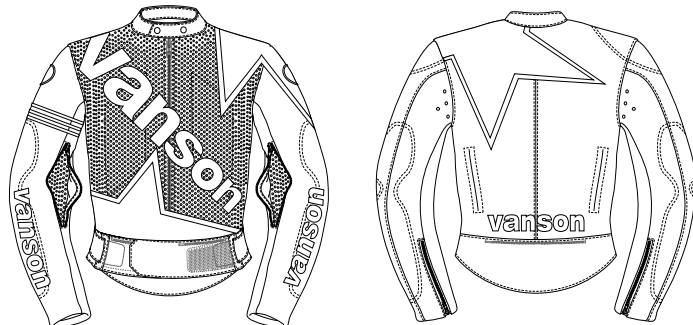
* Properf versions have perforated leather for the main body panels, replacing the solid leather panels. Collar and waistband are always solid leather.

All styles are also available in a women's fit.

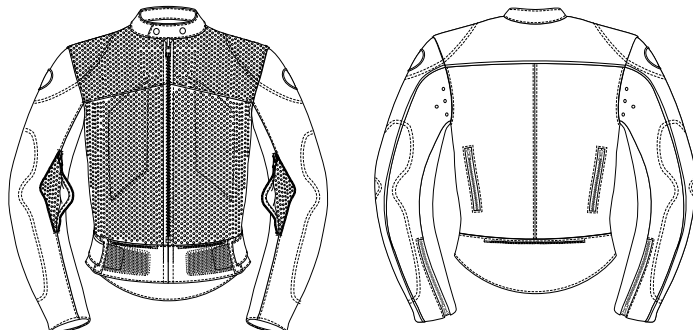
COBRA MK2 SPORTRIDER Model: COB2 BLK



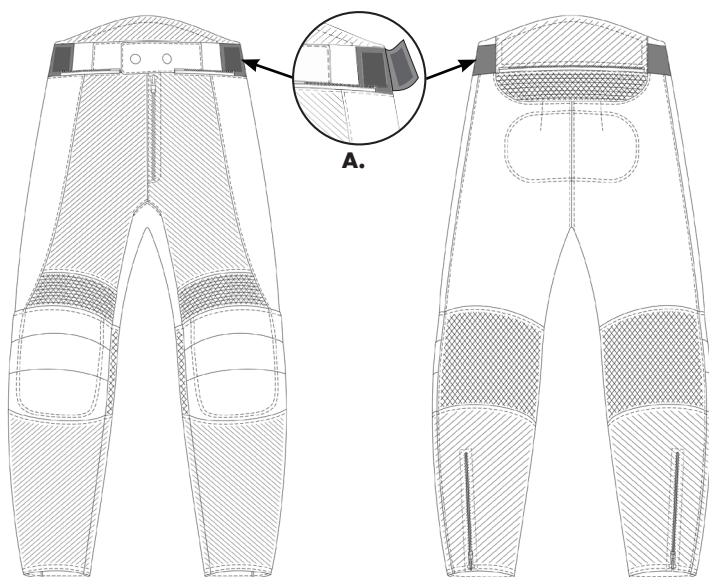
COBRA MK2 STAR SPORTRIDER Model: COS2 BLK



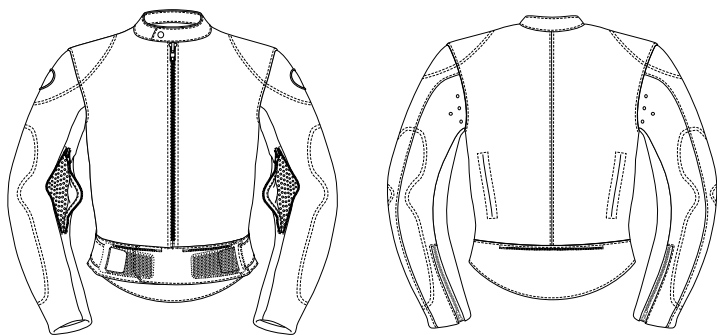
LIGHTNING MK2 SPORTRIDER Model: C3L2 BLK



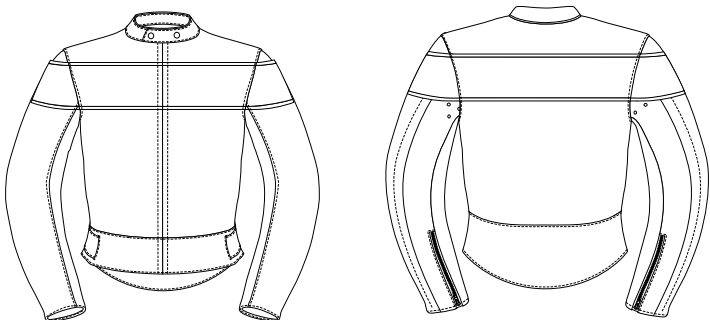
SUPER MOTO PANTS Model: SMP FIRE



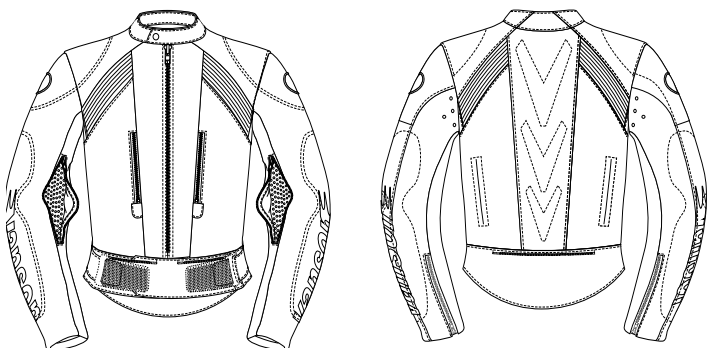
**SPORT RIDER Model: TEPS BLK /
PROPERF SPORT RIDER Model: TEPS BLK**



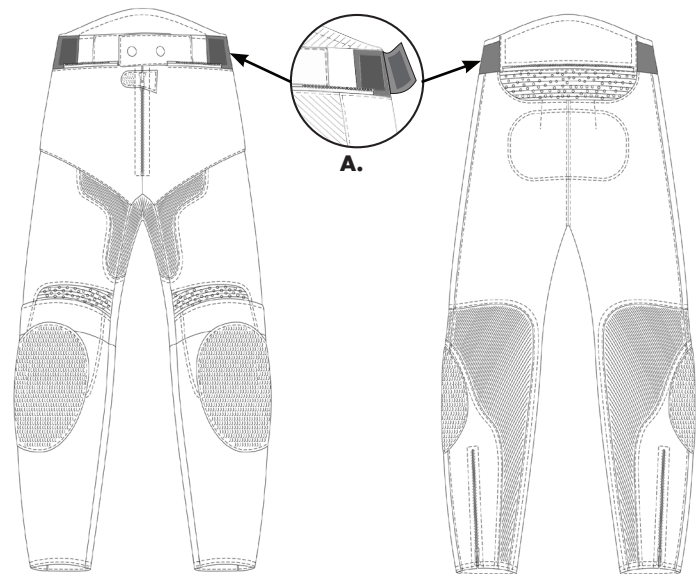
**STALLION Model: TEPS BLK /
PROPERF STALLION Model: TEPS BLK**



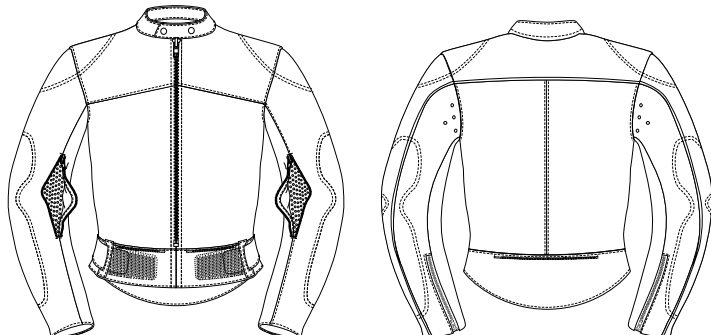
TECHNICAL MARK III



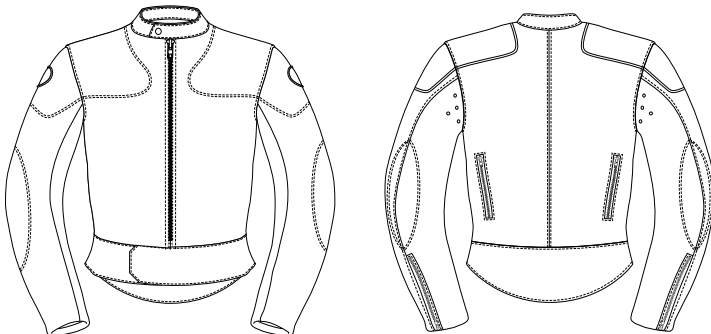
TECHNICAL PANTS Model: TEPS BLK



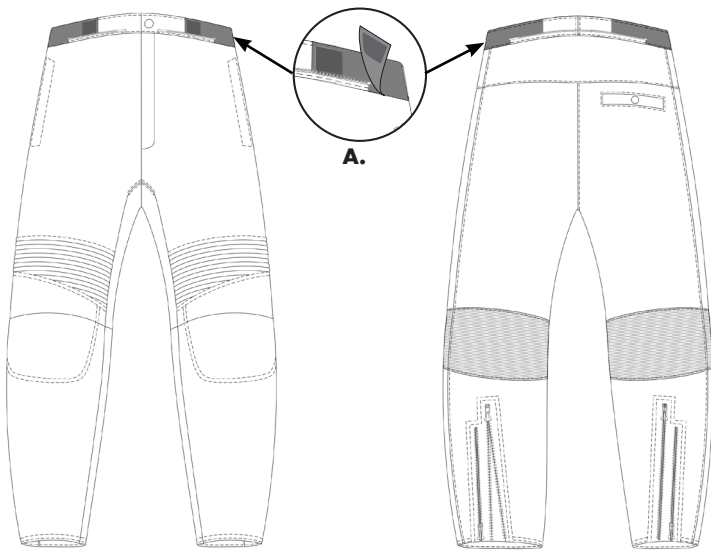
**SATELLITE MK2 SPORTRIDER Model: TEPS BLK /
HURRICANE MK2 SPORTRIDER Model: C3H2 P150**



**MANX Model: MANX BLK
not armorable**



**MK2 SPORT RIDER PANT Model: P100 BLK /
MK2 PERFD SPORTRIDER PANTS Model: P100 P150**



A. Expanding Waist - Expandable waist with adjustable elastic strap with velcro to give you a perfect fit when pants are not attached to jacket.

Select Options Street/Track Suit

Select the options to be added to the basic suit as needed from those listed. Lettering and custom graphics will be specified in later pages.

#	Description of option	Price \$
GP2 DIRECT-CONNECT CE ARMOR SYSTEM		
	CE ARMOR is attached to the underside of closed cell pads. This is a velcro direct-connect to the garment shell system. Shaped foam exterior pads hold CE LEVEL 2 inserts in place against the wearer for maximum protection.	
GP22	GP2 elbow forearm armor with shaped foam pad and CE elbow cap to provide large and secure coverage.	69.00 PAIR
GP23	GP2 CE knee armor with shaped pad capped with CE Armor.	65.00 PAIR
G.P. FLOATING HARD-ARMOR OPTIONS		
	F.A.S. (Floating Armor System) is the Vanson patented armor attachment system that allows the armor and garment to have limited slip which improves safety and comfort.	
PR2	GP elbow forearm armor	95.00 PAIR
PR3	GP knee armor	95.00 PAIR
BACK-PADS		
	BACKPADS used for Protection along spine.	
PRO4	Articulated scale back pad - F.A.S. attachment to lining	129.00 EACH
PROT	Strap-on back pad - (3,4,5,6,7 scale sizes available)	115.00 EACH
OUTSIDE APPLIED PATCHES - APPLIED TO OUTER SHELL		
	Patches maybe raw edge, or turned and finished. Any piping or contrast inset stripes along edge of patches are quoted on a case by case basis. Please call for more information.	
34	Applied shoulder patches sewn onto the outside shell	39.00 PAIR
34P	Add thin padding under the applied outside shoulder patches	15.00 PAIR
35	Vintage style applied outside hip patches	39.00 PAIR
35P	Add thin padding under applied outside hip patches	15.00 PAIR
36P	Add thin padding under shoulder yoke top stitching	20.00 EACH
37	Applied outside elbow patches	30.00 PAIR
37P	Add thin padding under applied elbow patches	15.00 PAIR
38	Applied outside knee patches	39.00 PAIR
38P	Add thin padding under applied outside knee patches	15.00 PAIR
CLASSIC DECORATIVE DIAMOND TOP STITCHING		
	Classic decorative diamond top stitching. Stitching can be on a patch or an area of the garment. Front yoke, back-yoke, shoulders, elbows, hips, and knees are traditional locations for this art.	
34Q	Diamond top-stitching on applied shoulder patch or shoulder	35.00 PAIR
35Q	Diamond top-stitching on applied hip patch or hip area	35.00 PAIR
36Q	Diamond top-stitching across shoulder yoke - front or back	35.00 EACH
	This classic decorative top stitch follows stitch lines drawn onto the yoke or yoke area	
37Q	Diamond top-stitching on elbow patch or elbow area	35.00 PAIR
38Q	Diamond top-stitching on knee patch or knee area	35.00 PAIR
INSIDE CLOSED CELL PADDING		
	Classic inside padding is closed cell foam backed with mesh or leather. Closed cell foam does not absorb moisture. Several closed cell applications have been superseded by either GP Armor or CE Armor options.	
1A	Elbow Padding - inside Oval football shape N/A w/armor	25.00 PAIR
1B	Knee Padding - inside Oval shape N/A w/armor	25.00 PAIR
1C	Spine Padding - inside - approx. 6 in wide N/A w/armor	40.00
1S	Shoulder Padding - inside - closed cell N/A w/armor	30.00 PAIR
3	Hip Padding - inside sewn at hip area N/A w/armor	40.00 PAIR
INSIDE LEATHER PATCH - DOUBLE LEATHER PROTECTION		
4	Full Double seat, inside pants	35.00
VENTING SYSTEMS AND VENT OPTIONS		
	Select venting systems from our collection of patented vent systems for perfect Air-Conditioning all year.	
19A	Zip Vents - on front show locations on diagram	40.00 PAIR
19B	COBRA Style Air-Curtain vents - (US Patent # 5.507.042)	200.00 PAIR

#	Description of option	Price \$
Adjustable vent under perforated leather - Note: cannot be used with zip-out mesh liner. Jackets + 2 piece suits only		
19C	RAM-AIR sleeve vents - zipper at inside of elbow on sleeve allows air flow up sleeve to armpit area. Patented design that prevents sleeve from billowing while flowing air	45.00 PAIR
	RAM-AIR pant vents - zip vent set into seam in upper front leg. Patented design prevents leg from billowing while air is flowing. Vent is controlled by water-proof zipper	45.00 PAIR
19E	Barracuda style vent across back from armhole to armhole. Zipper is tucked under the back yoke for protection. Structural integrity is provided by the lower back attached to a cordura mesh screen under the back leather yoke	50.00 EACH
7PV	TRANSFORMER Vent-pocket is a patented Vanson design. Pocket converts to large vent area when the outer cover is rolled up and secured under the top flap.	45.00 EACH
7PV		
7PV		
OUTSIDE POCKET OPTIONS		
	Show number and location of outside pockets wanted on the design form. Depict type of pocket, and where wanted.	
7	Outside pocket - Zipper closed	20.00 EACH
7A	Outside pocket - Snap closed	20.00 EACH
7C	Outside pocket - Open welted pockets	20.00 EACH
7D	Outside pocket - Flap	25.00 EACH
7G	Leather lined outside zipper pocket	35.00 EACH
7H	Leather lined outside snap pocket	30.00 EACH
7M	Ignition key pocket - leather lined - on left sleeve,	10.00 EACH
7M	Pocket is low bulk, set flush in sleeve with exposed zipper	
7N	Ignition key pocket - leather lined - on right sleeve,	10.00 EACH
7N	Pocket is low bulk, set flush in sleeve with exposed zipper	
7PC	Cargo pocket with center front bellows pleat. Top Entry. Pocket is applied onto garment. CIRCLE top entry finish: OPEN VELCRO-STRIP CENTER-SNAP	25.00 EACH
7PCD	Cargo pocket with side wall construction. Top Entry. Pocket is applied onto garment. CIRCLE top entry finish: OPEN VELCRO-STRIP CENTER-SNAP	25.00 EACH
7PCF	Add a flap to close over #7PC or #7PCD cargo pockets. Flap is applied above cargo pocket. CIRCLE flap closure OPEN VELCRO-STRIP TWIN-SNAP	15.00 EACH
DPP	Delete pant pockets - note exceptions on diagram -section 4	N/C
COLLAR DETAILS		
15	RAF style collar (shirt style) CIRCLE collar snap type	20.00
15	NO-SNAP SNAP-DOWN-COLLAR HIDDEN-SNAP	
22	Bound collar - CIRCLE: LEATHER or SPANDEX	25.00 EACH
22A	Velcro security tab across top of front zipper	20.00 EACH
22B	Nehru collar - open at center front	32.00 EACH
EPAULET / BELTS / SUSPENDER OPTIONS		
40A	Suspender buttons - set to waistband of pants - four sets of two buttons each to attach suspenders #40S	25.00 SET
40S	Suspenders - also sold separately - X elastic pattern. Four flat leather ends - with 2 Button-Holes each end.	49.00 EACH
56P	Epaulets and shoulder snaps	20.00 PAIR
56R	Epaulets - sewn into neckline, military flight jacket style	20.00 PAIR
WINDFLAPS and TORSO OPTIONS		
28	Applied exterior windflap covering center front zipper. CLOSURE: ROW-of-SNAPS STRIP-of-VELCRO OPEN	50.00 EACH
28E	Fly-over extended front - military style - extension covers center front zipper (similar to an A2 flight jacket) CLOSURE: ROW-of-SNAPS STRIP-of-VELCRO OPEN	50.00 EACH
DWF	Delete windflap under center front zipper	N/C
JACKET WAISTBAND OPTIONS		
40B	Delete jacket waistband	N/C
42DV	Change velcro to hidden snap closure at front of waistband.	15.00 EACH

Select Options Street/Track Suit, continued

#	Description of option	Price \$
2 PIECE SUIT JACKET TO PANTS CONNECTION OPTIONS Join a jacket and pants together to make a 2 piece suit. Change waist connection details.		
42O2	Change waist zipper pull direction from Right-to-Left around torso to Left-to-Right for Left-handed riders.	10.00 XTRA
WRIST DETAILS Wrist details are very important to achieving the perfect fit with as little bulk as possible.		
11	Velcro security tabs over the zip pull at wrist and/or ankle zippers. CIRCLE: WRIST ANKLE	20.00 PAIR
11B	Raw edge sleeve finish - for low bulk competition leathers	20.00 PAIR
11C	Beaded wrist end. Raw edge sleeve end bound with leather.	20.00 PAIR
11D	Raw edge sleeve end with leather bead and snap. Leather binding has an extension for a snap on under sleeve.	25.00 PAIR
11E	Sleeve tab inserted into top sleeve at wrist zip end. Tab reaches across zipper and snaps to under sleeve. Old school 1950's style.	30.00 PAIR
14D	Wrist zippers cut into top sleeves. Classic Rockers style.	18.00 PAIR
40	Ignition kill switch 'D' Ring - attachment point on garment for safety. Describe Location:	10.00 EACH
40L	'D' Ring - Left wrist - for kill switch cord	10.00 EACH
40R	'D' Ring -Right Wrist - for kill switch cord	10.00 EACH
PANT + LOWER LEG + ANKLE DETAILS Pant options for security and comfort		
13A	10" Ankle zipper (placed to fit)	20.00 PAIR
13B	Cover over ankle zippers CIRCLE: VELCRO SNAP	20.00 PAIR
13C	Velcro security tabs over the zip pull at ankle zippers CIRCLE: VELCRO SNAP	15.00 PAIR
14	Ankle zippers behind legs. Generally cut into rear-leg panel along center-line.	20.00 PAIR
14E	Double ankle zipper design with 12 in zipper and gusset to allow pants either a Boot Cut or Tapered fit. Next to the gusset zipper is the second zipper to open and close the legs for easy on and off. Set to back of leg.	40.00 PAIR
AS	We use a cut-away in the front of your pant cuff to reduce bulk and restriction when you are tucked in race position.	25.00 PAIR
BOOT	Boot cut to fit over boots. Boot-cut flare.	25.00 PAIR
KS	Powerstretch Stirrups at end of pant hem - to hold pants down inside boots.	30.00 PAIR
PUCKS / KNEE SLIDERS		
21	Tear-off leather patch to cover knee puck velcro field cover matches suit graphics - includes velcro field Order with 21A and 21B	40.00 PAIR
21A	Knee Pucks with Velcro field	79.00 PAIR
21B	Velcro fields for knee pucks (velcro only)	40.00 PAIR
21C	Replacement Pucks only. Price per pair	49.00 PAIR
LINING OPTIONS Lining options flagged as EACH are for full lining options in addition to the standard linings that come with garment.		
17	Rayon lining	N/C
17AC	CoolMax lining - body + Sleeves	50.00 XTRA
17B	Quilt lining	20.00 XTRA
17D	Cotton plaid lining with rayon sleeves	20.00 XTRA
CARL	Single layer CARBONX lining instead of standard lining. Carbonx liners give heat and flame protection.	100.00 XTRA
INSIDE POCKET OPTIONS pockets set to lining - horizontally		
6A	Inside open top pocket set into lining, right side	20.00 EACH
6B	Inside open top pocket set into lining, left side	20.00 EACH
6D	Inside applied leather patch pocket CIRCLE: LEFT or RIGHT	25.00 EACH

#	Description of option	Price \$
ALL LEATHER FACING POCKETS - SET PERPENDICULAR TO FACING These pocket all run parallel to the center front zipper. Being anchored to the facing helps support a lot of weight.		
27B	Leather penholder - single pen onto facing or lining	8.00 EACH
6H	All leather lined facing pocket - snap closed LEFT or RIGHT	30.00 EACH
6I	All leather facing pocket closed with zipper LEFT or RIGHT	40.00 EACH
6J	All leather pocket - open entry LEFT or RIGHT	30.00 EACH
6M	All leather gun pocket - kidney shaped - LEFT or RIGHT	45.00 EACH
CIRCLE: OPEN-ENTRY SNAP		
6N	Custom designed all leather gun pocket. Send outline trace of gun around which we will design the pocket. CIRCLE: LEFT-FACING RIGHT-FACING OPEN-ENTRY SNAP	75.00 EACH
PERFORATIONS ADDED TO SOLID PANELS FOR EXTRA VENTILATION These are larger holes, die cut, farther apart than PROperf This allows the perforation of an otherwise solid leather panel. This is good for areas that need a little extra air flow.		
20	Extra grommet reinforced holes at each under/arm area grommets on both under sleeve and body	15.00 PAIR
20A	PERFORATIONS - front - on body under arms	20.00 PAIR
20B	PERFORATIONS - inside elbows	25.00 PAIR
20C	PERFORATIONS - behind knees	15.00 PAIR
20E	PERFORATIONS - waist to crotch - front	35.00 PAIR
20F	PERFORATIONS - on body, behind side seam at under arm area	20.00 PAIR
46	PERFORATIONS - band across upper front chest - arm to arm	35.00 EACH
46A	PERFORATIONS - at bicep - top sleeves - next to inseam	20.00 PAIR
46B	PERFORATIONS - on inner thighs - top legs - along inseam	20.00 PAIR
46C	PERFORATIONS - on back of jacket, along side seams	20.00 PAIR
46D	PERFORATIONS - on rear at side seams - shoulder to waist	35.00 PAIR
PROperf LEATHER - CHANGE AREAS + PANELS to PROperf PROperf leather is leather that has been machine perforated with small diameter holes spaced closely together. This allows maximum air flow into the garment. PROperf leather is also softer and more flexible as a result of perforating		
20T	PROperf back of leg, calf from knee to ankle	15.00 XTRA
46E	PROperf under sleeve panels	20.00 XTRA
46PJ	PROperf fronts shoulder to waistband - (jackets + suits)	25.00 XTRA
46PP	PROperf front legs waist to knee seam	20.00 XTRA
POWERSTRETCH NYLON + ARAMID WOVEN PANELS Powerstretch reduces bulk in the same manner as spandex, but is woven using high strength cordura nylon and aramid to achieve a high resistance to abrasion.		
39AK	POWERSTRETCH Elbow inseam Oval cut-outs	40.00 PAIR
39BK	POWERSTRETCH Behind knees Oval or Band 5 in high across leg	40.00 PAIR
39FK	POWERSTRETCH Elbow/Forearm - Keyhole shape cut-out	50.00 PAIR
39HK	POWERSTRETCH 1 in strip Wrist to Armhole along sleeve inseam	50.00 PAIR
40VJ	POWERSTRETCH options jacket body and arms	85.00 SET
40VK	POWERSTRETCH VELOCITY 2 piece suit - Arms, Legs, and Crotch	175.00 SET
40VP	POWERSTRETCH options pants - Ankle to Crotch to Ankle. Note there is shape at back of knee for enhanced comfort.	89.00 SET
KC	Kevlar Cuffs replaces leather at your wrists to reduce bulk in your gloves. The cuff is 1.50 in high.	35.00 PAIR
EXPANDER PANEL OPTIONS Expander panels are generally made using PROperf leather or Medium weight Firenze leather to make the expander sections as soft, comfortable and flexible as possible.		
44A	Leather expanders added to back at shoulders CIRCLE: HEAVY-MESH(check tech for ok) SOLID-LEATHER PROperf	50.00 PAIR
99D1	Delete leather expander sections above knees	N/C
ELEX	Elbow Expanders allow free bending at your elbow and reduces the pulling down on your shoulders. CIRCLE: HEAVY-MESH(check tech for ok) SOLID-LEATHER PROperf	50.00 PAIR
EMBROIDERED LOGO + SPONSOR PATCHES Personalize your suit with special patches.		
23	Velcro sewn in square on back to accept #24 (Leather Patch)	25.00 EACH

Select Options Street/Track Suit, continued

#	Description of option	Price \$
	EMBROIDERED LOGO + SPONSOR PATCHES - continued	
23	Square Size approx. 12 in wide x 12 in high (velcro pile)	
23	Old School. Vintage.	
24	Square of leather with strips of velcro to mate up with #23	30.00 EACH
24	Square Size approx. 12 in Wide x 12 in High.(Velcro hook)	
24	Specify color, price does not include letters & numbers.	
26	Sewing on Sponsor Patch(es) provided by customer covered in clear plastic to help keep patch clean. Cost is per patch.	10.00 EACH
26B	Sewing on patch - no cover	8.00 EACH
26C	Chenille VANSON patch - Classic script with flowing "V" Patches are handmade and are approx 13 in to 15 in long x 8 in high	60.00 EACH
26D	VANSON STAR - two color approximately 1/2 in outline Approximate sizes CIRCLE: 15.5 in Wide x 13.75 in High 13 in Wide x 11.75 in High - 10.75 in Wide x 10 in High	49.00 EACH
26E	RED, WHITE and BLUE - U.S. FLAG Patch - Embroidered by Vanson. Placed on shoulders - always set with star field facing forward. Show location in section 4.	20.00 EACH
26F	BLACK/GREY - First Responder - U.S. FLAG Patch Embroidered by Vanson. Placed on shoulders - always set with star field facing forward. Show location in section 4.	20.00 EACH
26P	U.S. Flag - leather patch (approx. 12 in x 8 in) 100% leather flag with full 50 star field sewn to back	89.00 EACH
26R	Leather crossed VICTORY checkered flags - sewn on back	85.00 EACH
26S	Leather VICTORY checkered flag - small for chest/shoulder/glove	60.00 EACH
26T	Reflective VANSON Oval (rubber Oval) Specify location and number in section 4.	N/C
26TA	VANSON Competition Oval(s) (vinyl) Specify location and number in section 4.	N/C
26TE	Standard Cloth Embroidered VANSON Oval Specify location and number in section 4.	N/C
26TL	Leather embroidered VANSON Oval - specify colors Specify location and number in section 4.	25.00 ACH
26V	VANSON V in a circle - vintage Vanson logo from 1974 Circle is 3.25 in in diameter. Used for chest and shoulders	25.00 EACH
26VV	VANSON V - vintage Vanson logo from 1974 V is 1.50 in Wide x 2.25 in High. Used on chest and shoulders.	20.00 EACH
	VANSON LOGO LETTERING	
	Traditional Vanson logos developed for competition leathers	
10	VANSON extra logo-chargeable - show locations in section 4.	15.00 EACH
10BA	Sized to fit - VANSON - across butt of suit or pants.	15.00 EACH
10BB	Sized to fit - VANSON - across lower back.	15.00 EACH
10BC	Small VANSON embroidered on both ends of collar.	N/C
10BF	Small VANSON stitched to top sleeves along forearm	PAIR
10BS	Small VANSON letters stitched to under sleeves	30.00 PAIR
10BT	Sized to fit - Vanson - stitched to thighs.	30.00 PAIR
10BV	Small VANSON stitched around lower knee puck velcro field	30.00 PAIR
10F	Sponsor Credit for placing additional "VANSON" on garment	-30.00 N/C

#	Description of option	Price \$
	HUMP OPTIONS	
	Humps were developed to fill in the void behind the helmet and thereby streamline the rider profile. Humps also serve to hide and protect gear such as Air-Bag mechanisms, radios and water camel systems.	
HUMP	SLIPSTREAM pad in contoured closed cell non absorbent foam. Note: SLIPSTREAM pad may limit graphic sizing and availability on some suits and jackets.	190.00 EACH
HUMR	Add RADIO cavity to Hump. Includes hollowing out the Hump to contain the radio with earpiece wire pass-through in the front face of the hump. Order Hump separately. Radio not included.	20.00 XTRA
HUMV	SLIPSTREAM Hump enhanced with flow through ventilation system from the front of the Hump through airways into the back of the garment.	190.00 EACH
HUMW	Camel back reservoir holds about 8 fl. oz. of water. Water line is led inside to side of neck where velcro hangers support it. Order Hump separately.	130.00 XTRA
	HARDWARE OPTIONS	
55	Chrome hardware + zippers	N/C
55A	Brass hardware + zippers	N/C
55B	Black hardware + Molded black nylon zippers	N/C
55C	Black hardware + black metal zippers. Black Anodized finish	N/C
55N	Riveted leather zipper pulls - Circle: BRASS CHROME	3.00 EACH
	REFLECTIVE or LEATHER PIPING or FRINGE OPTION	
	Reflective piping is 3M retro-reflective material - this reflects light back towards the source. Friction and use from normal wear and tear damages all piping and fringe over time. Damaged piping and fringe are not repairable.	
AA1	PIPING set into sleeve outseam - ending at top of wrist zipper or at the bottom hem of the sleeve.	70.00 PAIR
AA3	PIPING set in leg outseams ending at top of zipper or end of pant leg hem.	75.00 PAIR
AB1	3M Reflective piping set into sleeve outseam. Piping ends at the top of the wrist zipper or at bottom hem of sleeve.	60.00 PAIR
AB3	3M Reflective piping sewn into leg outseams. Piping ends at top of ankle zipper or end of bottom hem of pants.	75.00 PAIR
BA1	6 in long FRINGE set into sleeves outseams - ending at top of wrist zipper, or 6 in up from sleeve end if no wrist zipper.	90.00 PAIR
BA3	6 in long FRINGE set into leg outseams - ending 6 in up from bottom hem of pants.	100.00 PAIR

TOTAL OPTIONS \$



CALIFORNIA PROP65 WARNING: This product can expose you to chemicals, substances and materials known to the State of California to cause cancer and birth defects or other reproductive harm.

ADVERTENCIA: Este producto puede exponerlo a productos químicos, sustancias y materiales que el estado de California reconoce como causantes de cancer y defectos de nacimiento u otros danos reproductivos.

This image shows a single sheet of white paper with horizontal ruling lines. The lines are evenly spaced and run across the width of the page. There are no margins, text, or other markings on the paper.

Top 12 Reasons to Buy a Vanson

1 - Pride of Ownership

When you get a handmade Vanson custom suit you are joining a very exclusive worldwide club. These suits are heirloom quality, and given basic proper care will give decades of service.

2 - Express Yourself Through the Creation of a Beautiful and Unique Suit

Any graphic - you (we can help you) design it, we will make it. Or look at our design pages for inspiration. Note: subject to design/construction limitations of the basic garment we are making for you.

3 - Value

Get Back Up and Get Going – our suits are NOT crash and replace. Mike Martire has over 60 crashes on his suit; Brian “Crash” Kent over 40. Korry Hogan came off at 248 mph. Just before the finish line and slid 600 feet. Chris Hand got blown off his drag bike at 228 mph. Dale Quarterly lost it at full speed on the Daytona High Banks when his Ducati transmission locked up – 165 mph creating a 400 foot slide. Eric Wood at Homestead came off at 160 mph, and ran back to the pits to relaunch on his back-up bike.

4 - Strength + Protection

Race after race, year after year. Some of our oldest suits are still racing. Made from the strongest leathers, and the innovative and unique patented design features – such as the F.A.S. (Floating Armor System), Double Front Zipper racing suits, Powerstretch Aramid textile panels, RAM Air Sleeve vents, Air Curtain ventilation systems – Vanson continuously works to produce the best at the front of the pack. Take a look at Eric Guilbranson’s Crash101 video (on web homepage) on why and how the Vanson suits protect.

5 - Handmade with pride in our workshop in Fall River, Mass, USA.

The Vanson team has over 38 years experience of making dreams come true. We make and finish our own leather. We make our own Aramid textile – which we call Powerstretch. Every Vanson is designed, engineered, cut and produced in the U.S.A. of imported and domestic materials.

6 - Ownership Registry

All repairs, patterns and alterations are archived to enable us to repair and or reproduce each individual garment. We have tracked lost and stolen Vansons for their owners and the police.

7 - Reconditioning Service

We will clean and bathe Vanson leathers using the same ph balanced oils and waxes used in the original tanning and finishing of the leathers.

8 - Aftercare

We will alter, repair and maintain Vanson leathers whatever the age and condition so long as the finished product is deemed “safe” by us.

9 - Unique Designs & Patents

Double Zipper Front, Floating Armor, Air Bag, ? (optional), Fire-Proof Linings available

10 - Guaranteed Fit

Once measurements have been approved by us, we have the information we need to be able to guarantee the fit for a custom motorcycle jacket, pants or suit. No worries – see our measurement video and pages – or call us, we can help.

11 - Any Size

We will make to fit.

12 - Asphalt Insurance

Take a spill and you’ve got asphalt insurance you’re covered! **Who else does that for their customer?**



Custom Racing Suits

951 Broadway, Fall River, MA 02724

Phone (508) 678-2000 • Fax (508) 677-6773

E-Mail: vanson@vansonleathers.com • Web Site: www.vansonleathers.com