

Supermoto Suit Guide



Supermoto rider Steve Walton

Quality...from Professionals...for Professionals!

Vanson Leathers understands professional racers. They depend on premium quality protective garments, fast knowledgeable service and styles and graphics to showcase the racer and his or her sponsors.

Vanson Custom Suits are made from top-grain U.S. cowhide approximately **3 1/2 oz.** per square foot and **1.4 -1.7 mm.** We are constantly developing new features and experimenting with new materials. This ensures that we can offer the best product and service to professional riders. Vanson offers a complete "menu" of options and lettering styles to choose from, allowing you to design the suit you want.

How to use this Form

Select the **Style** of suit based on the standard features which meet your racing needs. For each Style, there is a list of available **Options**. These Options are available at an additional cost to the base price of the suit. Select the **Style** then the **Options**. Next, you can **Draw Your Own Design** or choose from the many standard **Graphic** designs we have provided for you. Color selections can be made from Vanson's wide selection of drum-dyed colors.

Sample leather color swatches are available upon request. Remember, you can change colors at any seam line for **no extra charge!** To add a personalized touch to your custom suit use the **Lettering and Logos** section.

Note: Foils and Special Effects leather cost 15% more. Be sure to show the placement of any custom lettering in the spaces provided. Then, using the special **Vanson Measuring Device**, complete the **Take Your Measurements** section. Be sure to follow the directions carefully and fill out all the measurements in this section. In order to verify your measurements, it is **required** that you include your **Height, Weight, and Age**.

Finally, using the Custom Measuring Guide, take your measurements, complete the form and your order by filling out the **Shipping Information** and adding the cost from each section including any options to determine the **Total Cost** of your suit.

The Proof is in the Patents

Buying a Vanson suit is purchasing a unique piece of leather working history. Over the years, as we have developed our own, unique way of producing a better quality garment we've come up with entirely new concepts for our riders. As these innovations have been discovered and perfected, they have been patented.

Currently **Vanson holds over 10 unique patents.** These cover everything from the way we set the zippers in our garments for our venting system to our Floating Armor System. Carefully designed for your comfort and safety when working with our superior materials, we always seek to innovate without sacrificing the longevity of our suits.



Custom Racing Suits • Experience the best!

951 Broadway, Fall River, MA 02724

Phone (508) 678-2000 • Fax (508) 677-6773

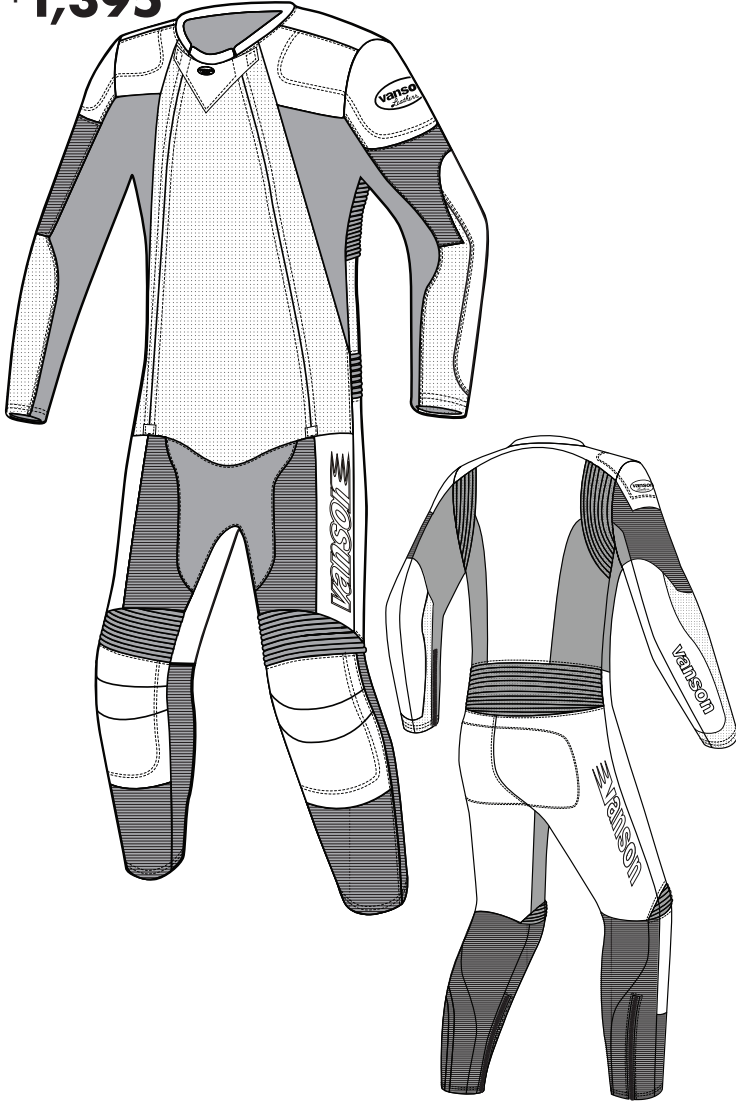
E-Mail: vanson@vansonleathers.com • Web Site: www.vansonleathers.com

NOTE: You must use the Custom Measuring Guide to Design and Record Your Measurements Along with the Order Form

SMO2 One Piece Moto Suit

Custom Suit
starting from

\$1,395

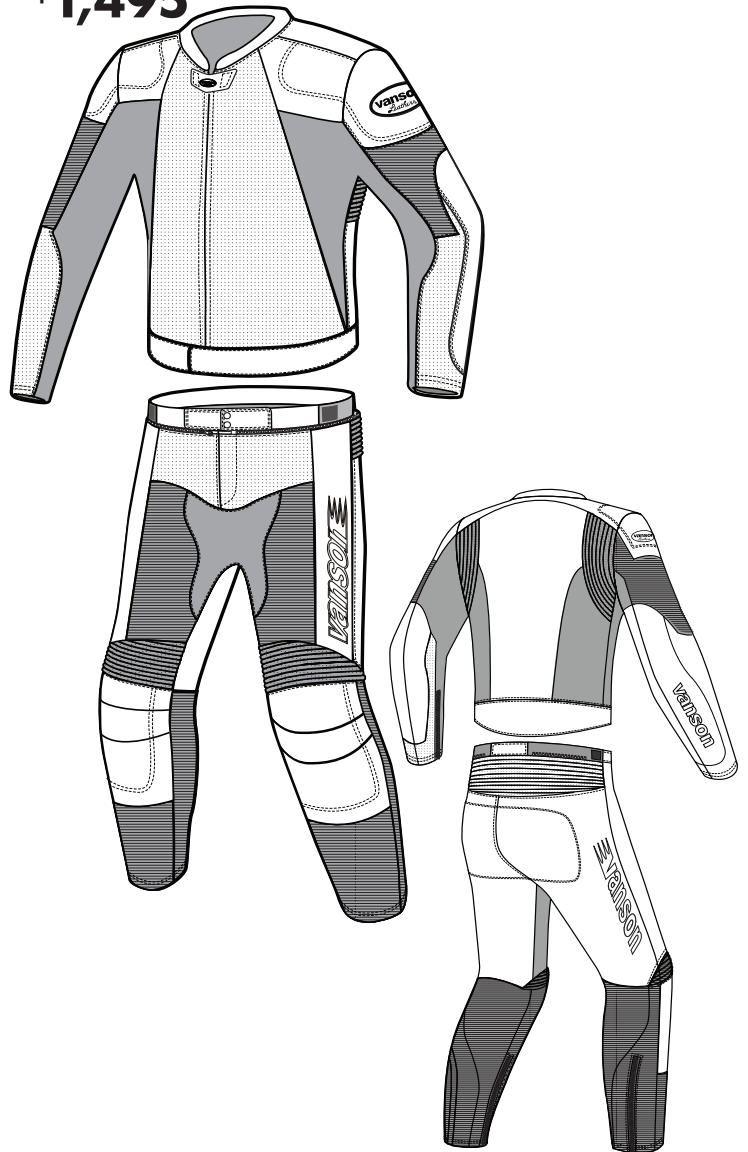


The new SMO2 featuring CE approved armor and a double zipper entry system has set a new benchmark for excellence in super moto racing suits. Standard features include POWERSTRETCH - a VANSO™, specifically woven aramid and high tensile nylon stretch fabric.

SM22 Two Piece Moto Suit

Custom Suit
starting from

\$1,495



Same as the one piece Super Moto suit but with the convenience of a full circumference zipper to lock the jacket to the pants. Only available as a single front zippered jacket.

Standard Features

- 1. PROperf™ Ventilation Panels** The front panels of the suits are perforated for flow through ventilation. This feature combined with a perspiration wicking mesh lining will help to keep you comfortable even on the hottest day.
- 2. VANSO™ Powerstretch™ Panels** - Our Powerstretch™ panels allow for a snug fit with excellent ease of movement. Powerstretch™ has an extremely high tensile strength. This combined with a stretch material results in comfort and strength where you need it most.
- 3. Double-Zipper Front** (Patented) for ease of entry and a smooth aerodynamic fit. Side alignment of zippers allows for tighter tuck on bike, and eliminates "bunching" for a better fit.
- 4. Zip-Free Washable Lining** No more stinky leathers! Now you can unzip the perspiration wicking mesh lining at the arms, legs and along the torso for partial removal to wash and dry (lining remains attached at ankle and cuffs).
- 5. CE Approved** Vantech armor-shoulders, elbow/forearms, knee, hips and backpad with high flex to allow a greater range of motion while retaining a high level of safety.
- 6. Combination** of leather and textiles for increased safety while providing a lightweight fatigue reducing motard garment.
- 7. Extra Large Stretch panels** in shoulders, back, and knees for maximum range of motion.
- 8. Expanding Waist** is standard on the SM22. The waist has adjustable elastic straps with velcro that will give you a perfect fit when pants are not attached to jacket.

Select Options SMO2 & SM22 Super Moto Suits

Select the options to be added to the basic suit as needed from those listed. Lettering and custom graphics will be specified in later pages.

#	Description of option	Price \$
AIRV	AIR-BAG OPTIONS + PARTS CO2 is released using a lanyard-pull trigger system. The CO2 cartridge and trigger are mounted either in a rear Hump or on the right front chest.	
	Installed system with Hump and Rear Lanyard Trigger	599.00
GP21 GP22 GP23	GP2 DIRECT-CONNECT CE ARMOR SYSTEM CE ARMOR is attached to the underside of closed cell pads. This is a velcro direct-connect to the garment shell system. Shaped foam exterior pads hold CE LEVEL 2 inserts in place against the wearer for maximum protection.	
	GP2 shoulder armor using shaped foam pad and CE Armor cap to provide wide and secure area coverage.	65.00 PAIR
	GP2 elbow forearm armor with shaped foam pad and CE elbow cap to provide large and secure coverage.	69.00 PAIR
	GP2 CE knee armor with shaped pad capped with CE Armor.	65.00 PAIR
PR1 PR2 PR3	G.P. FLOATING HARD-ARMOR OPTIONS F.A.S. (Floating Armor System) is the Vanson patented armor attachment system that allows the armor and garment to have limited slip which improves safety and comfort.	
	GP shoulder armor for suits	95.00 PAIR
	GP elbow forearm armor	95.00 PAIR
	GP knee armor	95.00 PAIR
42 42C	JACKET WAISTBAND OPTIONS Add full circumference leather waistband to jacket. Can be made straight or slightly dipped in the back. Front overlap is secured by either velcro or snaps. Circle below STRAIGHT BACK DIPPED BACK VELCRO SNAP	80.00 EACH
	Add full circumference solid CORDURA waistband to jacket. Can be made straight or slightly dipped in the back. Front overlap is secured by either velcro or snaps. Circle below STRAIGHT BACK DIPPED BACK VELCRO SNAP	40.00 EACH
42O2	2 PIECE SUIT JACKET TO PANTS CONNECTION OPTIONS Join a jacket and pants together to make a 2 piece suit. Change waist connection details.	
	Change waist zipper pull direction from Right-to-Left around torso to Left-to-Right for Left-handed riders.	10.00 XTRA
11	WRIST DETAILS Wrist details are very important to achieving the perfect fit with as little bulk as possible.	
	Velcro security tabs over the zip pull at wrist and/or ankle zippers. CIRCLE: WRIST ANKLE	20.00 PAIR
AS BOOT PEEZ	PANT + LOWER LEG + ANKLE DETAILS Pant options for security and comfort We use a cut-away in the front of your pant cuff to reduce bulk and restriction when you are tucked in race position.	25.00 PAIR
	Boot cut to fit over boots. Boot-cut flare.	25.00 PAIR
	Fly zipper in racing suits with a double zipper front	30.00 EACH
21 21A 21B 21C	PUCKS / KNEE SLIDERS Tear-off leather patch to cover knee puck velcro field cover matches suit graphics - includes velcro field Order with 21A and 21B	40.00 PAIR
	Knee Pucks with Velcro field	79.00 PAIR
	Velcro fields for knee pucks (velcro only)	40.00 PAIR
	Replacement Pucks only. Price per pair	49.00 PAIR
17C 17G 17H	LINING OPTIONS Lining options flagged as EACH are for full lining options in addition to the standard linings that come with garment.	
	Replacement Nylon Mesh Lining. Linings attach at wrist and ankles. 1 piece suits only. Remove to wash or change.	60.00 EACH
	Suit replacement/spare Replacement Rayon Lining. Linings attach at wrist and ankle. 1 piece suits only. Remove to wash or change.	60.00 EACH
	Rayon is suggested for cooler weather to help block wind. Replacement CoolMax Lining. Linings are attached at wrist and ankles. 1 piece suits only. Remove to wash or change. CoolMax is suggested for hot humid weather to help when perspiration wicking is desired.	60.00 EACH

#	Description of option	Price \$
17P	Make removable suit lining permanently sewn in eliminating zippers at the sleeves and lower legs.	20.00 XTRA
17X	No lining at all - raw leather interior of shell	40.00 XTRA
CARL	Single layer CARBONX lining instead of standard lining. Carbonx liners give heat and flame protection.	100.00 XTRA
20Y 20Z 46F	PROperf LEATHER - CHANGE AREAS + PANELS to PROperf PROperf leather is leather that has been machine perforated with small diameter holes spaced closely together. This allows maximum air flow into the garment. PROperf leather is also softer and more flexible as a result of perforating	
	PROperf knee expanders	20.00 XTRA
	PROperf back expander - allows ventilation and flexibility	20.00 XTRA
	PROperf shoulder expanders	50.00 XTRA
KC	POWERSTRETCH NYLON + ARAMID WOVEN PANELS Powerstretch reduces bulk in the same manner as spandex, but is woven using high strength cordura nylon and aramid to achieve a high resistance to abrasion.	
	Kevlar Cuffs replaces leather at your wrists to reduce bulk in your gloves. The cuff is 1.50 in high.	35.00 PAIR
ELEX	EXPANDER PANEL OPTIONS Expander panels are generally made using PROperf leather or Medium weight Firenze leather to make the expander sections as soft, comfortable and flexible as possible.	
	Elbow Expanders allow free bending at your elbow and reduces the pulling down on your shoulders. CIRCLE: HEAVY-MESH(check tech for ok) SOLID-LEATHER PROperf	50.00 PAIR
23 24	EMBROIDERED LOGO + SPONSOR PATCHES Personalize your suit with special patches.	
	Velcro sewn in square on back to accept #24 (Leather Patch) Square Size approx. 12 in wide x 12 in high (velcro pile) Old School. Vintage.	25.00 EACH
26 26B 26C	Square of leather with strips of velcro to mate up with #23 Square Size approx. 12 in Wide x 12 in High.(Velcro hook) Specify color, price does not include letters & numbers.	30.00 EACH
	Sewing on Sponsor Patch(es) provided by customer covered in clear plastic to help keep patch clean. Cost is per patch.	10.00 EACH
26D 26E	Sewing on patch - no cover	8.00 EACH
	Chenille VANSON patch - Classic script with flowing "V" Patches are handmade and are approx 13 in to 15 in long x 8 in high	60.00 EACH
26F 26P	VANSON STAR - two color approximately 1/2 in outline Approximate sizes CIRCLE: 15.5 in Wide x 13.75 in High 13 in Wide x 11.75 in High - 10.75 in Wide x 10 in High	49.00 EACH
	RED, WHITE and BLUE - U.S. FLAG Patch - Embroidered by Vanson. Placed on shoulders - always set with star field facing forward. Show location in section 4.	20.00 EACH
26G 26H	BLACK/GREY - First Responder - U.S. FLAG Patch Embroidered by Vanson. Placed on shoulders - always set with star field facing forward. Show location in section 4.	20.00 EACH
	U.S. Flag - leather patch (approx. 12 in x 8 in) 100% leather flag with full 50 star field sewn to back	89.00 EACH
26I 26J	Leather crossed VICTORY checkered flags - sewn on back	85.00 EACH
	Leather VICTORY checkered flag - small for chest/shoulder/glove	60.00 EACH
26K 26L	Reflective VANSON Oval (rubber Oval) Specify location and number in section 4.	N/C
	VANSON Competition Oval(s) (vinyl) Specify location and number in section 4.	N/C
26M 26N	Standard Cloth Embroidered VANSON Oval Specify location and number in section 4.	N/C
	Leather embroidered VANSON Oval - specify colors Specify location and number in section 4.	25.00 ACH
26O 26P	VANSON V in a circle - vintage Vanson logo from 1974 Circle is 3.25 in in diameter. Used for chest and shoulders	25.00 EACH
	VANSON V - vintage Vanson logo from 1974 V is 1.50 in Wide x 2.25 in High. Used on chest and shoulders.	20.00 EACH
DVO	Delete VANSON Ovals	100.00 EACH
10 10BA 10BB 10BC 10BF	VANSON LOGO LETTERING Traditional Vanson logos developed for competition leathers	
	VANSON extra logo-chargeable - show locations in section 4.	15.00 EACH
	Sized to fit - VANSON - across butt of suit or pants.	15.00 EACH
	Sized to fit - VANSON - across lower back.	15.00 EACH
	Small VANSON embroidered on both ends of collar.	N/C
	Small VANSON stitched to top sleeves along forearm	PAIR

Select Options SMO2 & SM22 Super Moto Suits - continued

#	Description of option	Price \$
10BS	Small VANSION letters stitched to under sleeves	30.00 PAIR
10BT	Sized to fit - Vanson - stitched to thighs.	30.00 PAIR
10BV	Small VANSION stitched around lower knee puck velcro field	30.00 PAIR
10F	Sponsor Credit for placing additional "VANSION" on garment	-30.00 N/C

HUMP OPTIONS

Humps were developed to fill in the void behind the helmet and thereby streamline the rider profile. Humps also serve to hide and protect gear such as Air-Bag mechanisms, radios and water camel systems.

HUMP	SLIPSTREAM pad in contoured closed cell non absorbent foam.	190.00 EACH
	Note: SLIPSTREAM pad may limit graphic sizing and availability on some suits and jackets.	

#	Description of option	Price \$
HUMR	Add RADIO cavity to Hump. Includes hollowing out the Hump to contain the radio with earpiece wire pass-through in the front face of the hump. Order Hump separately. Radio not included.	20.00 XTRA
HUMV	SLIPSTREAM Hump enhanced with flow through ventilation system from the front of the Hump through airways into the back of the garment.	190.00 EACH
HUMW	Camel back reservoir holds about 8 fl. oz. of water. Water line is led inside to side of neck where velcro hangers support it. Order Hump separately.	130.00 XTRA

TOTAL OPTIONS \$



CALIFORNIA PROP65 WARNING: This product can expose you to chemicals, substances and materials known to the State of California to cause cancer and birth defects or other reproductive harm.

ADVERTENCIA: Este producto puede exponerlo a productos quimicos, sustancias y materiales que el estado de California reconoce como causantes de cancer y defectos de nacimiento u otros danos reproductivos.



Custom Racing Suits • Experience the best!

951 Broadway, Fall River, MA 02724

Phone (508) 678-2000 • Fax (508) 677-6773

E-Mail: vanson@vansonleathers.com • Web Site: www.vansonleathers.com