

# Custom V Series Suit Guide



## Quality...from Professionals...for Professionals!

Proudly made in Fall River, MA, U.S.A. from domestic and imported materials. Often copied, never equaled.

### Industry Leading Patents

Over the years, we have developed new concepts for our riders, many have been patented. Here are a few of them...

- Ergonomic Fit
- Armor Systems
- Flow Through Ventilation
- Twin Front Zip

Currently Vanson holds over 10 unique patents.



### Comfort + Innovation

- = Confidence + Concentration
- = Safety + Speed
- = No Compromises



Custom Racing Suits • Experience the best!

951 Broadway, Fall River, MA 02724

Phone (508) 678-2000 • Fax (508) 677-6773

E-Mail: [vanson@vansonleathers.com](mailto:vanson@vansonleathers.com)

Web Site: [www.vansonleathers.com](http://www.vansonleathers.com)

## 7 Easy Steps

- 1 - Pick Product;**  select platform (style) to build.
- 2 - Order Options;**  to enhance platform to suit your needs.
- 3 - Detail Design\*;** Colors, Graphics, Stripes, Lettering & Logos. Use QR code to get to Measuring Guide.
- 4 - Add Accessories\*;**  Team Tee shirts, Balm, Gear bags, Tall + Chairs, Lanyards, CO<sub>2</sub> Cartridges, Airbag pulls, Bucket covers, Printed Garage jackets, Lanyards, Race gloves, VBox to send, Etc.
- 5 - Make Measurements\*;** Guaranteed fit, Fit assurance. Easy to use DIY form. Click QR code for Video on how to measure. Step by step directions. We check for a perfect outcome.
- 6 - Insure Investment\*;**  Buy Vanson's unique Asphalt Insurance. Use QR code for more information.
- 7 - Sign & Send\* Order with deposit.**

\* Use the Suit Guide & Order Form in the Custom Measuring Guide to design, accessorize, insure and record your measurements to complete your order.

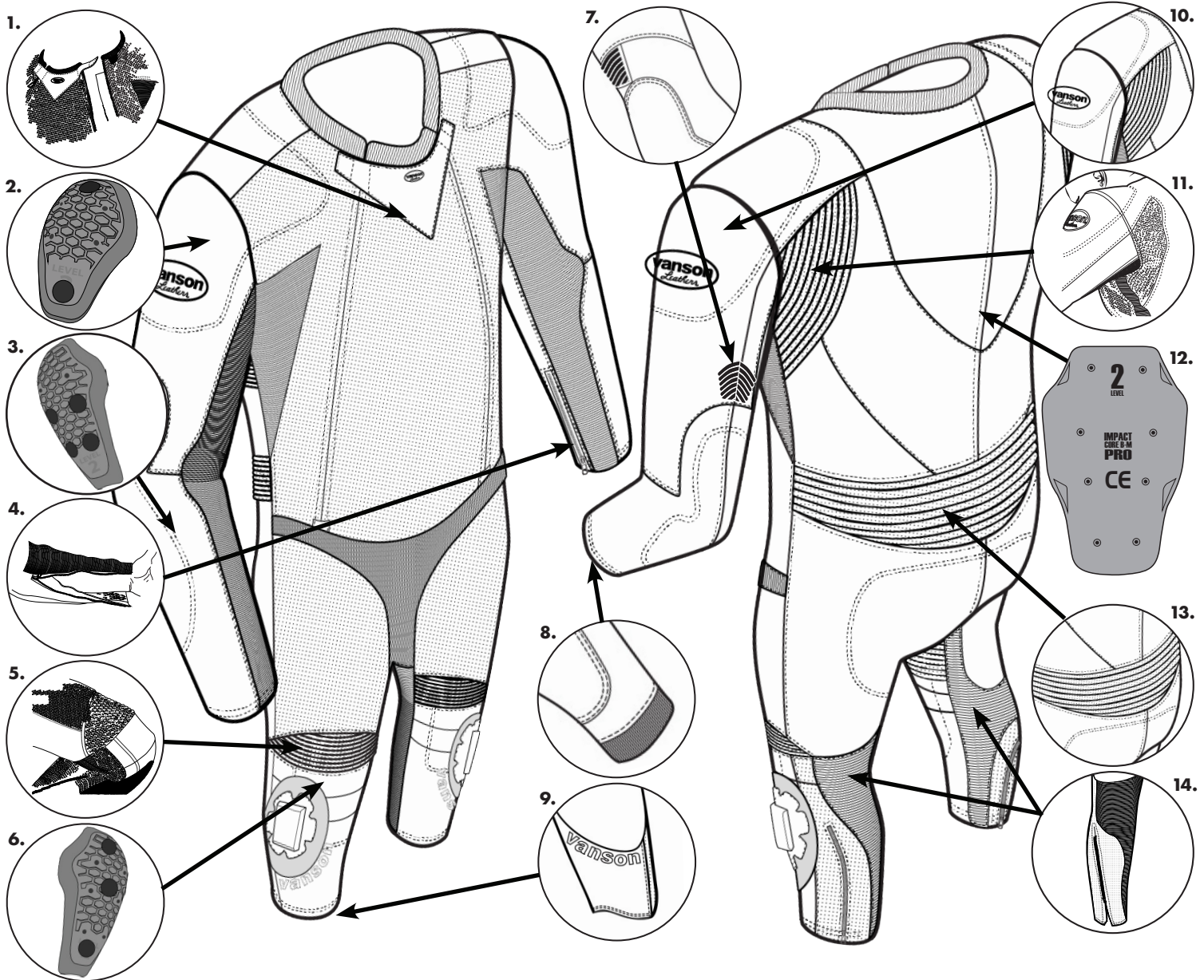
## Free Consultations!!

Call if you have questions, we are here to help. Or if you would like us to help guide you step by step through the Measurement Process, give us a call to set up an appointment for a Zoom or similar meeting.

# VO94

Custom Twin Zip  
or One Piece Suits  
starting from  
**\$2,199**

We incorporated over 50 years of technology and expertise to create the best custom road racing suit on the market. You'll find yourself getting up time after time thanking this suit for saving your body just as many have done before you.



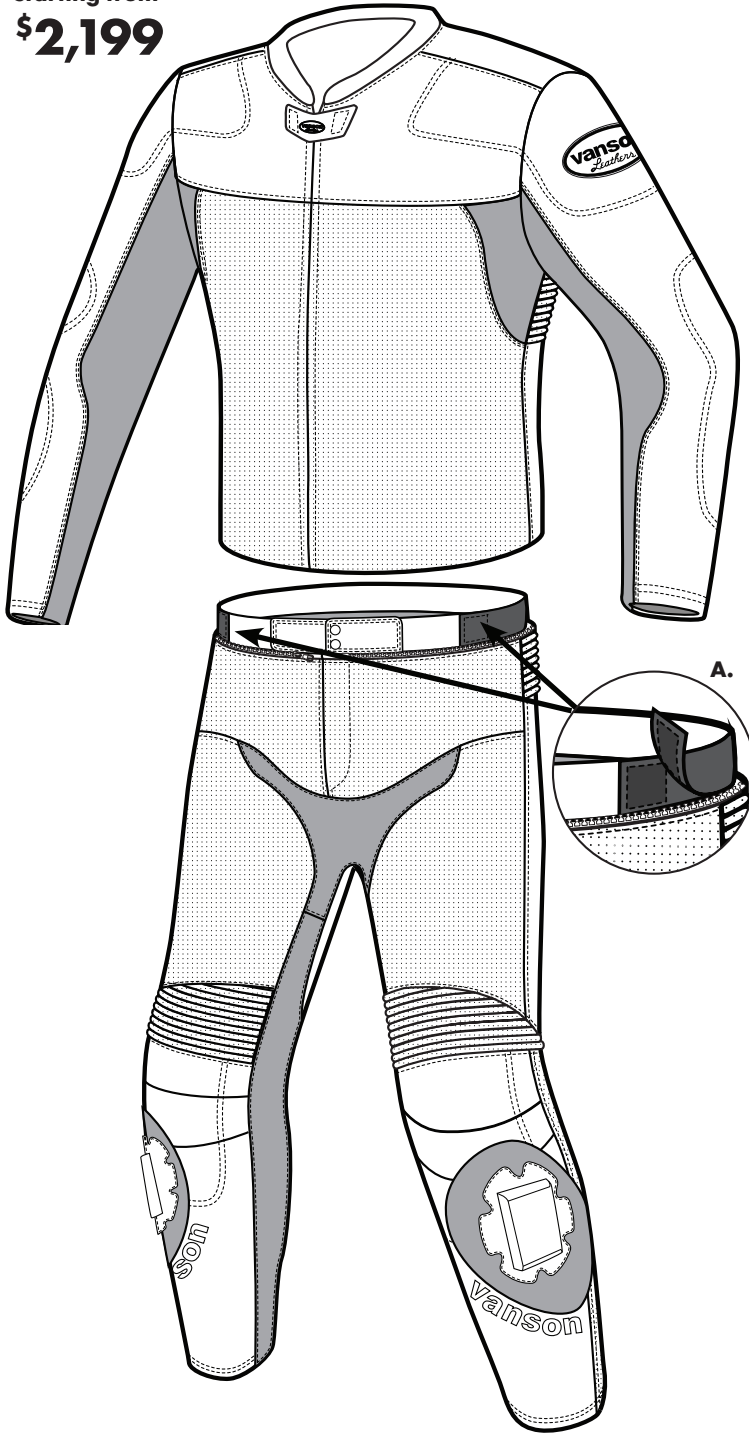
## MARK3 SERIES (VO94, V942, VE94, VL94) FEATURES

- 1. DOUBLE FRONT ZIPPERS** - If you want to be able to tuck without a bunch of suit digging into your stomach this is for you.
- 2. CE2 SHOULDER ARMOR** - If you've ever high sided and landed with your shoulder breaking your fall for you, this is the armor you know you want.
- 3. CE2 ELBOW ARMOR** - This gives you protection from the elbow all the way down your ulna. Ultimate arm protection!
- 4. FOREARM ZIPPER** - After a race you're going to want to escape your suit and arm pump makes that even more difficult than it initially was. Our forearm zip goes above the muscle to make disrobing a breeze.
- 5. KNEE EXPANDER** - We place these (tough as nails) leather expanders in the section of your knee that begs for extra material to ensure comfort and ease when getting in and out of your tuck.
- 6. CE2 KNEE ARMOR** - After cracking your knee on a peg, handle bar, or other hard surface (asphalt) you want protection that has multiple layers of impact dispersion. Our GP knee armor does just that.
- 7. ELBOW EXPANDERS (ELUX)** - Elbow expanders enhance bending at elbow and helps reduce pulling in the shoulders.
- 8. KEVLAR CUFFS (KC)** - Powerstretch cuffs at the wrist reduce bulk under your gloves.
- 9. ANKLE SCOOPS (AS)** - We create a cut-away in the front of the pant leg at the cuff to reduce bulk inside your boot.
- 10. EXTRA LEATHER LAYER** - We've seen enough suits to know where to place an extra layer of leather to limit any chances of burning through our hides to yours (on knee, shoulder, elbow, and seat).
- 11. SHOULDER EXPANDER** - When you are in a full tuck the last thing you want is to have the back of your suit pulling your back and your neck. Our shoulder expanders keep this kind of behavior to a minimum.
- 12. GP2 SPINE PROTECTOR** - This is going to allow you to spill and keep on racing. Unfortunately there are a lot of friends out there who suffer back injuries from weak back protection. We did our best to ensure that does not happen to any of our riders.
- 13. LOWER BACK EXPANDER** - When you're in a tuck we want your back to breathe while being protected, that's why we make 3-3.5 oz. perforated leather expanders.
- 14. KEVLAR** - Your calves do a lot of work during a race and because of that they sweat and expand. We place kevlar in those spots to expand with, ventilate, and protect the calf.



# V942

Custom Single Zip  
Two Piece Suit  
starting from  
**\$2,199**

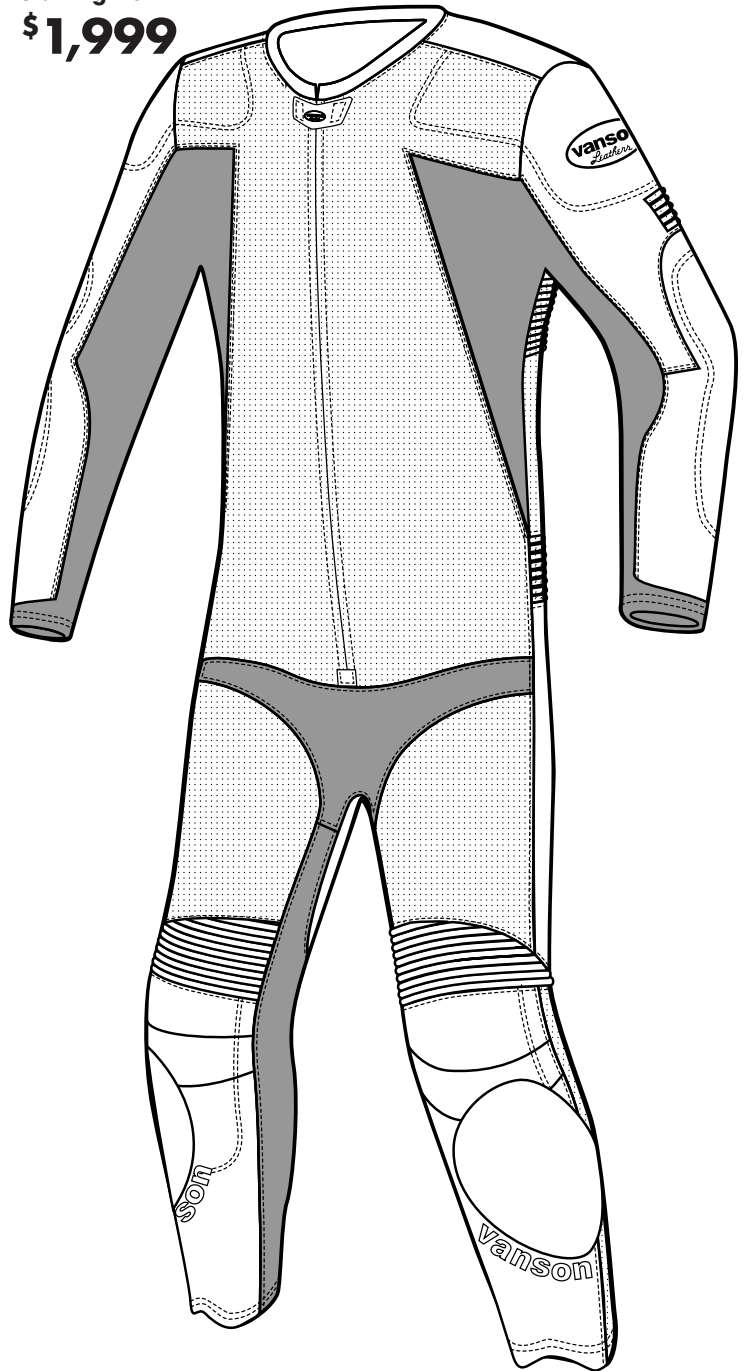


**V942** If you love our VO and VE but you don't like having to put a one piece on and off, our V942 is the suit for you. With all of the technology and expertise as our one piece suits you will be consistently impressed and amazed at how our suit grows with you. Get ventilation and freedom of movement with our combination of perforated leather and kevlar in this amazing suit.

**A. Expanding Waist** - Expandable waist with adjustable elastic strap with velcro to give you a perfect fit when pants are not attached to jacket

# VE94 & VL94 Women's Model

Custom Single Zip  
One Piece Suit  
starting from  
**\$1,999**



**VE94** We have taken a minimalist approach to our VO94 and created the single-zippered VE94. This suit offers the same incredible amounts of protection and intelligent design as the VO94 keeps you running back to your bike to get back your podium spot.

**VL94** Our awesome technology is also fine tuned for women. We accommodate the structure of the female body to offer comfort and protection in one of the most demanding of all motorsports.

- F.A.S. GP Armor
- All Brass Hardware
- Expander Panels
- Washable Lining
- Flexible Knee Design
- Low Bulk Wrist And Ankle Finish



**CALIFORNIA PROP65 WARNING:** This product can expose you to chemicals, substances and materials known to the State of California to cause cancer and birth defects or other reproductive harm.

**ADVERTENCIA:** Este producto puede exponerlo a productos quimicos, sustancias y materiales que el estado de California reconoce como causantes de cancer y defectos de nacimiento u otros danos reproductivos.

# Select Options MARK3 (VO94-VE94-VL94-V942) Road Racing Suit

#	Description of option	Price \$
<b>AIR-BAG OPTIONS + PARTS</b>		
<b>CO2 is released using a lanyard-pull trigger system. The CO2 cartridge and trigger are mounted either in a rear Hump or on the right front chest.</b>		
ABCO	Extra CO2 canisters to replace and reload Air-Bag System.	29.00
AIRE	Air bag expanders-front/back/sides. Standard lining. Air bag and airbag lining are sold separately	450.00 1
AIRF	Installed system with Right chest Lanyard and Trigger	599.00
AIRV	Installed system with Hump and Rear Lanyard Trigger Added to Hump - Hump sold separately	599.00
TET1	Xtra tether for front air bag	30.00
TET2	Xtra tether for Hump air bag	40.00
<b>GP2 DIRECT-CONNECT CE ARMOR SYSTEM</b>		
<b>CE ARMOR is attached to the outside of closed cell pads. Direct-Connect Velcro holds the Armor + Pad in position. Shaped closed-cell pads keep the armor from shifting and serve to help absorb impact energy.</b>		
GP21	GP2 CE Level 2 Shoulder armor	65.00 PAIR
GP22	GP2 CE Level 2 Elbow armor	69.00 PAIR
GP23	GP2 CE Level 2 Knee armor	65.00 PAIR
GP25	GP2 CE Level 1 Hip armor	45.00 PAIR
GP31	SHAPED GP2 PAD + D3O GHOST CE Level 2 Shoulder armor	69.00 PAIR
GP32	SHAPED GP2 PAD + D3O GHOST CL Level 2 Elbow armor	69.00 PAIR
GP33	SHAPED GP2 PAD + D3O GHOST CE Level 2 Knee armor	69.00 PAIR
GP35	SHAPED GP2 PAD + D3O GHOST CE Level 2 Hip armor	59.00 PAIR
<b>G.P. FLOATING HARD-ARMOR OPTIONS</b>		
<b>F.A.S. ( Floating Armor System ) is Vanson's patented armor attachment system that allows the armor and garment to have limited slip improving safety and comfort.</b>		
GP11	GP F.A.S. Hard shoulder armor + shaped pad	69.00 PAIR
GP12	GP F.A.S. Hard elbow armor	79.00 PAIR
GP13	GP F.A.S. Hard knee armor	69.00 PAIR
<b>DIRECT-CONNECT CE ARMOR SYSTEM</b>		
<b>DIRECT-CONNECT ARMOR - CE rated armor is connected directly to the shell with discrete velcro fields.</b>		
CEG1	Direct-Connect D3O GHOST CE Level 2 Shoulder armor	69.00 PAIR
CEG2	Direct-Connect D3O GHOST CE Level 2 Elbow armor	69.00 PAIR
CEG3	Direct-Connect D3O GHOST CE Level 2 Knee armor	69.00 PAIR
CEG5	Direct-Connect D3O GHOST CE Level 2 Hip armor	69.00 PAIR
<b>BACK-PADS - Used for Protection along spine.</b>		
PRO4	Articulated scale back pad - F.A.S. attachment to lining	129.00 EACH
<b>EPAULET / BELTS / SUSPENDER OPTIONS</b>		
40A	Suspender buttons - set to waistband of pants - four sets of two buttons each to attach suspenders #40S	25 SET
SUSP	Suspenders - also sold separately - X elastic pattern 65	EACH
SUSP	Four flat leather ends - with 2 Button-Holes each end.	
<b>JACKET WAISTBAND OPTIONS</b>		
42	Add full circumference leather waistband to jacket. Can be made straight or slightly dipped in the back. Front over-lap is secured by either velcro or snaps. Circle below	80.00 EACH
	STRAIGHT BACK DIPPED BACK VELCRO SNAP	
<b>2 PIECE SUIT JACKET TO PANTS CONNECTION OPTIONS</b>		
<b>Join a jacket and pants together to make a 2 piece suit. Change waist connection details.</b>		
42O2	Change waist zipper pull direction from Right-to-Left around torso to Left-to-Right for Left-handed riders.	10.00 XTRA
<b>PANT + LOWER LEG + ANKLE DETAILS - Options for security and comfort</b>		
AS	We use a cut-away in the front of your pant cuff to reduce bulk and restriction when you are tucked in race position.	25.00 PAIR
PEEZ	Fly zipper in racing suits with a double zipper front	30.00 EACH
<b>PUCKS / KNEE SLIDERS</b>		
21A	Knee Pucks with Velcro field	79.00 PAIR
21B	Velcro fields for knee pucks (velcro only)	40.00 PAIR
21C	Replacement Pucks only. Price per pair	49.00 PAIR
<b>LINING OPTIONS</b>		
<b>Lining options flagged as EACH are for full lining options in addition to the standard linings that come with garment.</b>		
17C	Replacement Nylon Mesh Lining. Linings attach at wrist and ankles. 1 piece suits only. Remove to wash or change. Suit replacement/spare	60.00 EACH
17G	Replacement Rayon Lining. Linings attach at wrist and ankle. 1 piece suits only. Remove to wash or change. Rayon is suggested for cooler weather to help block wind.	60.00 EACH
17H	Replacement CoolMax Lining. Linings are attached at wrist and ankles. 1 piece suits only. Remove to wash or change. CoolMax is suggested for hot humid weather to help when perspiration wicking is desired.	60.00 EACH
17P	Make removable suit lining permanently sewn in eliminating zippers at the sleeves and lower legs.	20.00 XTRA
17X	No lining at all - raw leather interior of shell	40.00 XTRA
CARL	Single layer CARBONX lining instead of standard lining. Carbonx liners give heat and flame protection.	100.00 XTRA
MAND	Customer Name - Build-Date - Unit-No.: Printed on leather patch and sewn to lining	25.00 EACH
<b>PERFORATIONS ADDED TO SOLID PANELS FOR EXTRA VENTILATION</b>		
<b>These are larger holes, die cut, farther apart than PROperf. This allows the perforation of an otherwise solid leather panel. This is good for areas that need a little extra air flow.</b>		
20F	PERFORATIONS - on body, behind side seam at under arm area	20.00 PAIR
46D	PERFORATIONS - on rear at side seams - shoulder to waist	35.00 PAIR

#	Description of option	Price \$
<b>PROperf LEATHER - CHANGE AREAS + PANELS to PROperf</b>		
<b>PROperf leather is leather that has been machine perforated with small diameter holes spaced closely together. This allows maximum air flow into the garment. PROperf leather is also softer and more flexible as a result of perforating</b>		
20X	PROperf lower front leg - from knee to ankle	20.00 XTRA
46E	PROperf under sleeve panels	20.00 XTRA
<b>POWERSTRETCH NYLON + ARAMID WOVEN PANELS</b>		
<b>Powerstretch reduces bulk in the same manner as spandex, but is woven using high strength cordura nylon and aramid to achieve a high resistance to abrasion.</b>		
KC	Kevlar Cuffs replaces leather at your wrists to reduce bulk in your gloves. The cuff is 1.50 in high.	35.00 PAIR
<b>EXPANDER PANEL OPTIONS</b>		
<b>Expander panels are generally made using PROperf leather or Medium weight Firenze leather to make the expander sections as soft, comfortable and flexible as possible.</b>		
ELEX	Elbow Expanders allow free bending at your elbow and reduces the pulling down on your shoulders. CIRCLE: HEAVY-MESH(check tech for ok) SOLID-LEATHER PROperf	50.00 PAIR
<b>EMBROIDERED LOGO + SPONSOR PATCHES</b>		
<b>Personalize your suit with special patches.</b>		
23	Velcro sewn in square on back to accept #24 (Leather Patch) Square Size approx. 12 in wide x 12 in high (velcro pile) Old School. Vintage.	25.00 EACH
24	Square of leather with strips of velcro to mate up with #23 Square Size approx. 12 in Wide x 12 in High.(Velcro hook) Specify color, price does not include letters & numbers.	30.00 EACH
26	Sewing on Sponsor Patch(es) provided by customer covered in clear plastic to help keep patch clean. Cost is per patch.	10.00 EACH
26B	Sewing on patch - no cover	8.00 EACH
26C	Chenille VANSON patch - Classic script with flowing V™ Patches are handmade and are approx 13 in to 15 in long x 8 in high	60.00 EACH
26D	VANSON STAR - two color approximately 1/2 in outline Approximate sizes CIRCLE: 15.5 in Wide x 13.75 in High 13 in Wide x 11.75 in High - 10.75 in Wide x 10 in High	49.00 EACH
26E	RED, WHITE and BLUE - U.S. FLAG Patch - Embroidered by Vanson. Placed on shoulders - always set with star field facing forward. Show location in section 4.	20.00 EACH
26F	BLACK/GREY - First Responder - U.S. FLAG Patch Embroidered by Vanson. Placed on shoulders - always set with star field facing forward. Show location in section 4.	20.00 EACH
26P	U.S. Flag - leather patch (approx. 12 in x 8 in) 100% leather flag with full 50 star field sewn to back	89.00 EACH
26R	Leather crossed VICTORY checkered flags - sewn on back	85.00 EACH
26S	Leather VICTORY checkered flag - small for chest/shoulder/glove	60.00 EACH
26T	Reflective VANSON Oval (rubber Oval) Specify location and number in section 4.	N/C
26TA	VANSON Competition Oval(s) (vinyl) Specify location and number in section 4.	N/C
26TE	Standard Cloth Embroidered VANSON Oval Specify location and number in section 4.	N/C
26TL	Leather embroidered VANSON Oval - specify colors Specify location and number in section 4.	25.00 ACH
26TP	printed Vanson oval-specify colors	25.00 EACH
26V	VANSON V in a circle - vintage Vanson logo from 1974 Circle is 3.25 in in diameter. Used for chest and shoulders	25.00 EACH
26VV	VANSON V - vintage Vanson logo from 1974 V is 1.50 in Wide x 2.25 in High. Used on chest and shoulders.	20.00 EACH
DVO	Delete VANSON Ovals	100.00
<b>VANSON LOGO LETTERING</b>		
<b>Traditional Vanson logos developed for competition leathers</b>		
10	VANSON extra logo-chargeable - show locations in section 4.	15.00 EACH
10BA	Sized to fit - VANSON - across butt of suit or pants.	15.00 EACH
10BB	Sized to fit - VANSON - across lower back.	30.00 EACH
10BC	Small VANSON embroidered on both ends of collar.	STD
10BF	Small VANSON stitched to top sleeves along forearm	15.00 PAIR
10BS	Small VANSON letters stitched to under sleeves	15.00 PAIR
10BT	Sized to fit - Vanson - stitched to thighs.	30.00 PAIR
10BV	Small VANSON stitched around lower knee puck velcro field	30.00 PAIR
10F	Sponsor Credit for placing additional VANSON™ on garment™	-30.00 N/C
<b>HUMP OPTIONS</b>		
<b>Humps were developed to fill in the void behind the helmet and thereby streamline the rider profile. Humps also serve to hide and protect gear such as Air-Bag mechanisms, radios and water camel systems.</b>		
HUMP	SLIPSTREAM pad in contoured closed cell non absorbent foam. Note: SLIPSTREAM pad may limit graphic sizing and availability on some suits and jackets.	190.00 EACH
HUMR	Add RADIO cavity to Hump. Includes hollowing out the Hump to contain the radio with earpiece wire pass-through in the front face of the hump. Order Hump separately. Radio not included.	20.00 XTRA
HUMV	SLIPSTREAM Hump enhanced with flow through ventilation system from the front of the Hump through airways into the back of the garment.	190.00 EACH
HUMW	Camel back reservoir holds about 8 fl. oz. of water. Water line is led inside to side of neck where velcro hangers support it. Order Hump separately.	130.00 XTRA

TOTAL OPTIONS \$