

# Custom V Series Suit Guide



## Quality...from Professionals...for Professionals!

Vanson Leathers understands professional racers. They depend on premium quality protective garments, fast knowledgeable service and styles and graphics to showcase the racer and his or her sponsors.

Vanson Custom Suits are made from top-grain U.S. cowhide approximately **3 1/2 oz.** per square foot and **1.4-1.7 mm**. We are constantly developing new features and experimenting with new materials. This ensures that we can offer the best product and service to professional riders. Vanson offers a complete "menu" of options and lettering styles to choose from, allowing you to design the suit you want.

## How to use this Form

Select the **Style** of suit based on the standard features which meet your racing needs. For each Style, there is a list of available **Options**. These Options are available at an additional cost to the base price of the suit. Select the **Style** then the **Options**. Next, you can **Draw Your Own Design** or choose from the many standard **Graphic** designs we have provided for you. Color selections can be made from Vanson's wide selection of drum-dyed colors.

Sample leather color swatches are available upon request. Remember, you can change colors at any seam line for **no extra charge!** To add a personalized touch to your custom suit use the **Lettering and Logos** section.

**Note: Foils and Special Effects leather cost 15% more.** Be sure to show the placement of any custom lettering in the spaces provided. Then, using the special **Vanson Measuring Device**, complete the **Take Your Measurements** section. Be sure to follow the directions carefully and fill out all the measurements in this section. In order to verify your measurements, it is **required** that you include your **Height, Weight, and Age**.

Finally, using the Custom Measuring Guide, take your measurements, complete the form and your order by filling out the **Shipping Information** and adding the cost from each section including any options to determine the **Total Cost** of your suit.

## The Proof is in the Patents

Buying a Vanson suit is purchasing a unique piece of leather working history. Over the years, as we have developed our own, unique way of producing a better quality garment we've come up with entirely new concepts for our riders. As these innovations have been discovered and perfected, they have been patented.

Currently **Vanson holds over 10 unique patents**. These cover everything from the way we set the zippers in our garments for our venting system to our Floating Armor System. Carefully designed for your comfort and safety when working with our superior materials, we always seek to innovate without sacrificing the longevity of our suits.



Custom Racing Suits • Experience the best!

951 Broadway, Fall River, MA 02724

Phone (508) 678-2000 • Fax (508) 677-6773

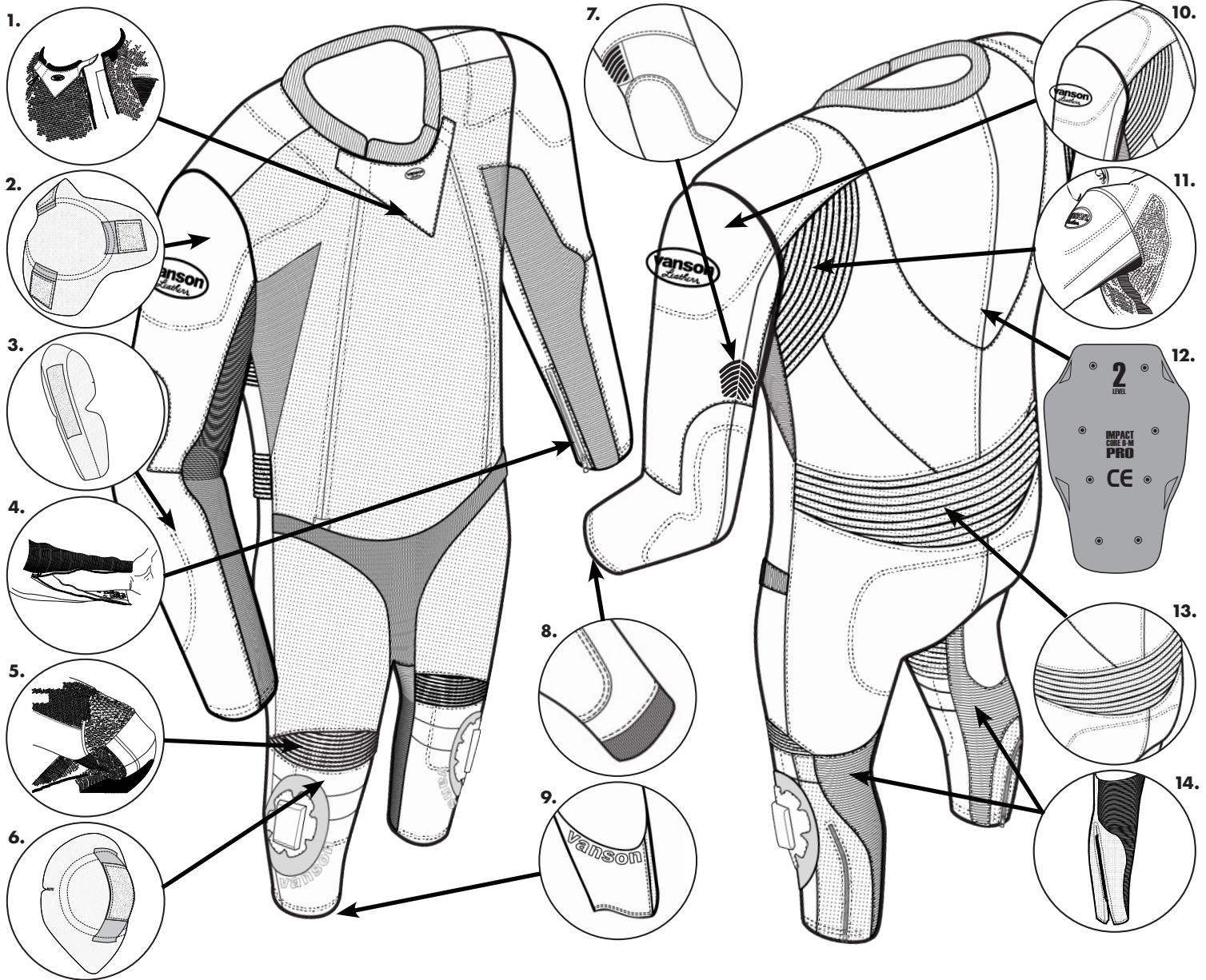
E-Mail: [vanson@vansonleathers.com](mailto:vanson@vansonleathers.com) • Web Site: [www.vansonleathers.com](http://www.vansonleathers.com)

**NOTE: You must use the Custom Measuring Guide to Design and Record Your Measurements Along with the Order Form**

# VO93

Custom Suit  
starting from  
**\$1,999**

We incorporated over 48 years of technology and expertise to create the best custom road racing suit on the market. You'll find yourself getting up time after time thanking this suit for saving your body just as many have done before you.



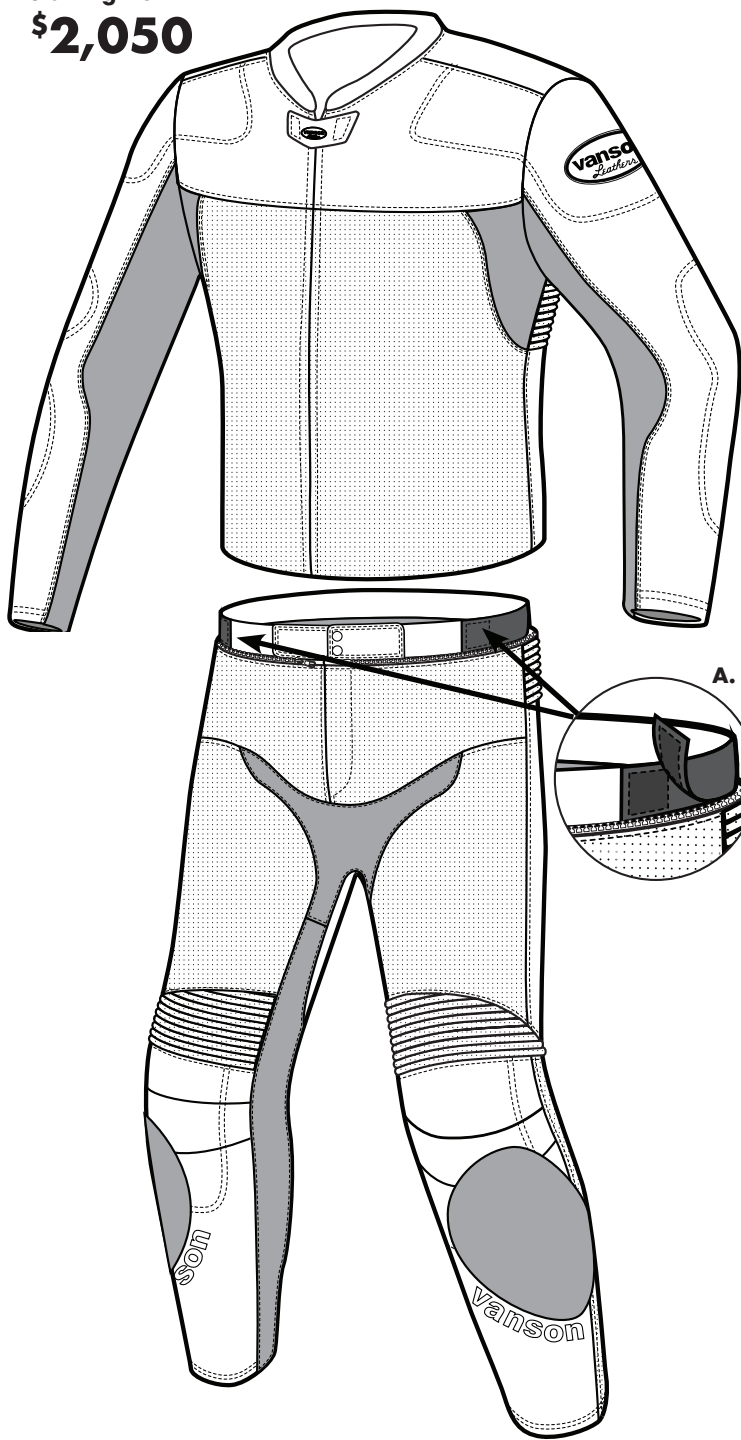
## MARK3 SERIES (VO93, V932, VE93) FEATURES

- 1. DOUBLE FRONT ZIPPERS** - If you want to be able to tuck without a bunch of suit digging into your stomach this is for you.
- 2. GP2 SHOULDER ARMOR** - If you've ever high sided and landed with your shoulder breaking your fall for you, this is the armor you know you want.
- 3. GP2 ELBOW ARMOR** - This gives you protection from the elbow all the way down your ulna. Ultimate arm protection!
- 4. FOREARM ZIPPER** - After a race you're going to want to escape your suit and arm pump makes that even more difficult than it initially was. Our forearm zip goes above the muscle to make disrobing a breeze.
- 5. KNEE EXPANDER** - We place these (tough as nails) leather expanders in the section of your knee that begs for extra material to ensure comfort and ease when getting in and out of your tuck.
- 6. GP2 KNEE ARMOR** - After cracking your knee on a peg, handle bar, or other hard surface (asphalt) you want protection that has multiple layers of impact dispersion. Our GP knee armor does just that.
- 7. ELBOW EXPANDERS (ELUX)** - Elbow expanders enhance bending at elbow and helps reduce pulling in the shoulders.
- 8. KEVLAR CUFFS (KC)** - Powerstretch cuffs at the wrist reduce bulk under your gloves.
- 9. ANKLE SCOOPS (AS)** - We create a cut-away in the front of the pant leg at the cuff to reduce bulk inside your boot.
- 10. EXTRA LEATHER LAYER** - We've seen enough suits to know where to place an extra layer of leather to limit any chances of burning through our hides to yours (on knee, shoulder, elbow, and seat).
- 11. SHOULDER EXPANDER** - When you are in a full tuck the last thing you want is to have the back of your suit pulling your back and your neck. Our shoulder expanders keep this kind of behavior to a minimum.
- 12. GP2 SPINE PROTECTOR** - This is going to allow you to spill and keep on racing. Unfortunately there are a lot of friends out there who suffer back injuries from weak back protection. We did our best to ensure that does not happen to any of our riders.
- 13. LOWER BACK EXPANDER** - When you're in a tuck we want your back to breathe while being protected, that's why we make 3-3.5 oz. perforated leather expanders.
- 14. KEVLAR** - Your calves do a lot of work during a race and because of that they sweat and expand. We place kevlar in those spots to expand with, ventilate, and protect the calf.



# V932

Custom Suit  
starting from  
**\$2,050**

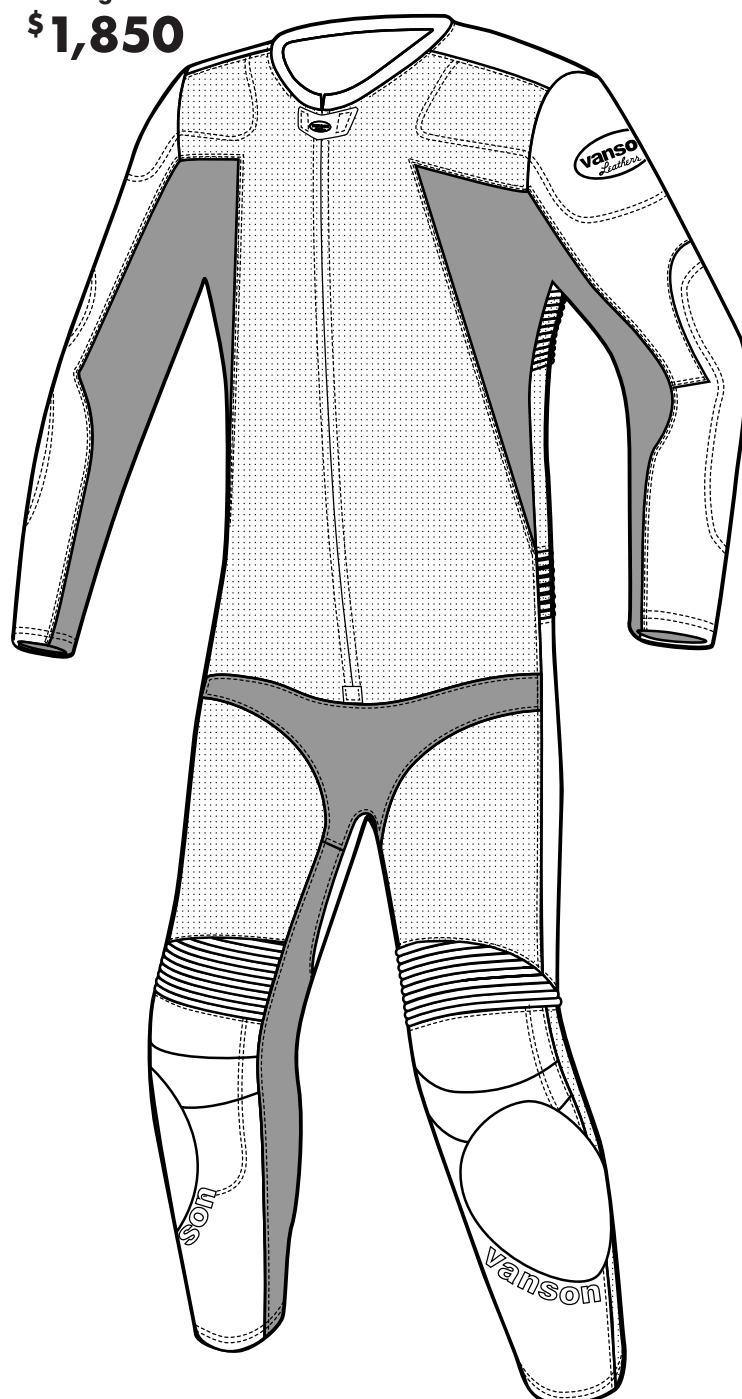


**V932** If you love our VO and VE but you don't like having to put a one piece on and off, our V932 is the suit for you. With all of the technology and expertise as our one piece suits you will be consistently impressed and amazed at how our suit grows with you. Get ventilation and freedom of movement with our combination of perforated leather and kevlar in this amazing suit.

**A. Expanding Waist** - Expandable waist with adjustable elastic strap with velcro to give you a perfect fit when pants are not attached to jacket

# VE93 & VL93 Women's Model

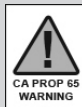
Custom Suit  
starting from  
**\$1,850**



**VE93** We have taken a minimalist approach to our V093 and created the single-zipped VE93. This suit offers the same incredible amounts of protection and intelligent design as the VO93 keeps you running back to your bike to get back your podium spot.

**VL93** Our awesome technology is also fine tuned for women. We accommodate the structure of the female body to offer comfort and protection in one of the most demanding of all motorsports.

- F.A.S. GP Armor
- All Brass Hardware
- Expander Panels
- Washable Lining
- Flexible Knee Design
- Low Bulk Wrist And Ankle Finish

 **CALIFORNIA PROP65 WARNING:** This product can expose you to chemicals, substances and materials known to the State of California to cause cancer and birth defects or other reproductive harm.  
**ADVERTENCIA:** Este producto puede exponerlo a productos quimicos, sustancias y materiales que el estado de California reconoce como causantes de cancer y defectos de nacimiento u otros danos reproductivos.

## Select Options MARK3 (VO93-VE93-VL93-V932) Road Racing Suit

#	Description of option	Price \$
<b>AIR-BAG OPTIONS + PARTS</b>		
AIRV	CO2 is released using a lanyard-pull trigger system. The CO2 cartridge and trigger are mounted either in a rear Hump or on the right front chest. Installed system with Hump and Rear Lanyard Trigger	599.00
<b>GP2 DIRECT-CONNECT CE ARMOR SYSTEM</b> is attached to the underside of closed cell pads. This is a velcro direct-connect to the garment shell system Shaped foam exterior pads hold CE LEVEL 2 inserts in place against the wearer for maximum protection.		
GP21	GP2 shoulder armor using shaped foam pad and CE Armor cap	65.00 PAIR
GP22	GP2 elbow forearm armor with shaped foam pad and CE elbow cap to provide large and secure coverage.	69.00 PAIR
GP23	GP2 CE knee armor with shaped pad capped with CE Armor.	65.00 PAIR
<b>G.P. FLOATING HARD-ARMOR OPTIONS</b>		
F.A.S. ( Floating Armor System ) is the Vanson patented armor attachment system that allows the armor and garment to have limited slip which improves safety and comfort.		
PR1	GP shoulder armor for suits	95.00 PAIR
PR2	GP elbow forearm armor	95.00 PAIR
PR3	GP knee armor	95.00 PAIR
<b>BACKPADS</b> used for Protection along spine.		
PRO4	Articulated scale back pad - F.A.S. attachment to lining	129.00 EACH
VA4V	VANTECH back pad - enclosed in a rayon envelope for protection. Envelope attaches with velcro to lining + shell	55.00 EACH
<b>JACKET WAISTBAND OPTIONS</b>		
42	Add full circumference leather waistband to jacket. Can be made straight or slightly dipped in the back. Front overlap is secured by either velcro or snaps. Circle below STRAIGHT BACK    DIPPED BACK    VELCRO    SNAP	80.00 EACH
<b>2 PIECE SUIT JACKET TO PANTS CONNECTION OPTIONS</b>		
Join a jacket and pants together to make a 2 piece suit. Change waist connection details.		
42O2	Change waist zipper pull direction from Right-to-Left	10.00 XTRA
42O2	around torso to Left-to-Right for Left-handed riders.	
<b>PANT + LOWER LEG + ANKLE DETAILS</b> for security and comfort		
AS	We use a cut-away in the front of your pant cuff to reduce bulk and restriction when you are tucked in race position.	25.00 PAIR
PEEZ	Fly zipper in racing suits with a double zipper front	30.00 EACH
<b>PUCKS / KNEE SLIDERS</b>		
21	Tear-off leather patch to cover knee puck velcro field cover matches suit graphics - includes velcro field	40.00 PAIR
21	Order with 21A and 21B	
21A	Knee Pucks with Velcro field	79.00 PAIR
21B	Velcro fields for knee pucks (velcro only)	40.00 PAIR
21C	Replacement Pucks only. Price per pair	49.00 PAIR
21D	Sidocar passenger seat or shoulder velcro patch with slider Show placement in design section. Price for each location.	75.00 EACH
<b>LINING OPTIONS</b>		
Lining options flagged as EACH are for full lining options in addition to the standard linings that come with garment.		
17C	Replacement Nylon Mesh Lining. Linings attach at wrist and ankles. 1 piece suits only. Remove to wash or change. Suit replacement/ spare	60.00 EACH
17G	Replacement Rayon Lining. Linings attach at wrist and ankle. 1 piece suits only. Remove to wash or change. Rayon is suggested for cooler weather to help block wind.	60.00 EACH
17H	Replacement CoolMax Lining. Linings are attached at wrist and ankles. 1 piece suits only. Remove to wash or change. CoolMax is suggested for hot humid weather to help when perspiration wicking is desired.	60.00 EACH
17P	Make removable suit lining permanently sewn in eliminating zippers at the sleeves and lower legs.	20.00 XTRA
17X	No lining at all - raw leather interior of shell	40.00 XTRA
CARL	Single layer CARBONX lining instead of standard lining. Carbonx liners give heat and flame protection.	100.00 XTRA
<b>PERFORATIONS ADDED TO SOLID PANELS FOR EXTRA VENTILATION</b>		
These are larger holes, die cut, farther apart than PROperf This allows the perforation of an otherwise solid leather panel. This is good for areas that need a little extra air flow.		
20F	PERFORATIONS - on body, behind side seam at under arm area	20.00 PAIR
46D	PERFORATIONS - on rear at side seams - shoulder to waist	35.00 PAIR
<b>PROperf LEATHER - CHANGE AREAS + PANELS TO PROperf</b>		
PROperf leather is leather that has been machine perforated with small diameter holes spaced closely together. This allows maximum air flow into the garment.		
20X	PROperf lower front leg - from knee to ankle	20.00 XTRA
46E	PROperf under sleeve panels	20.00 XTRA

#	Description of option	Price \$
KC	POWERSTRETCH NYLON + ARAMID WOVEN PANELS - reduces bulk in the same manner as spandex, but is woven using high strength cordura nylon and aramid to achieve a high resistance to abrasion. Kevlar Cuffs replaces leather at your wrists to reduce bulk in your gloves. The cuff is 1.50 in high.	35.00 PAIR
<b>EXPANDER PANEL OPTIONS</b>		
Expander panels are generally made using PROperf leather or Medium weight Firenze leather to make the expander sections as soft, comfortable and flexible as possible.		
ELEX	Elbow Expanders allow free bending at your elbow and reduces the pulling down on your shoulders. CIRCLE: HEAVY-MESH(check tech for ok)    SOLID-LEATHER    PROperf	50.00 PAIR
<b>EMBROIDERED LOGO + SPONSOR PATCHES</b>		
23	Velcro sewn in square on back to accept #24 (Leather Patch) Square Size approx. 12 in wide x 12 in high (velcro pile) Old School.	25.00 EACH
24	Square of leather with strips of velcro to mate up with #23 Square Size approx. 12 in Wide x 12 in High.(Velcro hook) Specify color, price does not include letters & numbers.	30.00 EACH
26	Sewing on Sponsor Patch(es) provided by customer covered in clear plastic to help keep patch clean. Cost is per patch.	10.00 EACH
26B	Sewing on patch - no cover	8.00 EACH
26C	Chenille VANSON patch - Classic script with flowing "V" Patches are handmade and are approx 13 in to 15 in long x 8 in high	60.00 EACH
26D	VANSON STAR - two color approximately 1/2 in outline Approximate sizes CIRCLE: 15.5 in Wide x 13.75 in High 13 in Wide x 11.75 in High - 10.75 in Wide x 10 in High	49.00 EACH
26E	RED, WHITE and BLUE - U.S. FLAG Patch - Embroidered by Vanson. Placed on shoulders - always set with star field facing forward. Show location in section 4.	20.00 EACH
26F	BLACK/GREY - First Responder - U.S. FLAG Patch Embroidered by Vanson. Placed on shoulders - always set with star field facing forward. Show location in section 4.	20.00 EACH
26P	U.S. Flag - leather patch (approx. 12 in x 8 in) 100% leather flag with full 50 star field sewn to back	89.00 EACH
26R	Leather crossed VICTORY checkered flags - sewn on back	85.00 EACH
26S	Leather VICTORY checkered flag - small for chest/shoulder/glove	60.00 EACH
26T	Reflective VANSON Oval (rubber Oval) Specify location and number in section 4.	N/C
26TA	VANSON Competition Oval(s) (vinyl) Specify location and number in section 4.	N/C
26TE	Standard Cloth Embroidered VANSON Oval Specify location and number in section 4.	N/C
26TL	Leather embroidered VANSON Oval - specify colors Specify location and number in section 4.	25.00 ACH
26V	VANSON V in a circle - vintage Vanson logo from 1974 Circle is 3.25 in in diameter. Used for chest and shoulders	25.00 EACH
26VV	VANSON V - vintage Vanson logo from 1974 V is 1.50 in Wide x 2.25 in High. Used on chest and shoulders.	20.00 EACH
DVO	Delete VANSON Ovals	100.00 EACH
<b>VANSON LOGO LETTERING</b>		
Traditional Vanson logos developed for competition leathers		
10	VANSON extra logo-chargeable - show locations in section 4.	15.00 EACH
10BA	Sized to fit - VANSON - across butt of suit or pants.	15.00 EACH
10BB	Sized to fit - VANSON - across lower back.	15.00 EACH
10BC	Small VANSON embroidered on both ends of collar.	N/C
10BF	Small VANSON stitched to top sleeves along forearm	PAIR
10BS	Small VANSON letters stitched to under sleeves	30.00 PAIR
10BT	Sized to fit - Vanson - stitched to thighs.	30.00 PAIR
10BV	Small VANSON stitched around lower knee puck velcro field	30.00 PAIR
10F	Sponsor Credit for placing additional "VANSON" on garment	-30.00 N/C
<b>HUMP OPTIONS</b> - Humps were developed to fill in the void behind the helmet and thereby streamline the rider profile. Humps also serve to hide and protect gear such as Air-Bag mechanisms, radios and water camel systems.		
HUMP	SLIPSTREAM pad in contoured closed cell non absorbent foam. Note: SLIPSTREAM pad may limit graphic sizing and availability on some suits and jackets.	190.00 EACH
HUMR	Add RADIO cavity to Hump. Includes hollowing out the Hump to contain the radio with earpiece wire pass-through in the front face of the hump. Order Hump separately. Radio not included.	20.00 XTRA
HUMV	SLIPSTREAM Hump enhanced with flow through ventilation system from the front of the Hump through airways into the back of the garment.	190.00 EACH
HUMW	Camel back reservoir holds about 8 fl. oz. of water. Water line is led inside to side of neck where velcro hangers support it. Order Hump separately.	130.00 XTRA
<b>TOTAL OPTIONS \$</b>		