

Vanson Road Racing Suit Guide



Quality...from Professionals...for Professionals!

Proudly made in Fall River, MA, U.S.A. from domestic and imported materials. Often copied, never equaled.

Industry Leading Patents

Over the years, we have developed new concepts for our riders, many have been patented. Here are a few of them...

- Ergonomic Fit
- Armor Systems
- Flow Through Ventilation
- Twin Front Zip

Currently **Vanson holds over 10 unique patents.**



Comfort + Innovation

- = **Confidence + Concentration**
- = **Safety + Speed**
- = **No Compromises**



Custom Racing Suits • Experience the best!

951 Broadway, Fall River, MA 02724

Phone (508) 678-2000 • Fax (508) 677-6773

E-Mail: vanson@vansonleathers.com

Web Site: www.vansonleathers.com

7 Easy Steps

- 1 - Pick Product;** select platform (style) to build.
- 2 - Order Options;** to enhance platform to suit your needs.
- 3 - Detail Design*;** Colors, Graphics, Stripes, Lettering & Logos. Use QR code to get to Measuring Guide.
- 4 - Add Accessories*;** Team Tee shirts, Balm, Gear bags, Tall + Chairs, Lanyards, CO₂ Cartridges, Airbag pulls, Bucket covers, Printed Garage jackets, Lanyards, Race gloves, Vbox to send, Etc.
- 5 - Make Measurements*;** Guaranteed fit, Fit assurance. Easy to use DIY form. Click QR code for Video on how to measure. Step by step directions. We check for a perfect outcome.
- 6 - Insure Investment*;** Buy Vanson's unique Asphalt Insurance. Use QR code for more information.
- 7 - Sign & Send* Order with deposit.**

*** Use the Suit Guide & Order Form in the Custom Measuring Guide to design, accessorize, insure and record your measurements to complete your order.**

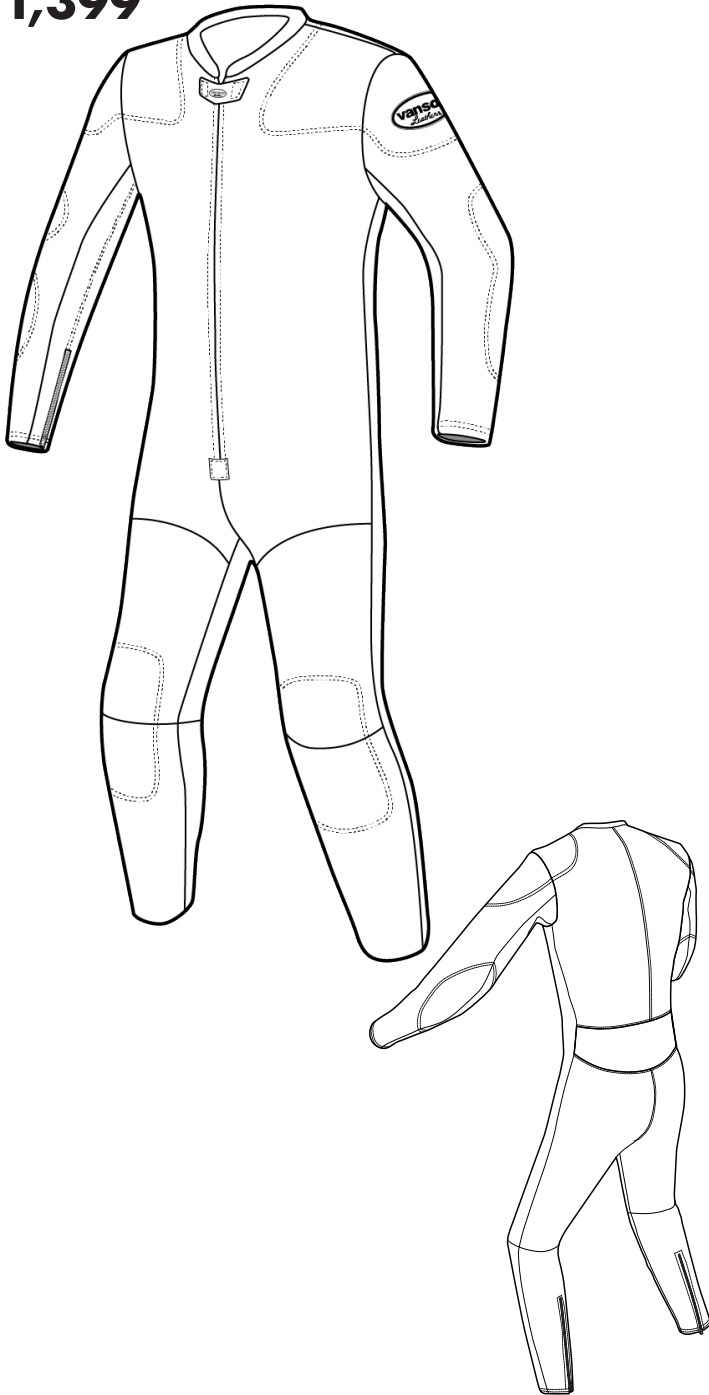
Free Consultations!!

Call if you have questions, we are here to help. Or if you would like us to help guide you step by step through the Measurement Process, give us a call to set up an appointment for a Zoom or similar meeting.

Traditional Non-Armored

RR1 Mark 1 Traditional One Piece

Custom Single Zip
One Piece Suit
starting from
\$1,399

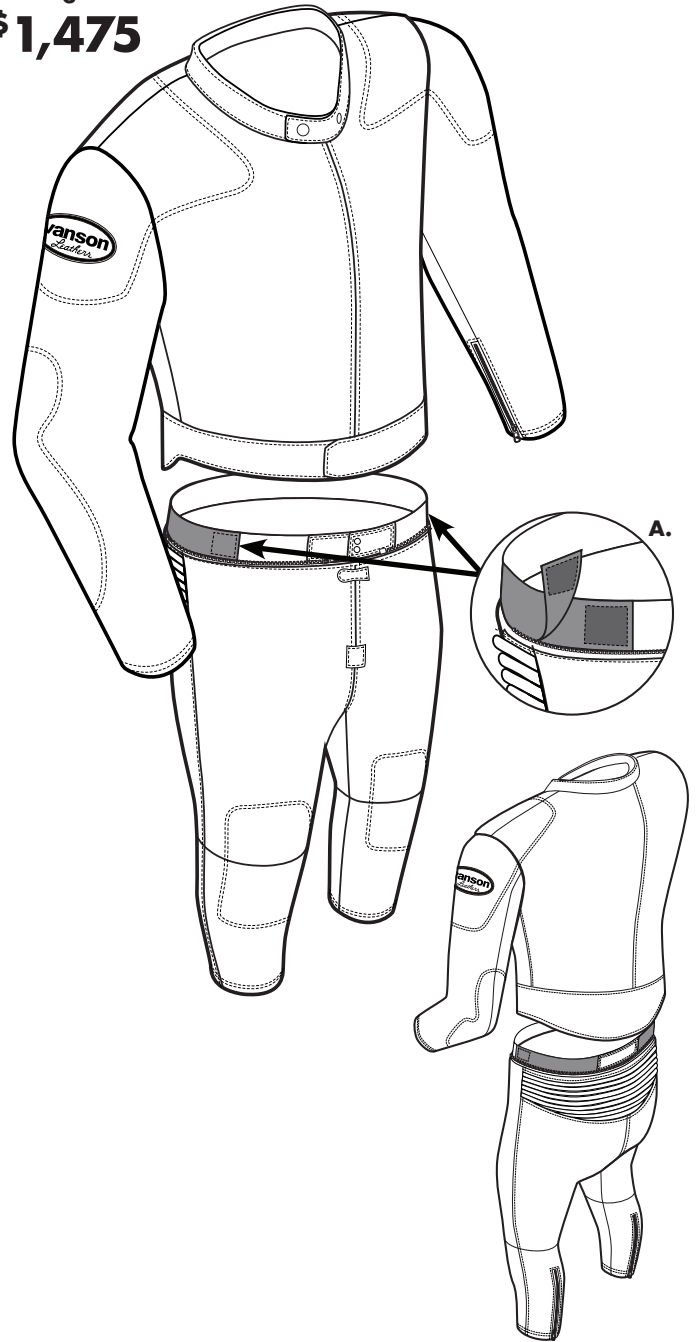


RR1 We are still providing the suits that were used when no one cared about frills and CE ratings. This suit does the job of a classic suit better than any classic suit. It has extra leather sewn inside at the collarbone, shoulder, elbow, forearm, and knees. The wrists and ankles have a "raw edge" finish for a comfortable less bulky feel. The suit is made with 3-3.5 oz. top-grain leather for ultimate abrasion resistance.

- Leather expansion section at back for comfort and freedom of movement.
- Heavy duty front zipper with windflap and license pocket.
- Nylon mesh lining for comfort and ventilation.

RR2 Mark 1 Traditional Two Piece

Custom Single Zip
Two Piece Suit
starting from
\$1,475



RR2 This is our traditional two piece suit, a retro cut and fit with the best leather manufacturing techniques. A waistband with velcro fastening conceals the waist's zipper. We've put extra leather in all of abrasion prone areas. We've also cut the back of the jacket low to keep out the wind as you cruise through the chicanes.

A. Expanding Waist - Expandable waist with adjustable elastic strap with velcro to give you a perfect fit when pants are not attached to jacket

- Back of jacket cut low to help keep the wind out.
- Elastic around top of pants and snaps at front for fit.
- Waistband with Velcro® fastening at front conceals waist zipper.
- The two piece version of the high quality traditional suit gives great versatility.
- Extra leather sewn inside at the shoulder/collarbone and knees.
- Leg zippers at rear of calf. Raw edge finish at ankles for less bulk.

Select Options Road Race (RR1, RR2 / Non-Armored)

#	Description of option	Price \$
VENTING SYSTEMS AND VENT OPTIONS		
Select venting systems from our collection of patented vent systems for perfect Air-Conditioning all year.		
19	Zip Vents - Rear, at sides, under arms as exit vents	30.00 PAIR
19A	Zip Vents - on front show locations on diagram	40.00 PAIR
COLLAR DETAILS		
15A	Mandarin style collar with snap-back tab	25.00 EACH
22	Bound collar - CIRCLE: LEATHER or SPANDEX	25.00 EACH
22A	Velcro security tab across top of front zipper	20.00 EACH
22B	Nehru collar - open at center front	32.00 EACH
33	Mandarin collar with velcro foldback and closure	35.00 EACH
EPAULET / BELTS / SUSPENDER OPTIONS		
40A	Suspender buttons - set to waistband of pants - four sets of two buttons each to attach suspenders #40S	25.00 SET
40S	Suspenders - also sold separately - X elastic pattern Four flat leather ends - with 2 Button-Holes each end.	65.00 EACH
JACKET WAISTBAND OPTIONS		
40B	Delete jacket waistband	N/C
42C	Add full circumference solid CORDURA waistband to jacket. Can be made straight or slightly dipped in the back. Front overlap is secured by either velcro or snaps. Circle below STRAIGHT BACK DIPPED BACK VELCRO SNAP	40.00 EACH
2 PIECE SUIT JACKET TO PANTS CONNECTION OPTIONS		
Join a jacket and pants together to make a 2 piece suit. Change waist connection details.		
42O2	Change waist zipper pull direction from Right-to-Left around torso to Left-to-Right for Left-handed riders.	10.00 XTRA
WRIST DETAILS		
Wrist details are very important to achieving the perfect fit with as little bulk as possible.		
11	Velcro security tabs over the zip pull at wrist and/or ankle zippers. CIRCLE: WRIST ANKLE	20.00 PAIR
14C	Wrist zippers at outseam (under the sleeve) Note: Outseam zippers are old style and may conflict with elbow armor. Wrist gussets included. Old school 1950's style.	15.00 PAIR
14G	Knit cuffs - option used in Dirt Track Suits + Fire Suits CIRCLE: FIRE-SUIT OTHER-SUIT	25.00 PAIR
40L	'D' Ring - Left Wrist - for kill switch cord	10.00 EACH
40R	'D' Ring - Right Wrist - for kill switch cord	10.00 EACH
LINING OPTIONS		
Lining options flagged as EACH are for full lining options in addition to the standard linings that come with garment.		
17	Rayon lining	N/C
17C	Replacement Nylon Mesh Lining. Linings attach at wrist and ankles. 1 piece suits only. Remove to wash or change. Suit replacement/spare	60.00 EACH
17G	Replacement Rayon Lining. Linings attach at wrist and ankle. 1 piece suits only. Remove to wash or change. Rayon is suggested for cooler weather to help block wind.	60.00 EACH
17H	Replacement CoolMax Lining. Linings are attached at wrist and ankles. 1 piece suits only. Remove to wash or change. CoolMax is suggested for hot humid weather to help when perspiration wicking is desired.	60.00 EACH
17X	No lining at all - raw leather interior of shell	40.00 XTRA
CARL	Single layer CARBONX lining instead of standard lining. Carbonx liners give heat and flame protection.	100.00 XTRA
MAND	Customer Name - Build-Date - Unit-No.: Printed on leather patch and sewn to lining	25.00 EACH
INSIDE POCKET OPTIONS		
Pockets set to lining - horizontally		
6A	Inside open top pocket set into lining, right side	20.00 EACH
6B	Inside open top pocket set into lining, left side	20.00 EACH
6D	Inside applied leather patch pocket CIRCLE: LEFT or RIGHT	25.00 EACH
PERFORATIONS ADDED TO SOLID PANELS FOR EXTRA VENTILATION		
These are larger holes, die cut, farther apart than PROperf. This allows the perforation of an otherwise solid leather panel. This is good for areas that need a little extra air flow.		
20A	PERFORATIONS - front - on body under arms	20.00 PAIR
20D	PERFORATIONS - entire upper front chest to waist	60.00 PAIR
20E	PERFORATIONS - waist to crotch - front	35.00 PAIR
20F	PERFORATIONS - on body, behind side seam at under arm area	20.00 PAIR
46	PERFORATIONS - band across upper front chest - arm to arm	35.00 EACH
46A	PERFORATIONS - at bicep - top sleeves - next to inseam	20.00 PAIR
46B	PERFORATIONS - on inner thighs - top legs - along inseam	20.00 PAIR
46C	PERFORATIONS - on back of jacket, along side seams	20.00 PAIR
46D	PERFORATIONS - on rear at side seams - shoulder to waist	35.00 PAIR

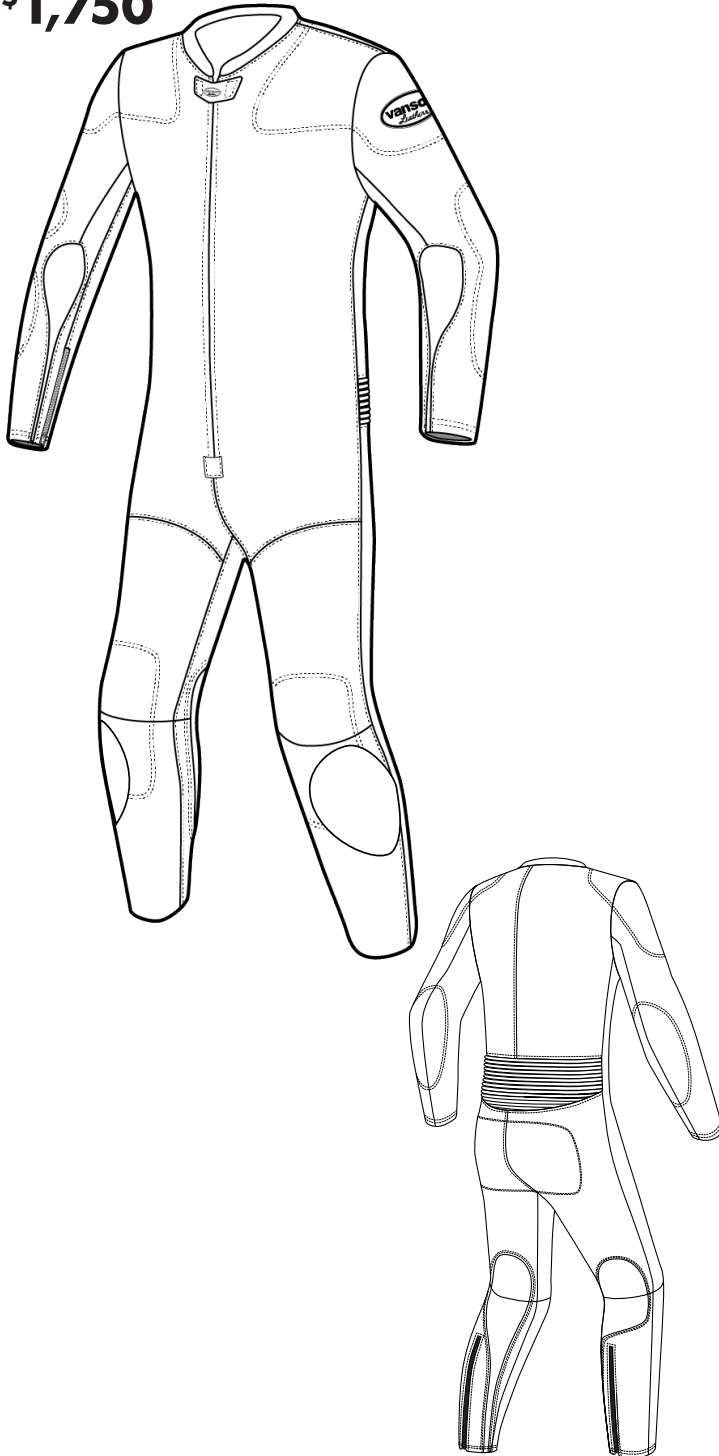
#	Description of option	Price \$
PROperf LEATHER - CHANGE AREAS + PANELS to PROperf		
PROperf leather is leather that has been machine perforated with small diameter holes spaced closely together. This allows maximum air flow into the garment. PROperf leather is also softer and more flexible as a result of perforating		
20Q	PROperf upper leg front, thigh seam to knee expander	35.00 XTRA
20R	PROperf thigh seam to end of knee expander - front legs	35.00 XTRA
20T	PROperf back of leg, calf from knee to ankle	15.00 XTRA
20X	PROperf lower front leg - from knee to ankle	20.00 XTRA
20Y	PROperf knee expanders	20.00 XTRA
20Z	PROperf back expander - allows ventilation and flexibility	20.00 XTRA
46E	PROperf under sleeve panels	20.00 XTRA
46P	PROperf fronts shoulder to thigh seam - (1 piece suit)	35.00 XTRA
46PJ	PROperf fronts shoulder to waistband - (jackets + suits)	25.00 XTRA
46PP	PROperf front legs waist to knee seam	20.00 XTRA
EMBROIDERED LOGO + SPONSOR PATCHES		
Personalize your suit with special patches.		
23	Velcro sewn in square on back to accept #24 (Leather Patch) Square Size approx. 12 in wide x 12 in high (velcro pile) Old School. Vintage.	25.00 EACH
24	Square of leather with strips of velcro to mate up with #23 Square Size approx. 12 in Wide x 12 in High. (Velcro hook) Specify color, price does not include letters & numbers.	30.00 EACH
26	Sewing on Sponsor Patch(es) provided by customer covered in clear plastic to help keep patch clean. Cost is per patch. Sewing on patch - no cover	10.00 EACH
26B	Chenille VANSON patch - Classic script with flowing "V"	8.00 EACH
26C	Patches are handmade and are approx 13 in to 15 in long x 8 in high	60.00 EACH
26D	VANSON STAR - two color approximately 1/2 in outline Approximate sizes CIRCLE: 15.5 in Wide x 13.75 in High 13 in Wide x 11.75 in High - 10.75 in Wide x 10 in High	49.00 EACH
26E	RED, WHITE and BLUE - U.S. FLAG Patch - Embroidered by Vanson. Placed on shoulders - always set with star field facing forward. Show location in section 4.	20.00 EACH
26F	BLACK/GREY - First Responder - U.S. FLAG Patch Embroidered by Vanson. Placed on shoulders - always set with star field facing forward. Show location in section 4.	20.00 EACH
26P	U.S. Flag - leather patch (approx. 12 in x 8 in) 100% leather flag with full 50 star field sewn to back	89.00 EACH
26R	Leather crossed VICTORY checkered flags - sewn on back	85.00 EACH
26S	Leather VICTORY checkered flag - small for chest/shoulder/glove	60.00 EACH
26T	Reflective VANSON Oval (rubber Oval) Specify location and number in section 4.	N/C
26TA	VANSON Competition Oval(s) (vinyl) Specify location and number in section 4.	N/C
26TE	Standard Cloth Embroidered VANSON Oval Specify location and number in section 4.	N/C
26TL	Leather embroidered VANSON Oval - specify colors Specify location and number in section 4.	25.00 ACH
26TP	Printed Vanson oval-specify colors	25.00 EACH
26V	VANSON V in a circle - vintage Vanson logo from 1974 Circle is 3.25 in in diameter. Used for chest and shoulders	25.00 EACH
26VV	VANSON V - vintage Vanson logo from 1974 V is 1.50 in Wide x 2.25 in High. Used on chest and shoulders.	20.00 EACH
DVO	Delete VANSON Ovals	100.00
VANSON LOGO LETTERING		
Traditional Vanson logos developed for competition leathers		
10	VANSON extra logo-chargeable - show locations in section 4.	15.00 EACH
10BA	Sized to fit - VANSON - across butt of suit or pants.	15.00 EACH
10BB	Sized to fit - VANSON - across lower back.	15.00 EACH
10BC	Small VANSON embroidered on both ends of collar.	N/C
10BF	Small VANSON stitched to top sleeves along forearm	PAIR
10BS	Small VANSON letters stitched to under sleeves	PAIR
10BT	Sized to fit - Vanson - stitched to thighs.	30.00 PAIR
10BV	Small VANSON stitched around lower knee puck velcro field	PAIR
10F	Sponsor Credit for placing additional "VANSON" on garment"	-30.00 N/C
DIGITAL PRINTING		
Digital Printing directly to garment shell: leather or textile.		
9B02	2 inch PRINTED LETTERS/NUMBER 2 COLORS	11.00 EACH
9B03	3 inch PRINTED LETTERS/NUMBERS 2 COLORS	13.00 EACH
9B2	2 inch PRINTED LETTERS/NUMBERS ONE COLOR	7.00 EACH
9B3	3 inch PRINTED LETTERS/NUMBERS-SINGLE COLOR	8.00 EACH
9B8	8 inch PRINTED LETTERS/NUMBERS ONE COLOR	10.00 EACH
9BG2	2 inch PRINTED LETTERS/NUMBERS 2 COLORS-SHADOWED-SLOPING OUTLINE-SLOPING SHADOWED	11.00 EACH
9BG3	3 inch PRINTED LETTERS/NUMBER 2 COLORS-SHADOWED-SLOPING OUTLINE-SLOPING SHADOW	13.00 EACH
9BG8	8 inch PRINTED LETTERS/NUMBER 2 COLORS-SHADOWED-SLOPING OUTLINE-SLOPING SHADOWED	17.00 EACH
9B08	8 inch PRINTED LETTERS/NUMBERS 2 COLORS	17.00 EACH
9BS2	2 inch PRINTED LETTERS/NUMBERS ONE COLOR/SLOPING	7.00 EACH
9BS3	3 inch PRINTED LETTERS/NUMBERS ONE COLOR/SLOPING	8.00 EACH
9BS8	8 inch PRINTED LETTERS/NUMBERS ONE COLOR/SLOPING	10.00 EACH
TOTAL RR1/RR2 OPTIONS \$		

Traditional Armored

RR12 MARK 2 One Piece

Custom Single Zip
One Piece Suit
starting from

\$1,750



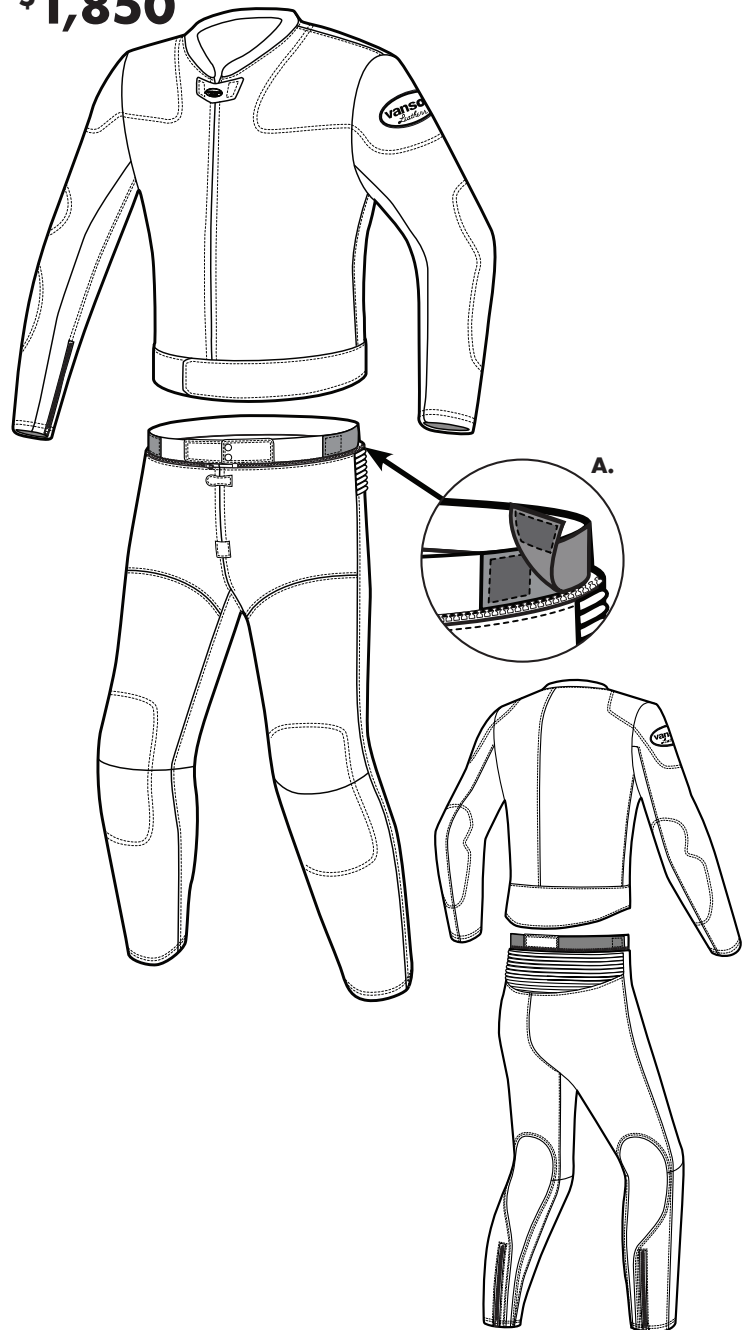
RR12 With all of the same top quality materials as our RR1 with our most popular options, including GP2 F.A.S. Armor which is in all of the impact prone areas. Our Powerstretch material is strategically placed in major pump and flex points to make sure circulation and flexibility is always on tap. This is a great road racing suit that won't make you look like a futuristic football player racing on a beautiful classic bike.

- **GP2 F.A.S. Armor™**
- **POWERSTRETCH™**
- **Velcro®** area for knee sliders (pucks are not standard).

RR22 MARK 2 Two Piece

Custom Single Zip
Two Piece Suit
starting from

\$1,850



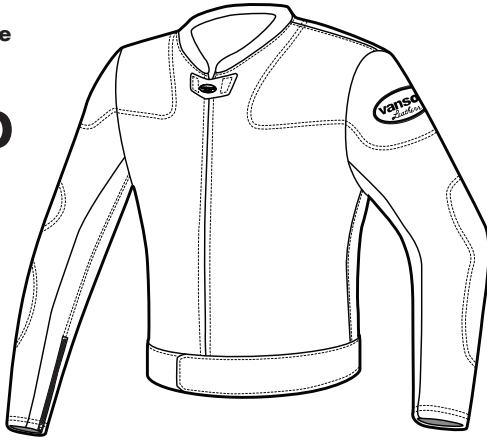
RR22 This suit gives you the ease of a two piece, the looks of a classic suit, and the protection of a fully armored suit. What's better than that? That's right, nothing.

A. Expanding Waist - Expandable waist with adjustable elastic strap with velcro to give you a perfect fit when pants are not attached to jacket

- Same standard features as Traditional 2 piece suit plus the listed additional features.
- **GP2 F.A.S. Armor™**
- **POWERSTRETCH™** keyhole shaped sections from back of knee to ankle for comfort in the tuck position.
- Includes:
 - Elbow/Forearm
 - Shoulder
 - Knees
 - Back pad
 - Closed cell foam hip pads
 - *Smaller size suits can not accept GP2 armor. CE approved armor will be substituted.

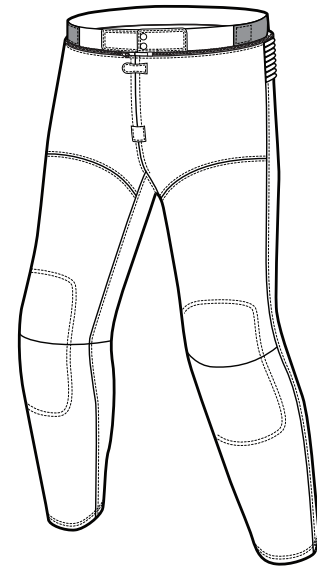
RR2T

Custom Single Zip Jacket starting from **\$1,050**



DR2B

Custom Pants starting from **\$995**



Select Options Road Race (RR12, RR22, DR2B, RR2T / Armored)

#	Description of option	Price \$
GP2 DIRECT-CONNECT CE ARMOR SYSTEM		
CE ARMOR is attached to the outside of closed cell pads. Direct-Connect Velcro holds the Armor + Pad in position. Shaped closed-cell pads keep the armor from shifting and serve to help absorb impact energy.		
GP21	GP2 CE Level 2 Shoulder armor	65.00 PAIR
GP22	GP2 CE Level 2 Elbow armor	69.00 PAIR
GP23	GP2 CE Level 2 Knee armor	65.00 PAIR
GP31	SHAPED GP2 PAD + D3O GHOST CE Level 2 Shoulder armor	69.00 PAIR
GP32	SHAPED GP2 PAD + D3O GHOST CL Level 2 Elbow armor	69.00 PAIR
GP33	SHAPED GP2 PAD + D3O GHOST CE Level 2 Knee armor	69.00 PAIR
GP35	SHAPED GP2 PAD + D3O GHOST CE Level 2 Hip armor	59.00 PAIR
G.P. FLOATING HARD-ARMOR OPTIONS		
F.A.S. (Floating Armor System) is the Vanson patented armor attachment system that allows the armor and garment to have limited slip which improves safety and comfort.		
GP11	GP F.A.S. Hard shoulder armor + shaped pad	69.00 PAIR
GP12	GP F.A.S. Hard elbow armor	79.00 PAIR
GP13	GP F.A.S. Hard knee armor	69.00 PAIR
DIRECT-CONNECT CE ARMOR SYSTEM		
DIRECT-CONNECT ARMOR - CE rated armor is connected directly to the shell with discrete velcro fields.		
CEG1	Direct-Connect D3O GHOST CE Level 2 Shoulder armor	69.00 PAIR
CEG2	Direct-Connect D3O GHOST CE Level 2 Elbow armor	69.00 PAIR
CEG3	Direct-Connect D3O GHOST CE Level 2 Knee armor	69.00 PAIR
CEG5	Direct-Connect D3O GHOST CE Level 2 Hip armor	69.00 PAIR
BACK-PADS		
BACKPADS used for Protection along spine.		
PRO4	Articulated scale back pad - F.A.S. attachment to lining	129.00 EACH
INSIDE CLOSED CELL PADDING		
Classic inside padding is closed cell foam backed with mesh or leather. Closed cell foam does not absorb moisture. Several closed cell applications have been superseded by either GP Armor or CE Armor options.		
1A	Elbow Padding - inside Oval football shape N/A w/armor	25.00 PAIR
1B	Knee Padding - inside Oval shape N/A w/armor	25.00 PAIR
1C	Spine Padding - inside - approx. 6 in wide N/A w/armor	40.00
1H	Chest Padding - inside - Dirt Track	60.00 EACH
1I	Bicep Padding - inside - Dirt Track	30.00 PAIR
1J	Shin Padding - inside - Dirt Track	30.00 PAIR
1S	Shoulder Padding - inside - closed cell N/A w/armor	30.00 PAIR
3	Hip Padding - inside sewn at hip area N/A w/armor	40.00 PAIR
INSIDE LEATHER PATCH - DOUBLE LEATHER PROTECTION		
4	Full Double seat, inside pants	35.00
4A	Inside leather elbow patches - football shape	30.00 PAIR
4B	Inside leather knee patches	30.00 PAIR
4D	Inside leather elbow/forearm (kidney shape) patches	40.00 PAIR
Wrist zippers must be along inseam as patch interferes		
4E	Inside leather shoulder patches	30.00 PAIR

#	Description of option	Price \$
VENTING SYSTEMS AND VENT OPTIONS		
Select venting systems from our collection of patented vent systems for perfect Air-Conditioning all year.		
19	Zip Vents - Rear, at sides, under arms as exit vents	30.00 PAIR
19A	Zip Vents - on front show locations on diagram	40.00 PAIR
COLLAR DETAILS		
15A	Mandarin style collar with snap-back tab	25.00 EACH
22	Bound collar - CIRCLE: LEATHER or SPANDEX	25.00 EACH
22A	Velcro security tab across top of front zipper	20.00 EACH
22B	Nehru collar - open at center front	32.00 EACH
33	Mandarin collar with velcro foldback and closure	35.00 EACH
EPAULET / BELTS / SUSPENDER OPTIONS		
40A	Suspender buttons - set to waistband of pants - four sets of two buttons each to attach suspenders #40S	25.00 SET
SUSP	Suspenders - also sold separately - X elastic pattern Four flat leather ends - with 2 Button-Holes each end.	65.00 EACH
JACKET WAISTBAND OPTIONS		
40B	Change pattern to delete jacket waistband	20.00 EACH
42C	Add full circumference solid CORDURA waistband to jacket. Can be made straight or slightly dipped in the back. Front overlap is secured by either velcro or snaps. Circle below STRAIGHT BACK DIPPED BACK VELCRO SNAP	40.00 EACH
2 PIECE SUIT JACKET TO PANTS CONNECTION OPTIONS		
Join a jacket and pants together to make a 2 piece suit. Change waist connection details.		
42O2	Change waist zipper pull direction from Right-to-Left around torso to Left-to-Right for Left-handed riders.	10.00 XTRA
WRIST DETAILS		
Wrist details are very important to achieving the perfect fit with as little bulk as possible.		
1I	Velcro security tabs over the zip pull at wrist and/or ankle zippers. CIRCLE: WRIST ANKLE	20.00 PAIR
14C	Wrist zippers at outseam (under the sleeve) Note: Outseam zippers are old style and may conflict with elbow armor. Wrist gussets included. Old school 1950's style.	15.00 PAIR
14G	Knit cuffs - option used in Dirt Track Suits + Fire Suits	25.00 PAIR
40L	'D' Ring - Left Wrist - for kill switch cord	10.00 EACH
40R	'D' Ring - Right Wrist - for kill switch cord	10.00 EACH
PUCKS / KNEE SLIDERS		
2I	Tear-off leather patch to cover knee puck velcro field cover matches suit graphics - includes velcro field Order with 21A and 21B	40.00 PAIR
21A	Knee Pucks with Velcro field	79.00 PAIR
21B	Velcro fields for knee pucks (velcro only)	40.00 PAIR
21C	Replacement Pucks only. Price per pair	49.00 PAIR
21D	Sidecar passenger seat or shoulder velcro patch with slider Show placement in design section. Price for each location.	75.00 EACH

RR12, RR22, RR2T, DR2B Options - Continued on next page

Select Options Road Race (RR12, RR22, DR2B, RR2T / Armored) - continued

#	Description of option	Price \$	
LINING OPTIONS			
Lining options flagged as EACH are for full lining options in addition to the standard linings that come with garment.			
17	Rayon lining	N/C	
17C	Replacement Nylon Mesh Lining. Linings attach at wrist and ankles. 1 piece suits only. Remove to wash or change. Suit replacement/spare	60.00	EACH
17G	Replacement Rayon Lining. Linings attach at wrist and ankle. 1 piece suits only. Remove to wash or change. Rayon is suggested for cooler weather to help block wind.	60.00	EACH
17H	Replacement CoolMax Lining. Linings are attached at wrist and ankles. 1 piece suits only. Remove to wash or change. CoolMax is suggested for hot humid weather to help when perspiration wicking is desired.	60.00	EACH
17X	No lining at all - raw leather interior of shell	40.00	XTRA
CARL	Single layer CARBONX lining instead of standard lining. Carbonx liners give heat and flame protection.	100.00	XTRA
MAND	Customer Name - Build-Date - Unit-No.: Printed on leather patch and sewn to lining	25.00	EACH
INSIDE POCKET OPTIONS			
Pockets set to lining - horizontally			
6A	Inside open top pocket set into lining, right side	20.00	EACH
6B	Inside open top pocket set into lining, left side	20.00	EACH
6D	Inside applied leather patch pocket CIRCLE: LEFT or RIGHT	25.00	EACH
PERFORATIONS ADDED TO SOLID PANELS FOR EXTRA VENTILATION			
These are larger holes, die cut, farther apart than PROperf. This allows the perforation of an otherwise solid leather panel. This is good for areas that need a little extra air flow.			
20A	PERFORATIONS - front - on body under arms	20.00	PAIR
20D	PERFORATIONS - entire upper front chest to waist	60.00	PAIR
20E	PERFORATIONS - waist to crotch - front	35.00	PAIR
20F	PERFORATIONS - on body, behind side seam at under arm area	20.00	PAIR
46	PERFORATIONS - band across upper front chest - arm to arm	35.00	EACH
46A	PERFORATIONS - at bicep - top sleeves - next to inseam	20.00	PAIR
46B	PERFORATIONS - on inner thighs - top legs - along inseam	20.00	PAIR
46C	PERFORATIONS - on back of jacket, along side seams	20.00	PAIR
46D	PERFORATIONS - on rear at side seams - shoulder to waist	35.00	PAIR
PROperf LEATHER - CHANGE AREAS + PANELS to PROperf			
PROperf leather is leather that has been machine perforated with small diameter holes spaced closely together. This allows maximum air flow into the garment. PROperf leather is also softer and more flexible as a result of perforating			
20Q	PROperf upper leg front, thigh seam to knee expander	35.00	XTRA
20R	PROperf thigh seam to end of knee expander - front legs	35.00	XTRA
20T	PROperf back of leg, calf from knee to ankle	15.00	XTRA
20X	PROperf lower front leg - from knee to ankle	20.00	XTRA
20Y	PROperf knee expanders	20.00	XTRA
20Z	PROperf back expander - allows ventilation and flexibility	20.00	XTRA
46E	PROperf under sleeve panels	20.00	XTRA
46P	PROperf fronts shoulder to thigh seam - (1 piece suit)	35.00	XTRA
46PJ	PROperf fronts shoulder to waistband - (jackets + suits)	25.00	XTRA
46PP	PROperf front legs waist to knee seam	20.00	XTRA
EXPANDER PANEL OPTIONS			
Expander panels are generally made using PROperf leather or Medium weight Firenze leather to make the expander sections as soft, comfortable and flexible as possible.			
44	Expansion panels added above knees CIRCLE: HEAVY-MESH(check tech for ok) SOLID-LEATHER PROperf	40.00	PAIR

#	Description of option	Price \$	
EMBROIDERED LOGO + SPONSOR PATCHES			
Personalize your suit with special patches.			
23	Velcro sewn in square on back to accept #24 (Leather Patch) Square Size approx. 12 in wide x 12 in high (velcro pile) Old School. Vintage.	25.00	EACH
24	Square of leather with strips of velcro to mate up with #23 Square Size approx. 12 in Wide x 12 in High.(Velcro hook) Specify color, price does not include letters & numbers.	30.00	EACH
26	Sewing on Sponsor Patch(es) provided by customer covered in clear plastic to help keep patch clean. Cost is per patch.	10.00	EACH
26B	Sewing on patch - no cover	8.00	EACH
26C	Chenille VANSON patch - Classic script with flowing "V" Patches are handmade and are approx 13 in to 15 in long x 8 in high	60.00	EACH
26D	VANSON STAR - two color approximately 1/2 in outline Approximate sizes CIRCLE: 15.5 in Wide x 13.75 in High 13 in Wide x 11.75 in High - 10.75 in Wide x 10 in High	49.00	EACH
26E	RED, WHITE and BLUE - U.S. FLAG Patch - Embroidered by Vanson. Placed on shoulders - always set with star field facing forward. Show location in section 4.	20.00	EACH
26F	BLACK/GREY - First Responder - U.S. FLAG Patch Embroidered by Vanson. Placed on shoulders - always set with star field facing forward. Show location in section 4.	20.00	EACH
26P	U.S. Flag - leather patch (approx. 12 in x 8 in) 100% leather flag with full 50 star field sewn to back	89.00	EACH
26R	Leather crossed VICTORY checkered flags - sewn on back	85.00	EACH
26S	Leather VICTORY checkered flag - small for chest/shoulder/glove	60.00	EACH
26T	Reflective VANSON Oval (rubber Oval) Specify location and number in section 4.	N/C	
26TA	VANSON Competition Oval(s) (vinyl) Specify location and number in section 4.	N/C	
26TE	Standard Cloth Embroidered VANSON Oval Specify location and number in section 4.	N/C	
26TL	Leather embroidered VANSON Oval - specify colors	25.00	ACH
26TL	Specify location and number in section 4.		
26TP	printed Vanson ovlas-specify colors	25.00	EACH
26V	VANSON V in a circle - vintage Vanson logo from 1974	25.00	EACH
26V	Circle is 3.25 in in diameter. Used for chest and shoulders		
26VV	VANSON V - vintage Vanson logo from 1974	20.00	EACH
26VV	V is 1.50 in Wide x 2.25 in High. Used on chest and shoulders.		
DVO	Delete VANSON Ovals	100.00	
VANSON LOGO LETTERING			
raditional Vanson logos developed for competition leathers			
10	VANSON extra logo-chargeable - show locations in section 4.	15.00	EACH
10BA	Sized to fit - VANSON - across butt of suit or pants.	15.00	EACH
10BB	Sized to fit - VANSON - across lower back.	15.00	EACH
10BC	Small VANSON embroidered on both ends of collar.	STD	
10BF	Small VANSON stitched to top sleeves along forearm	15.00	PAIR
10BS	Small VANSON letters stitched to under sleeves	15.00	PAIR
10BT	Sized to fit - Vanson - stitched to thighs.	30.00	PAIR
10BV	Small VANSON stitched around lower knee puck velcro field	30.00	PAIR
10F	Sponsor Credit for placing additional "VANSON" on garment"	-30.00	N/C

RR12, RR22




DR2B or RR2T

TOTAL OPTIONS \$

Notes

Vanson Suit Tree:

(#) Designates 2 piece suits - all with full circumference waist zipper
 *Ready made Suits not available as a custom order. Call for more information.

	Custom	Off-the-Rack
MK4 suits (with armor) <i>Professional Road Racing, side car</i>	 V094 double front zipper suit VE94 VL94 V942 (#) ladies available	
Drag Race <i>Drag Racing, Snowmobile Racing</i>	DR1 ladies available DR2 (#) DRL2 (2#) DR2B DR2T	Drag (#)* (sizes 34-54)
Dirt Track <i>Dirtr Track Racing</i>	DT2 (#) DTL2 (2#)	Drag (#)* (sizes 34-54)
Super Motard (with armor) <i>Super Motard Racing, Dirt Tracking, Vintage Road Racing</i>	 SM02 ladies available SM22 (#) ladies available	1 piece only (sizes 34-54)
Traditional (extra leather) <i>Vintage Road Racing, Long Boarding, Dirt Tracking</i>	RR1 ladies available RR2 ladies available	
MK2 suits with armor <i>Road Racing, Dirt Tracking, Long Boarding, Side car Racing</i>	RR12 ladies available RR22(#) ladies available	
Street & Track <i>Track Days, Sport Riding</i>	STRC (#) ladies available	
HYBRID - suit with Hump and CE F.A.S. armor Not Available in Custom	HYB1*	(sizes 34 54)
HYBRID - suit with Hump, CE F.A.S. armor and AirPro Airbag Not Available in Custom	 HYBA* AirPro Airbag is standard with this suit Trigger assembly located in the hump	(sizes 34 54)
Garage Suit <i>General Wrenching, Everyday Riding</i>	VNV6 ladies Available VNV6	(sizes 34 54)
Car Suit <i>Professional Car Racing, Kart Racing</i>	FD01, FD05 - Double-Zip FS01, FS05 - Single-Zip FP01, FP05 - Pants (sizes 34 54) FJ01, FJ05 - Jacket	



AirPro - airbag option

All suits marked with this icon can have our AirPro airbag added to your order.

PRODUCT DISCLAIMERS



CALIFORNIA PROP65 WARNING: This product can expose you to chemicals, substances and materials known to the State of California to cause cancer and birth defects or other reproductive harm.

ADVERTENCIA: Este producto puede exponerle a productos quimicos, substancias y materiales que el estado de California reconoce como causantes de cancer y defectos de nacimiento u otros danos reproductivos.



VANSON RACING SUIT DISCLAIMER - Motorcycle sports are inherently dangerous and involve the risk of serious injury or death. Riders using these products ride at their own risk with full knowledge of the hazards and risks associated with their activities. Racing suits cannot offer complete protection from injury or death to riders. Racing suits cannot protect areas of the body that are not covered and offer no protection against injuries involving forces other than impact. CAUTION: Body Protectors (Vanson GP F.A.S. armor and CE approved armor) must fit properly and be securely fastened. Racing suit components that are damaged should be destroyed and replaced.



VANSON'S AIR-PRO AIRBAG SUIT DISCLAIMER - Motorcycle sports are inherently dangerous and involve the risk of serious injury or death. Riders using these products ride at their own risk with full knowledge of the hazards and risks associated with their activities. AirBag suits cannot protect areas of the body that are not covered and offer no protection against injuries involving forces other than impact. CAUTION: Body Protectors (Vanson GP F.A.S. armor and CE approved armor) must fit properly and be securely fastened. AirBag components that are damaged should be destroyed and replaced. The protective properties of AirBag suits may be compromised by prior impact, age, and other substances.



VANSON MOTORCYCLE ARMOR DISCLAIMER - Motorcycle Sports are inherently dangerous and involve the risk of serious injury or death. Riders using these products ride at their own risk with full knowledge of the hazards and risks associated with their activities. Armor cannot offer complete protection from injury or death to riders. Motorcycle Armor cannot protect areas of the body that are not covered and offer no protection against injuries involving forces other than impact. CAUTION: Body Armor Protectors (Vanson GP F.A.S. Armor and CE approved Armor) must fit properly and be securely fastened. Armor components that are damaged should be destroyed and replaced.

Top 12 Reasons to Buy a Vanson

1 - Pride of Ownership

When you get a handmade Vanson custom suit you are joining a very exclusive worldwide club. These suits are heirloom quality, and given basic proper care will give decades of service.

2 - Express Yourself Through the Creation of a Beautiful and Unique Suit

Any graphic - you (we can help you) design it, we will make it. Or look at our design pages for inspiration. Note: subject to design/construction limitations of the basic garment we are making for you.

3 - Value

Get Back Up and Get Going – our suits are NOT crash and replace. Mike Martire has over 60 crashes on his suit; Brian “Crash” Kent over 40. Korry Hogan came off at 248 mph. Just before the finish line and slid 600 feet. Chris Hand got blown off his drag bike at 228 mph. Dale Quarterly lost it at full speed on the Daytona High Banks when his Ducati transmission locked up – 165 mph creating a 400 foot slide. Eric Wood at Homestead came off at 160 mph, and ran back to the pits to relaunch on his back-up bike.

4 - Strength + Protection

Race after race, year after year. Some of our oldest suits are still racing. Made from the strongest leathers, and the innovative and unique patented design features – such as the F.A.S. (Floating Armor System), Double Front Zipper racing suits, Powerstretch Aramid textile panels, RAM Air Sleeve vents, Air Curtain ventilation systems – Vanson continuously works to produce the best at the front of the pack. Take a look at Eric Guilbranson’s Crash101 video (on web homepage) on why and how the Vanson suits protect.

5 - Handmade with pride in our workshop in Fall River, Mass, USA.

The Vanson team has over 38 years experience of making dreams come true. We make and finish our own leather. We make our own Aramid textile – which we call Powerstretch. Every Vanson is designed, engineered, cut and produced in the U.S.A. of imported and domestic materials.

6 - Ownership Registry

All repairs, patterns and alterations are archived to enable us to repair and or reproduce each individual garment. We have tracked lost and stolen Vansons for their owners and the police.

7 - Reconditioning Service

We will clean and bathe Vanson leathers using the same ph balanced oils and waxes used in the original tanning and finishing of the leathers.

8 - Aftercare

We will alter, repair and maintain Vanson leathers whatever the age and condition so long as the finished product is deemed “safe” by us.

9 - Unique Designs & Patents

Double Zipper Front, Floating Armor, Air Bag, ? (optional), Fire-Proof Linings available

10 - Guaranteed Fit

Once measurements have been approved by us, we have the information we need to be able to guarantee the fit for a custom motorcycle jacket, pants or suit. No worries – see our measurement video and pages – or call us, we can help.

11 - Any Size

We will make to fit.

12 - Asphalt Insurance

Take a spill and you’ve got asphalt insurance you’re covered! **Who else does that for their customer?**



Custom Racing Suits • Experience the best!

951 Broadway, Fall River, MA 02724

Phone (508) 678-2000 • Fax (508) 677-6773

E-Mail: vanson@vansonleathers.com • Web Site: www.vansonleathers.com